

1 POWER, TELEPHONE & DATA COMMON GANG WALL OUTLETS
E-01
SCALE: N.T.S.

NOTES RE. VOICE/DATA SYSTEM

- VOICE AND DATA AT RENOVATED AREA SHALL BE PROVIDED BY OWNER. THIS ELECTRICAL CONTRACTOR SHALL PROVIDE THE FOLLOWING:
1. TELEPHONE OUTLET SHALL BE SINGLE GANG BOX C/W 3/4" TO ZONE CONDUIT.
 2. DATA OUTLET SHALL BE SINGLE BOX C/W 3/4" TO ZONE CONDUIT.
 3. COMBINATION TELEPHONE/DATA OUTLET SHALL BE SINGLE GANG C/W 3/4" TO ZONE CONDUIT.
 4. ALL CONDUITS SHALL BE C/W PULL STRING.
 5. PROVIDE ZONE CONDUIT/BOXES FOR VOICE AND DATA CABLING.
 6. ONLY FT-6 FIRE RATED CABLES SHALL BE USED IN CEILING RETURN AIR PLENUMS.
 7. LOCATION AND QUANTITY OF OUTLETS ARE SHOWN ON FLOOR PLAN.

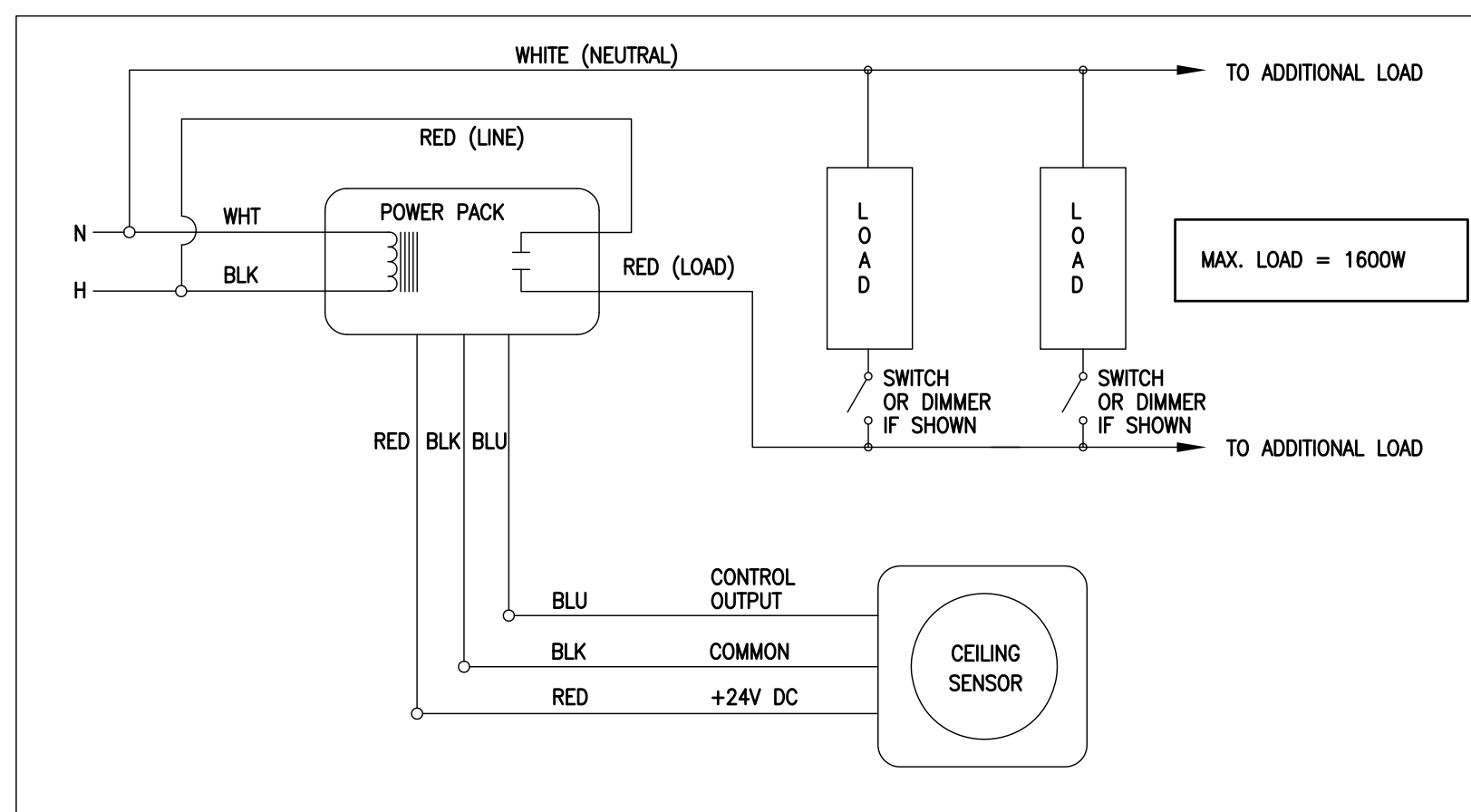
EMERGENCY BATTERY UNIT SPECIFICATIONS

REMOTE HEADS DC-1
1. SINGLE REMOTE HEADS SHALL BE MR16 LED 24V, DC 6W, EMERGENCY LIGHTING. REMOTE HEADS SHALL BE WHITE EMERG-LITE CAT. # EFR SERIES OR APPROVED EQUAL.

EXIT SIGN 'X'
RECESSED CEILING MOUNTED SINGLE FACE OR DOUBLE FACE AS PER DRAWING. SHOULD BE 1 HR RATED LIFE UNIVERSAL MOUNTED LED SIGN, GREEN METAL BODY WITH RUNNING MAN, 2W MR16 LED LAMPS, 120VAC & 12VDC INPUT.
MANUFACTURE: BEGHELLI GUIDA SERIES CAT.# GD-RM SERIES OR APPROVED EQUAL.

OCCUPANCY SENSOR SCHEDULE

- OS-1** SURFACE CEILING MOUNTED DUAL TECHNOLOGY OCCUPANCY SENSOR, ROOM SENSORS.
- LIP TO 1000 SQ.FT. COVERAGE.
- SENSITIVITY ADJUSTMENT.
- ADJUSTABLE TIME DELAY BETWEEN 1 SECONDS TO 30 MINUTES.
- 5 YEAR WARRANTY.
ARROWS INDICATE ORIENTATION OF TRANSMITTERS.
WAIT-STOPPER CAT.# LMDC-100 SERIES.



2 CEILING MOUNTED SINGLE CIRCUIT & SINGLE SENSOR OCCUPANCY SENSOR CONTROL WIRING DIAGRAM
E-01

LUMINAIRE SCHEDULE

- (FIXTURE SUPPLIED BY S & C AND INSTALLED BY THE ELEC.CONTRACTOR)
- TYPE T1**
LED TRACK MOUNTED CROSS BAFFLED ACCENT LIGHT WITH INTEGRAL DIMMER (0-10%).
FINISH: WHITE PAINT FINISH
LAMP: 20' SPOT, 2700 LUMENS, 3500K, LED
VOLTAGE: 120V DRIVER & REQUIRED ACCESSORIES.
MANUFACTURER: EDISON PRICE LIGHTING CAT.# IDM LX XTM OX 2C 200 WH L27S 35K SERIES OR APPROVED EQUAL.
- TYPE R1**
4" SQUARE LED DOWN LIGHT WITH DIMMABLE TO 1% BY 0-10V DIMMER AND 60° INITIAL BEAM SPREAD.
FINISH: WHITE PAINT FINISH
LAMP: 2100 LUMENS, 3500K, LED
VOLTAGE: 120V DRIVER & REQUIRED ACCESSORIES.
MANUFACTURER: EDISON PRICE LIGHTING CAT.# P4 XTM DL DMV L215-W60D SERIES OR APPROVED EQUAL.
- TYPE T5A**
LED TRACK MOUNTED ACCENT LIGHT WITH INTEGRAL ROTARY DIMMER (0-10%).
FINISH: WHITE PAINT FINISH
LAMP: 60" WIDE FLOOD, 2700 LUMENS, 3500K, LED
VOLTAGE: 120V DRIVER & REQUIRED ACCESSORIES.
MANUFACTURER: EDISON PRICE LIGHTING CAT.# IDM LX XTM OX 2C 60D WH L27S 35K SERIES OR APPROVED EQUAL.
- TYPE TW**
LED TRACK MOUNTED ACCENT LIGHT WITH INTEGRAL ROTARY DIMMER (0-10%).
FINISH: WHITE PAINT FINISH
LAMP: 2100 LUMENS, 3500K, LED
VOLTAGE: 120V DRIVER & REQUIRED ACCESSORIES.
MANUFACTURER: EDISON PRICE LIGHTING CAT.# IDM LX XTM W 2C WH L215 35K SERIES OR APPROVED EQUAL.
- TYPE T4**
LED TRACK WALL WASHER POWERED BY FOUR CITIZEN CHIP ON-VISOR LINEAR LED ARRAYS PROVIDING WHITE LIGHT WITH 3 STEP M-A-D-M ELLIPSES.
FINISH: WHITE PAINT FINISH
LAMP: 2000 LUMENS, 3500K, 80 CRI LED
VOLTAGE: 120V DRIVER & REQUIRED ACCESSORIES.
MANUFACTURER: EDISON PRICE LIGHTING CAT.# STK CZR 2C WH L20 835 SERIES OR APPROVED EQUAL.
- TYPE D2**
3" APERTURE HIGH EFFICIENCY LED ACCENT LIGHT WITH INTERNAL TWIST & LOCK REFLECTOR, DIMMABLE TO 1% BY 0-10V DIMMER AND 36° INITIAL BEAM SPREAD. SEMI-SPECULAR CLEAR EXTERNAL REFLECTOR.
FINISH: WHITE PAINT FINISH
LAMP: 1800 LUMENS, 3500K, 80 CRI LED
VOLTAGE: 120V DRIVER & REQUIRED ACCESSORIES.
MANUFACTURER: EDISON PRICE LIGHTING CAT.# THR XTM AA 37 D L16S SERIES OR APPROVED EQUAL.

NOTES RE. LOW VOLTAGE LIGHTING CONTROL

ELECTRICAL CONTRACTOR SHALL SUPPLY AND INSTALL ALL LIGHTING FIXTURE DIMMING DEVICES TO SUIT CIRCUITS SHOWN ON THE PLAN. LIGHTING FIXTURE SUPPLIED BY CLIENT AND INSTALLED BY ELEC. CONTRACTOR.

DRAWING LIST

NUMBER	DRAWING NAME
E-01	ELECTRICAL LEGEND & DETAILS
E-02	ELECTRICAL DEMOLITION PLAN
E-03	ELECTRICAL NEW POWER PLAN
E-04	ELECTRICAL NEW LIGHTING PLAN
E-05	ELECTRICAL SPECIFICATION

LEGEND

- T1** FLUORESCENT LUMINAIRE, CEILING OR WALL MOUNTED RESPECTIVELY. LETTER DENOTES TYPE.
- X** CEILING OR WALL MOUNTED LUMINAIRE RESPECTIVELY. LETTER DENOTES TYPE.
- DC1** CEILING OR WALL MOUNTED ILLUMINATED EXIT SIGN RESPECTIVELY. SINGLE OR DOUBLE FACE AS INDICATED BY FILLED IN PORTION(S) WITH ARROW(S) AS INDICATED.
- DC1** SURFACE MOUNTED SINGLE OR DOUBLE EMERGENCY LIGHTING REMOTE HEAD. CEILING OR WALL MOUNTED AS SHOWN.
- DC1** EMERGENCY BATTERY NIT "DC1" C/W LIGHTING HEAD(S) AS SHOWN ON PLAN.
- S** SINGLE POLE LIGHT SWITCH(S), WITH ONE, TWO OR THREE-GANG COVERPLATE 15A, 347V UNLESS OTHERWISE NOTED.
- S3 S4 S3 S4** SWITCHES AS ABOVE. SUBSCRIPTS DENOTE 3-WAY OR 4-WAY. SEE ABBREVIATION FOR OTHER SUBSCRIPTS.
- OS1** OCCUPANCY SENSOR. NUMBER DENOTES TYPE. REFER TO SCHEDULE.
- 120V, 15A** DUPLEX U-GROUND RECEPTACLE UNLESS OTHERWISE NOTED.
- 120V, 15A** DUPLEX RECEPTACLE AS ABOVE, CSA 5-20A TYPE.
- II** SAME AS ABOVE EXCEPT CONNECT TO CONTROLLED CIRCUIT. RECEPTACLE SHALL BE GREY COLOUR.
- II** DOUBLE DUPLEX RECEPTACLE IN A COMMON COVER PLATE.
- 120V, 15A** SINGLE RECEPTACLE. VOLTAGE/AMPERAGE AND TYPE AS INDICATED.
- II** SPECIAL RECEPTACLE. VOLTAGE/AMPERAGE AND TYPE AS INDICATED.
- II** RECEPTACLES AS ABOVE BUT MOUNTED ABOVE COUNTER OR 42" AFF.
- II** RECEPTACLE AS ABOVE SUBSCRIPTS DENOTE SPECIAL TYPE AS PER ABBREVIATION LIST.
- IS** IS DENOTES ISOLATED GROUND RECEPTACLE WITH DEDICATED GROUND WIRE AND SEPARATE CIRCUIT NEUTRAL.
- FACP** FIRE ALARM SMOKE DETECTOR
- FACP** FIRE ALARM HEAT DETECTOR, COMBINATION FIXED TEMPERATURE AND RATE-OF-RISE.
- FACP** RECESSED OR SURFACE MOUNTED FIRE ALARM CONTROL PANEL/OR ANNUNCIATOR AS NOTED. FACP: FIRE ALARM CONTROL PANEL FACP: FIRE ALARM ANNUNCIATOR PANEL.
- PL** BREAKER. SIZE AS NOTED.
- PL** UNFUSED DISCONNECT SWITCH. SIZE TO SUIT OR AS NOTED. SEE ABBREVIATION FOR OTHER SUBSCRIPTS.
- PL** MOTOR AS INDICATED. INCLUDE FINAL CONNECTION.
- PL** 120V DIRECT CONNECTION FOR USE AS NOTED. INCLUDE FINAL CONNECTION. "PL" DENOTES FOR ELECTRIC PLUMBING FIXTURES.
- PL** SPECIAL DIRECT CONNECTION FOR USE AS NOTE. INCLUDE FINAL CONNECTION.
- PL** WALL MOUNTED FEED TO SYSTEM FURNITURE. POWER AND COMMUNICATIONS RESPECTIVELY. PROVIDE CONNECTION TO FURNITURE.
- PL** FLUSH OR SURFACE MOUNTED ELECTRICAL PANEL RESPECTIVELY.
- PL** ELECTRIC HEATER, BASEBOARD/FORCED-AIR RESPECTIVELY. TYPE AS INDICATED.
- PL** ELECTRIC HEATER DESCRIPTION. LETTER DENOTES TYPE. NUMBER DENOTES WATTAGE.
- PL** OUTLET FOR ASSISTANT CALL SYSTEM PULL CORD AND STAFF EMERGENCY PUSH BUTTON.
- PL** OUTLET FOR WALL OR CEILING MOUNTED AV SYSTEM SPEAKER.
- PL** TRANSIENT VOLTAGE SURGE SUPPRESSION.
- PL** PUSHBUTTON FOR DOOR.
- PL** TELEPHONE OUTLET. SEE RISER DIAGRAM FOR DETAIL.
- PL** DATA OUTLET. SEE RISER DIAGRAM FOR DETAIL.
- PL** COMBINATION TELEPHONE/DATA OUTLET. SEE RISER DIAGRAM FOR DETAIL.
- PL** OUTLET AS ABOVE BUT MOUNTED ABOVE COUNTER OR 42" AFF.
- PL** FLOOR MOUNTED TELEPHONE, DATA OR COMBINATION AS SPECIFIED.
- PL** DATA OUTLET. REFER TO SCOPE OF WORK.
- PL** PUSHBUTTON FOR USE AS NOTED.
- PL** SECURITY SYSTEM, DOOR CONTACT.
- PL** SECURITY SYSTEM, ELECTRIC STRIKE.
- PL** SECURITY SYSTEM, PANG BUTTON.
- PL** DETAIL #
- PL** DRAWING WHERE DETAIL IS SHOWN.
- WP** WEATHERPROOF.
- GF1** GROUND FAULT INTERRUPTER.
- A-1** PANEL "A", CIRCUIT #1.
- NEC** NOT IN THIS ELECTRICAL CONTRACT.
- HD** HAND DRYER.
- LP** LIGHTING PANEL.
- RP** RECEPTACLE PANEL.
- RL** RELAY PANEL.
- C** DENOTES CEILING.
- NL** DENOTES NIGHT LIGHT.

The contractor shall check all dimensions and other data from the job and report any discrepancies to the architect before proceeding. Do not scale drawing.

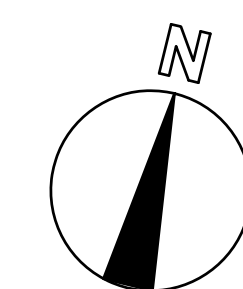
NO.	REVISIONS	DATE
3.	ISSUED FOR TENDER	JAN.10, 2017
2.	ISSUED FOR BUILDING PERMIT	DEC.01, 2016
1.	ISSUED FOR REVIEW	NOV.11, 2016

SHARMA & PARTNERS INC.
Mechanical and Electrical Engineers
85 Curlew Drive, Unit 108
Toronto, Ontario, M3A 2P8
(416) 291-8822
1-888-832-7160
SPI PROJECT # 2016-1076

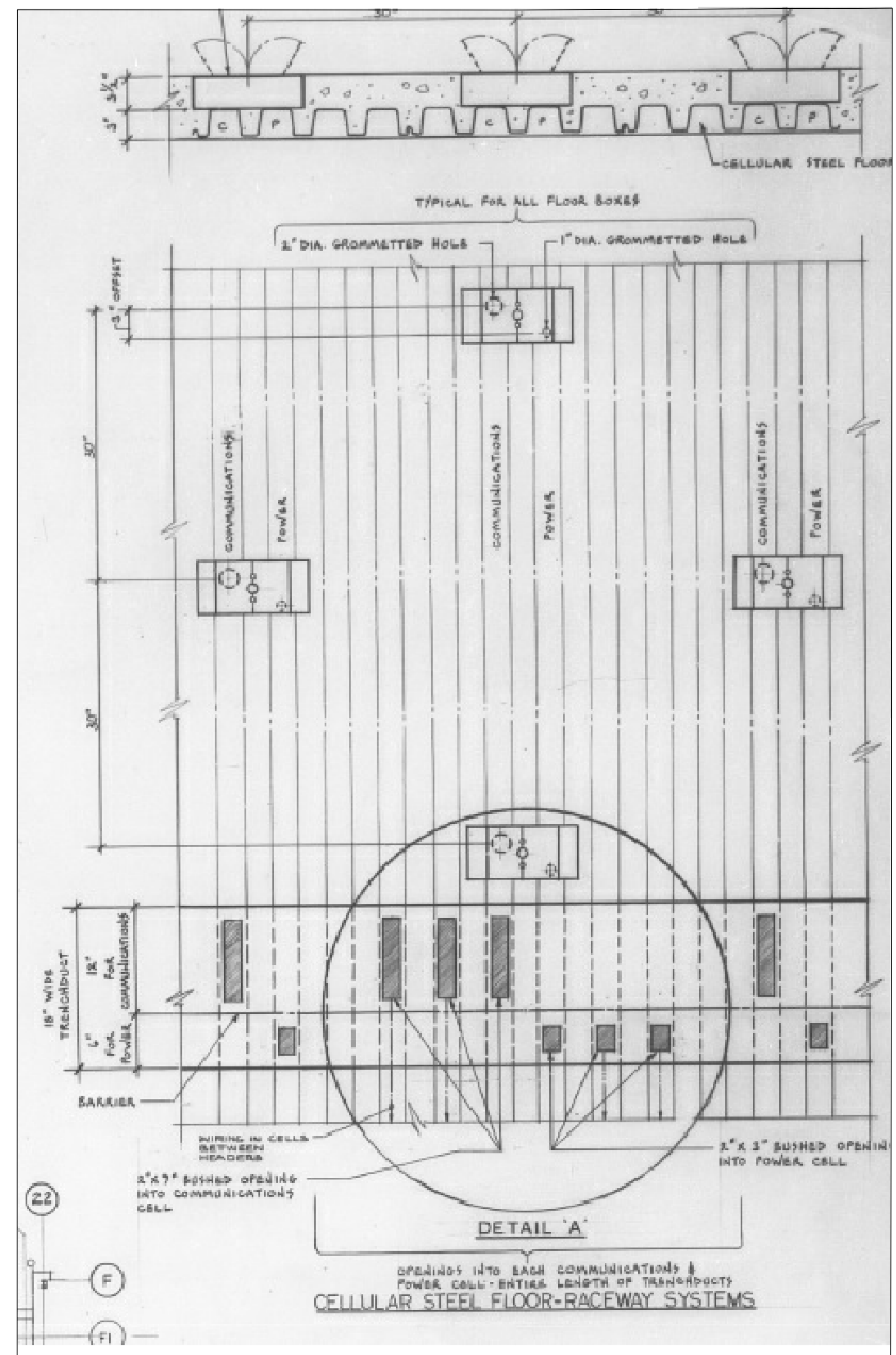
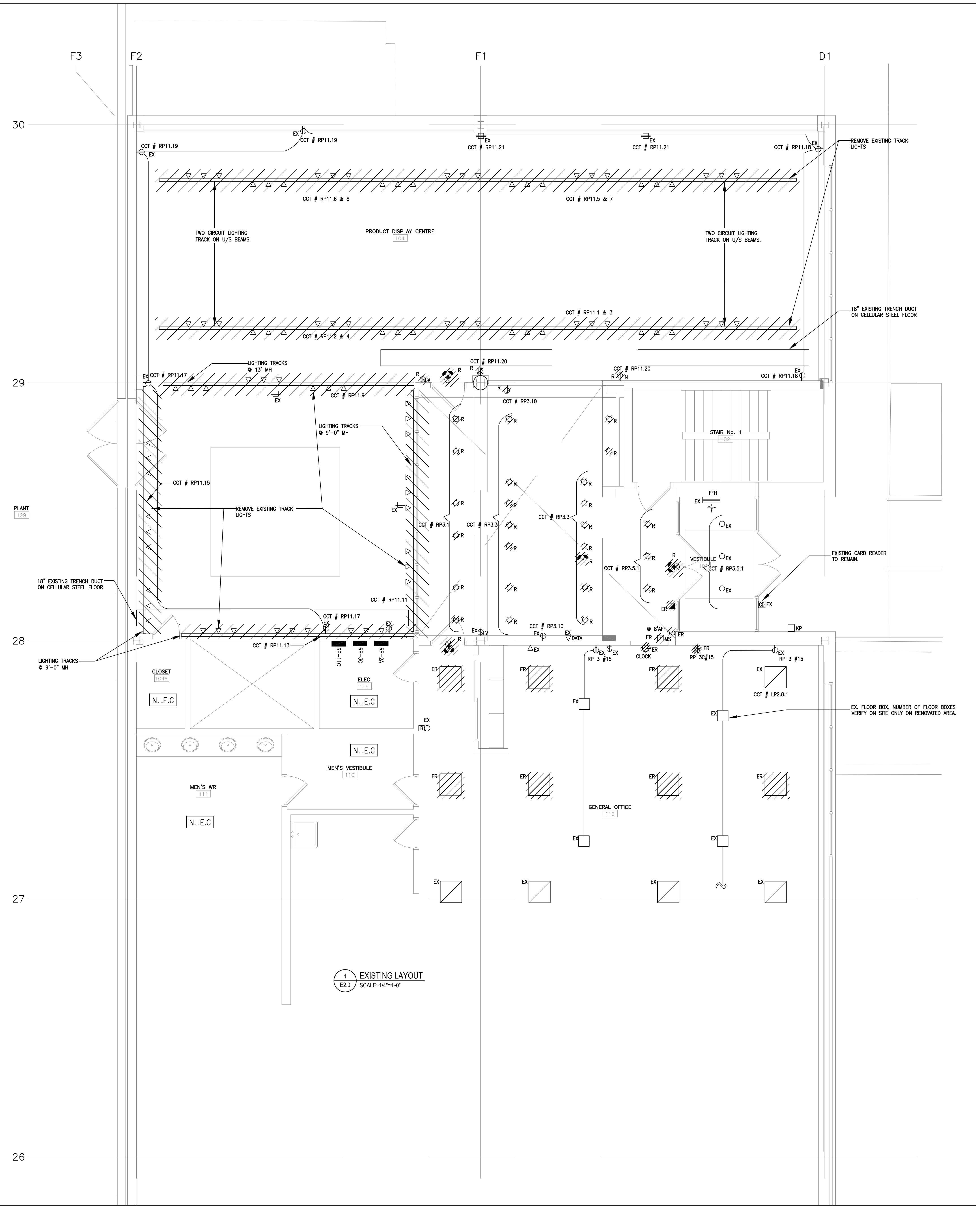


S&C ELECTRIC CANADA
Drawing Title
ELECTRICAL LEGEND, NOTES & DETAILS

Project Title
PRODUCT DISPLAY CENTRE, BLDG. 4 RENOVATION
90 BELFIELD ROAD TORONTO



Approved	KS	Checked	KS	Drawn By	
Scale	1/4"=1'-0"	Date	JAN., 2017	File No.	SPI# 2016-1076
Drawing Number	PDC-E-001		Revision Number		



2 EXISTING TRENCH DUCT DETAIL (REFERENCE ONLY)
SCALE: 1/4"=1'-0"

The contractor shall check all dimensions and other data from the job and report any discrepancies to the architect before proceeding. Do not scale drawing.

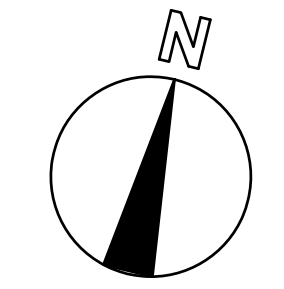
NO.	REVISIONS	DATE
3.	ISSUED FOR TENDER	JAN.10, 2017
2.	ISSUED FOR BUILDING PERMIT	DEC.01, 2016
1.	ISSUED FOR REVIEW	NOV.11, 2016

SHARMA & PARTNERS INC.
Mechanical and Electrical Engineers
85 Curlew Drive, Unit 108
Toronto, Ontario, M3A 2P8
(416) 291-8822
1-888-832-7160
SPI PROJECT # 2016-1076



S&C ELECTRIC CANADA
Drawing Title
DEMO PLAN & DETAILS

Project Title
PRODUCT DISPLAY CENTRE, BLDG. 4 RENOVATION
90 BELFIELD ROAD TORONTO

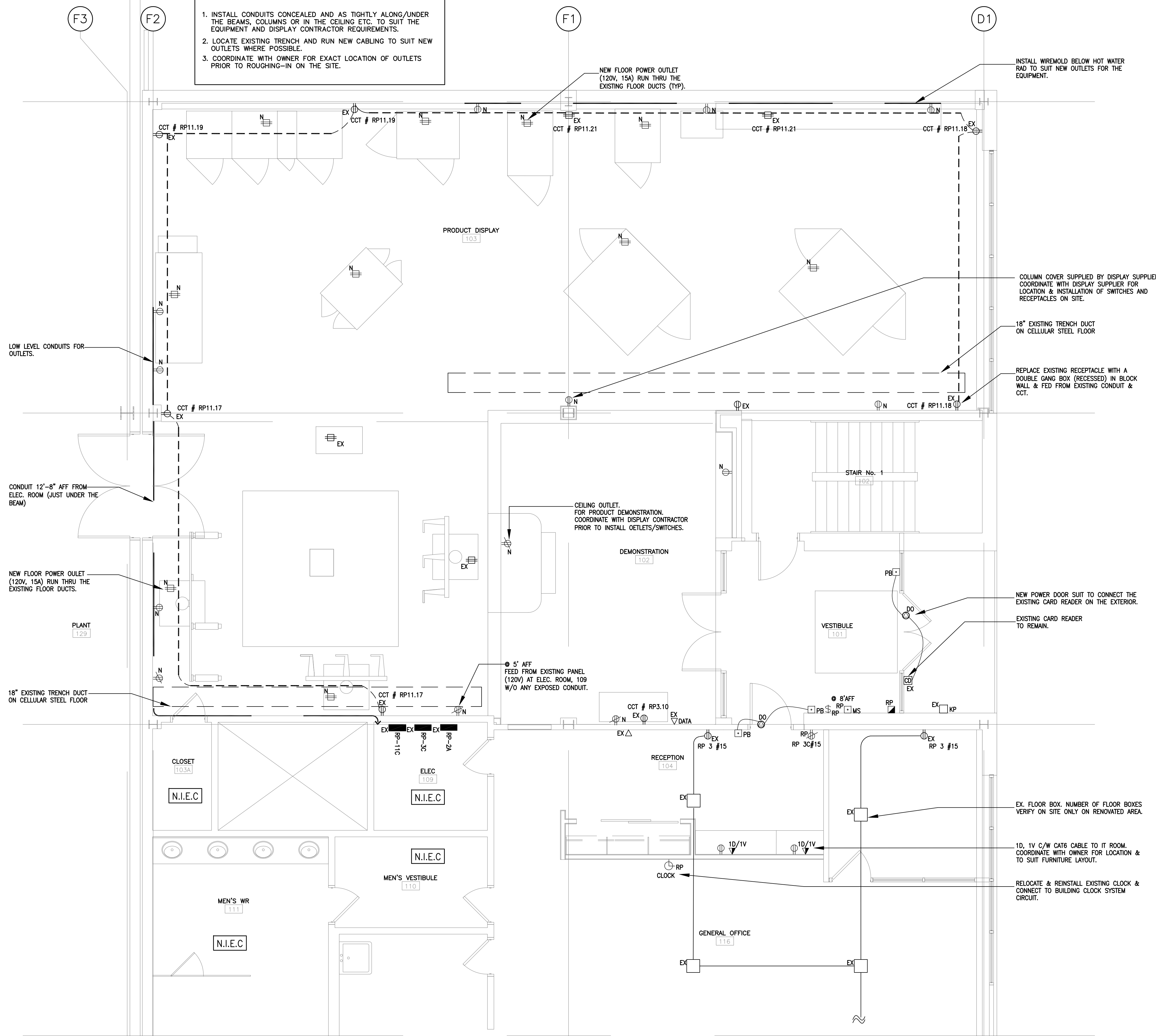


Approved	KS	Checked	KS	Drawn By	
Scale	1/4"=1'-0"	Date	JAN., 2017	File No.	SPI# 2016-1076
Drawing Number	PDC-E-002			Revision Number	

Computer File Number: _____ Copyright: 2016

NOTES

1. INSTALL CONDUITS CONCEALED AND AS TIGHTLY AS POSSIBLE ALONG/UNDER THE BEAMS, COLUMNS OR IN THE CEILING ETC. TO SUIT THE EQUIPMENT AND DISPLAY CONTRACTOR REQUIREMENTS.
2. LOCATE EXISTING TRENCH AND RUN NEW CABLING TO SUIT NEW OUTLETS WHERE POSSIBLE.
3. COORDINATE WITH OWNER FOR EXACT LOCATION OF OUTLETS PRIOR TO ROUGHING-IN ON THE SITE.



1 NEW POWER LAYOUT
E3.0 SCALE: 1/4"=1'-0"

The contractor shall check all dimensions and other data from the job and report any discrepancies to the architects before proceeding. Do not scale drawing.

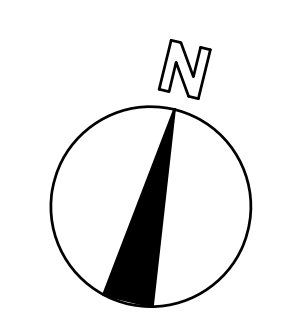
NO.	REVISIONS	DATE
3.	ISSUED FOR TENDER	JAN.10. 2017
2.	ISSUED FOR BUILDING PERMIT	DEC.01. 2016
1.	ISSUED FOR REVIEW	NOV.11. 2016

SHARMA & PARTNERS INC.
Mechanical and Electrical Engineers
85 Curlew Drive, Unit 108
Toronto, Ontario, M3A 2P8
(416) 291-8822
1-888-832-7160
SPI PROJECT # 2016-1076



S&C ELECTRIC CANADA
Drawing Title
ELECTRICAL NEW POWER PLAN

Project Title
PRODUCT DISPLAY CENTRE, BLDG. 4 RENOVATION
90 BELFIELD ROAD TORONTO



Approved	KS	Checked	KS	Drawn By	
Scale	1/4"=1'-0"	Date	JAN. 2017	File No.	SPI# 2016-1076
Drawing Number		Revision Number			

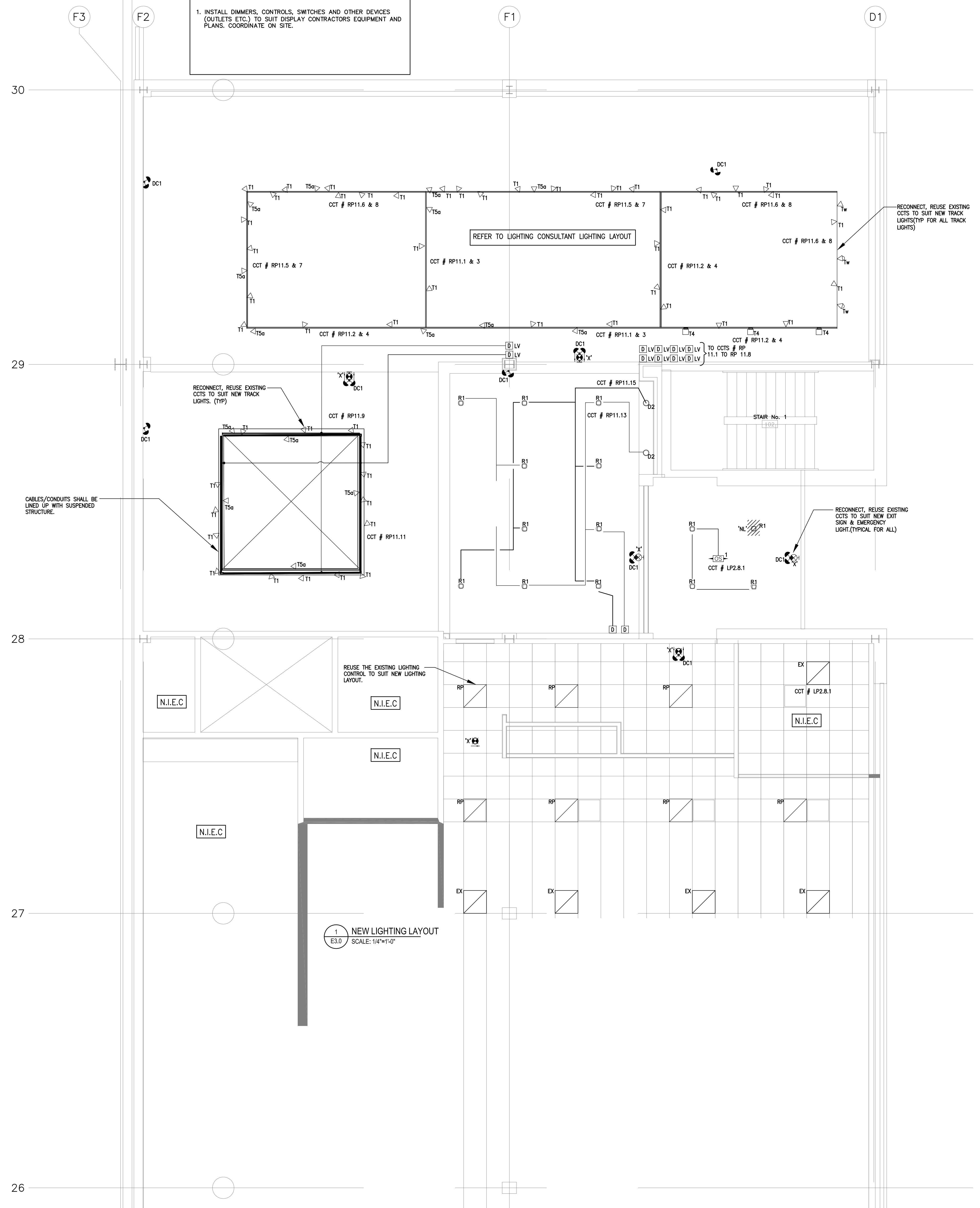
PDC-E-003

Computer File Number: _____ Copyright: 2016

The contractor shall check all dimensions and other data from the job and report any discrepancies to the architect before proceeding. Do not scale drawing.

3.	ISSUED FOR TENDER	JAN.10, 2017
2.	ISSUED FOR BUILDING PERMIT	DEC.01, 2016
1.	ISSUED FOR REVIEW	NOV.11, 2016
NO.	REVISIONS	DATE

NOTES
 1. INSTALL DIMMERS, CONTROLS, SWITCHES AND OTHER DEVICES (OUTLETS ETC.) TO SUIT DISPLAY CONTRACTORS EQUIPMENT AND PLANS. COORDINATE ON SITE.



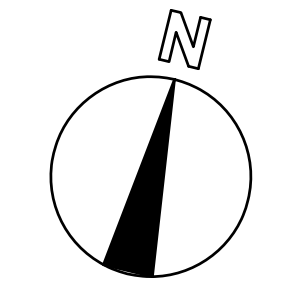
1 NEW LIGHTING LAYOUT
 E3.0 SCALE: 1/4"=1'-0"

SHARMA & PARTNERS INC.
 Mechanical and Electrical Engineers
 85 Curlew Drive, Unit 108
 Toronto, Ontario, M3A 2P8
 (416) 291-8822
 1-888-832-7160
 SPI PROJECT # 2016-1076



S&C ELECTRIC CANADA
 Drawing Title
ELECTRICAL NEW LIGHTING PLAN

Project Title
PRODUCT DISPLAY CENTRE, BLDG. 4 RENOVATION
 90 BELFIELD ROAD TORONTO



Approved	KS	Checked	KS	Drawn By	
Scale	1/4"=1'-0"	Date	JAN., 2017	File No.	SPI# 2016-1076
Drawing Number	PDC-E-004			Revision Number	
Computer File Number:				Copyright:	2016

