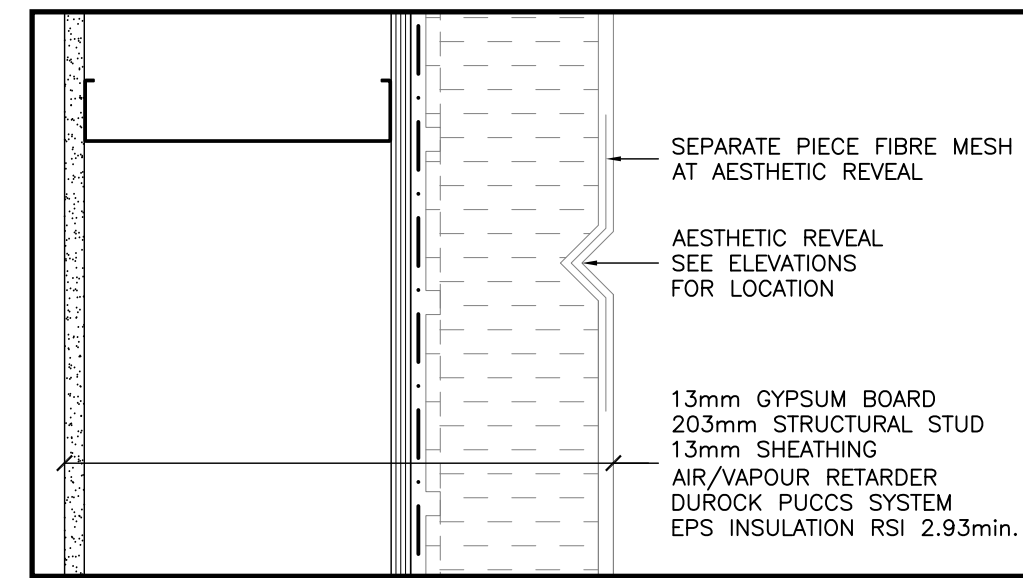
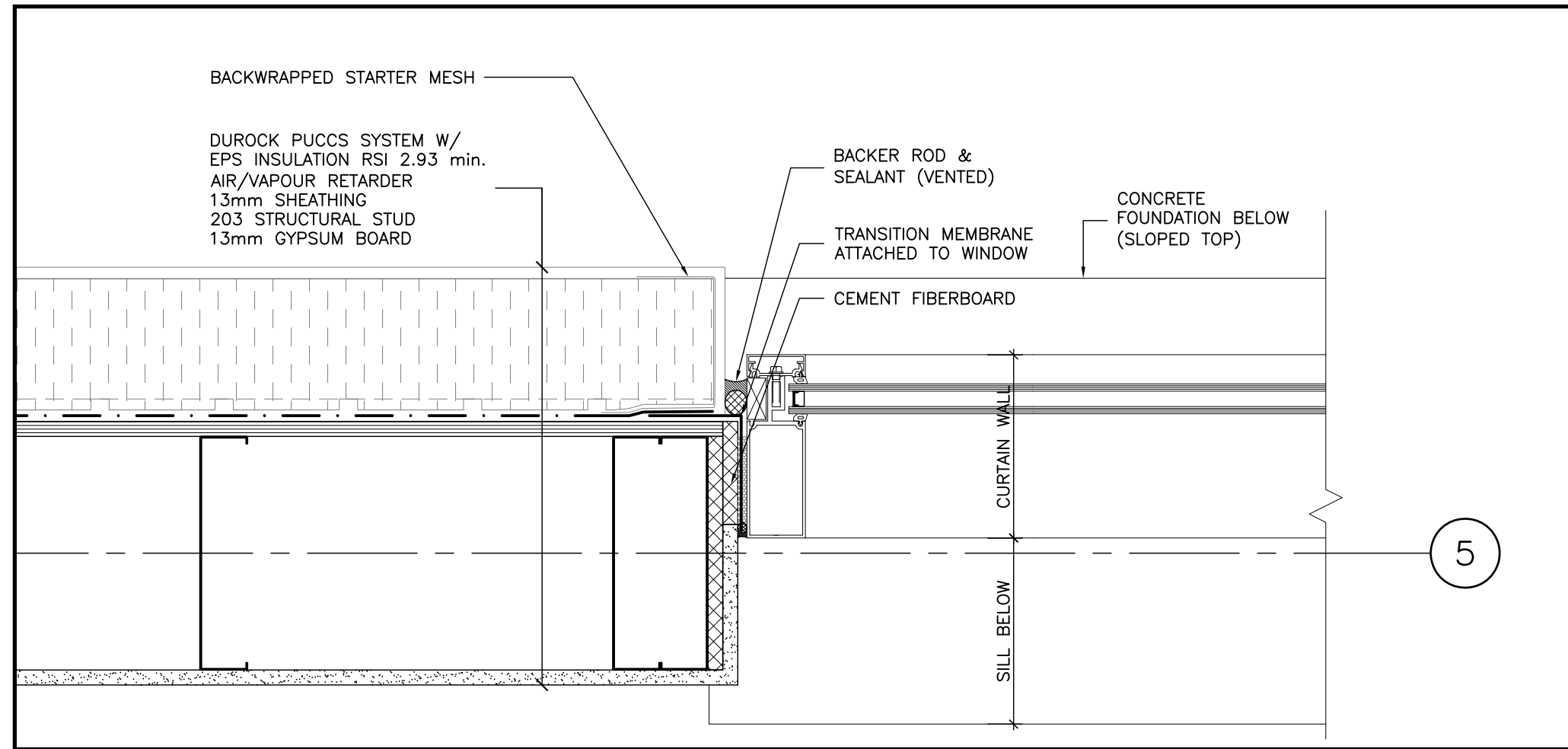


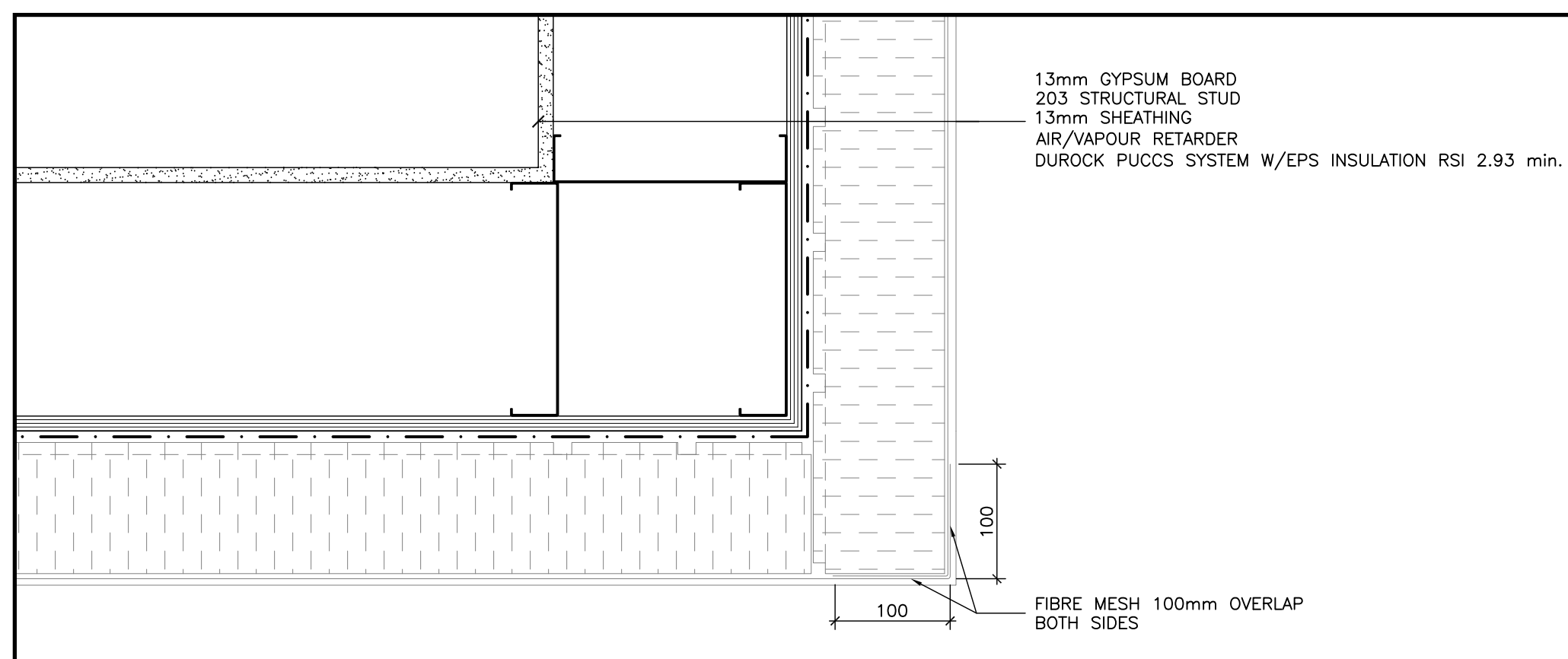
9 DETAIL-STUCCO EXPANSION JOINT  
1:5



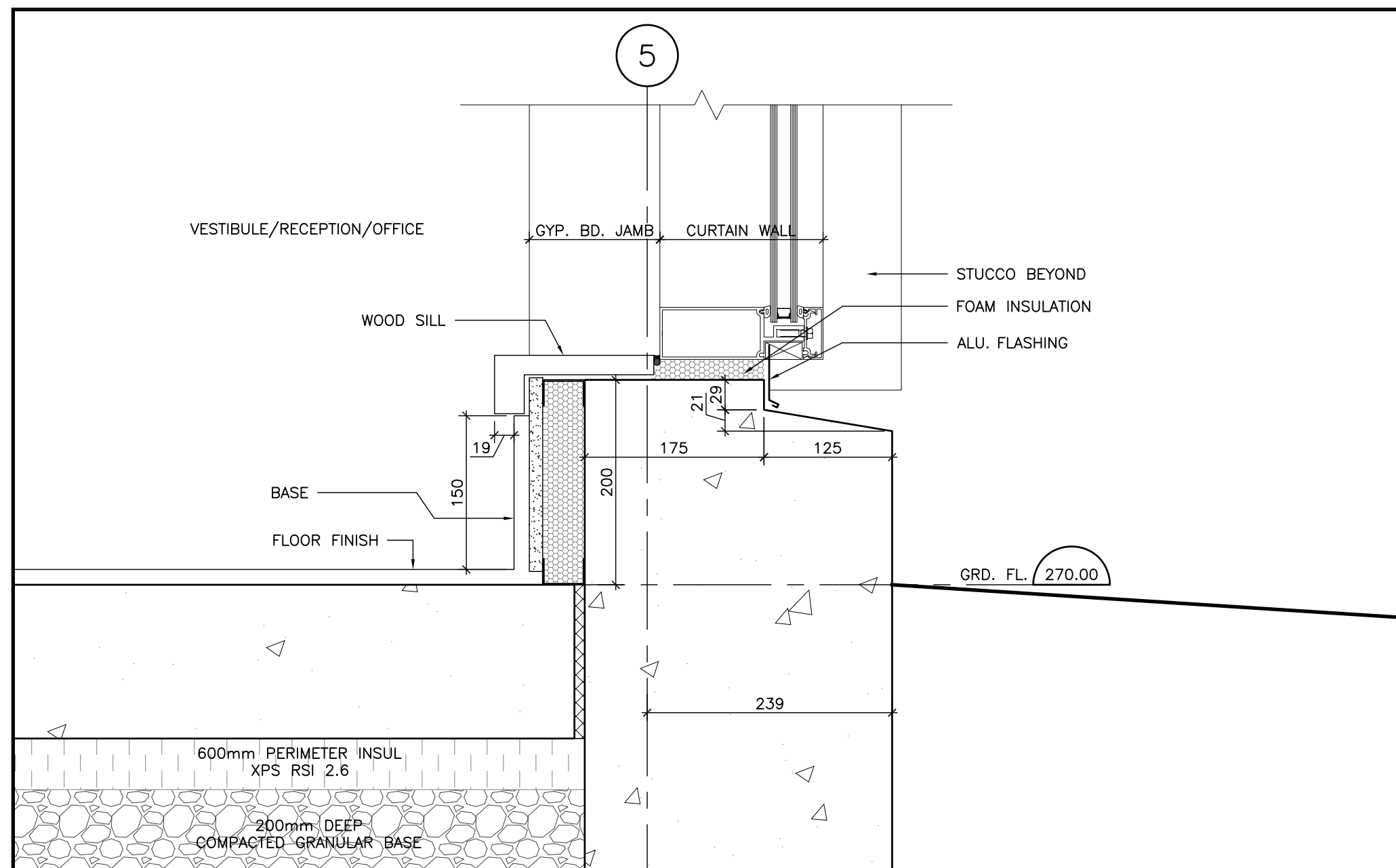
8 DETAIL-STUCCO REVEAL  
1:5



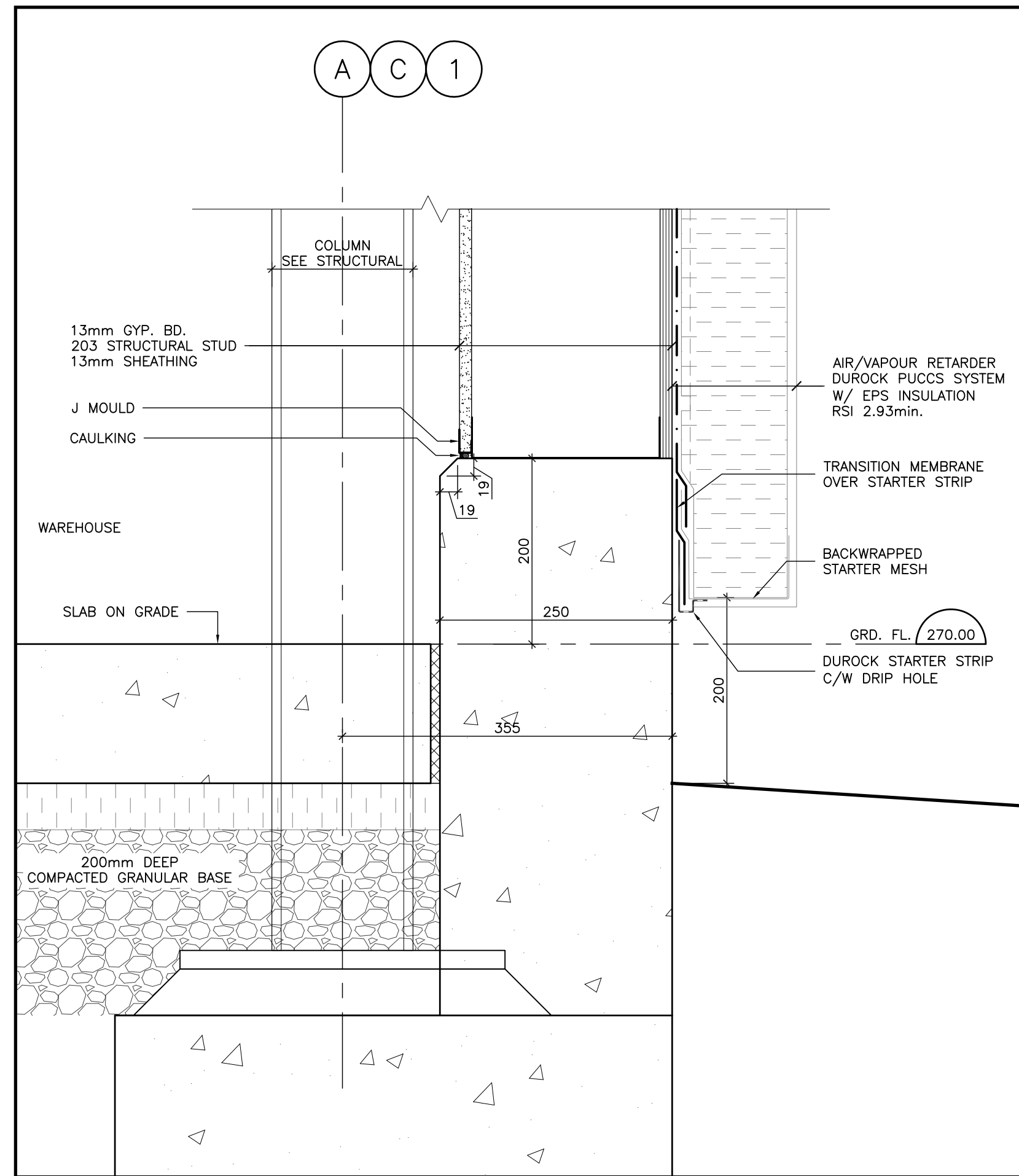
7 PLAN DETAIL - CURTAIN WALL/STUCCO  
1:5



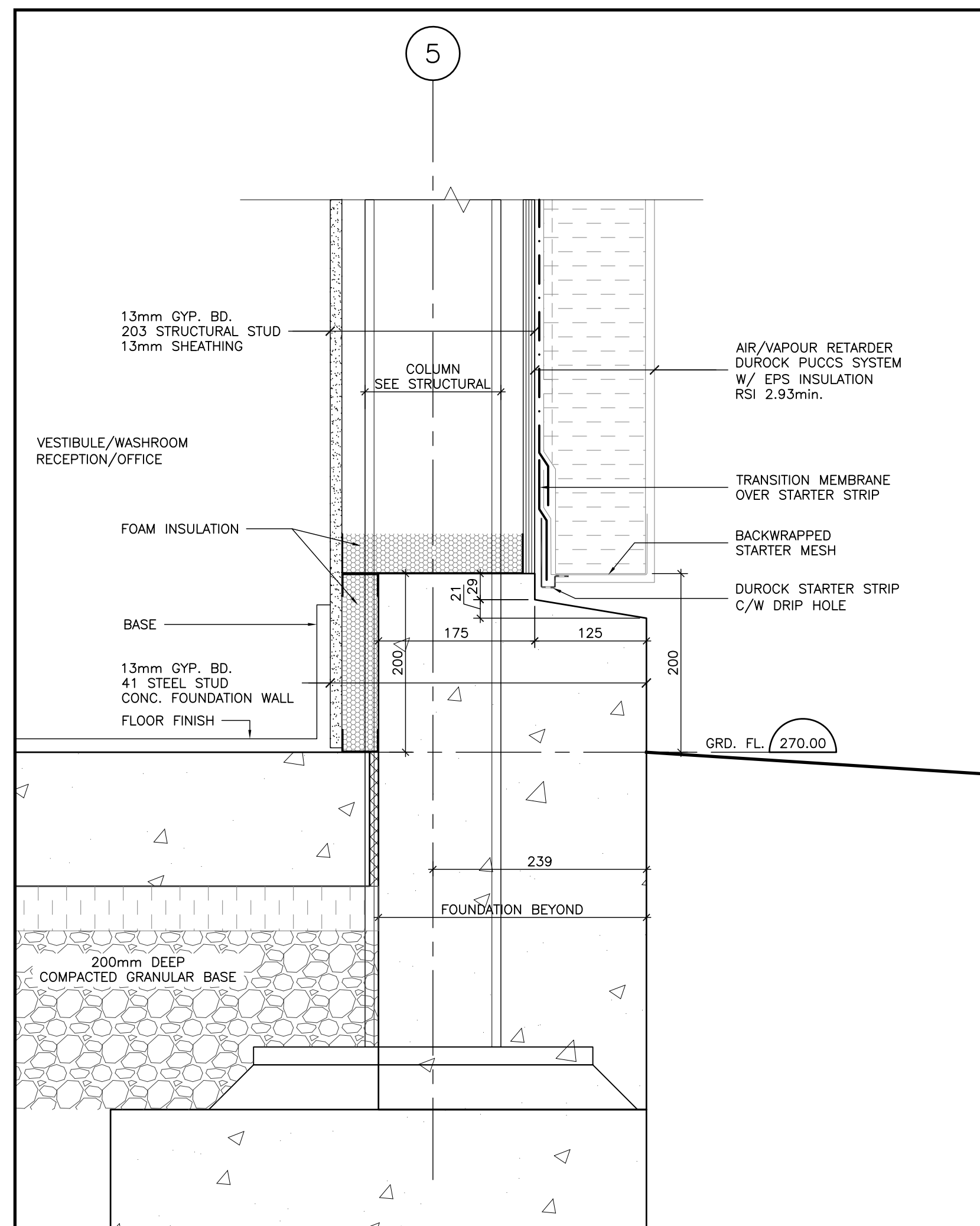
6 PLAN DETAIL - STUCCO CORNER  
1:5



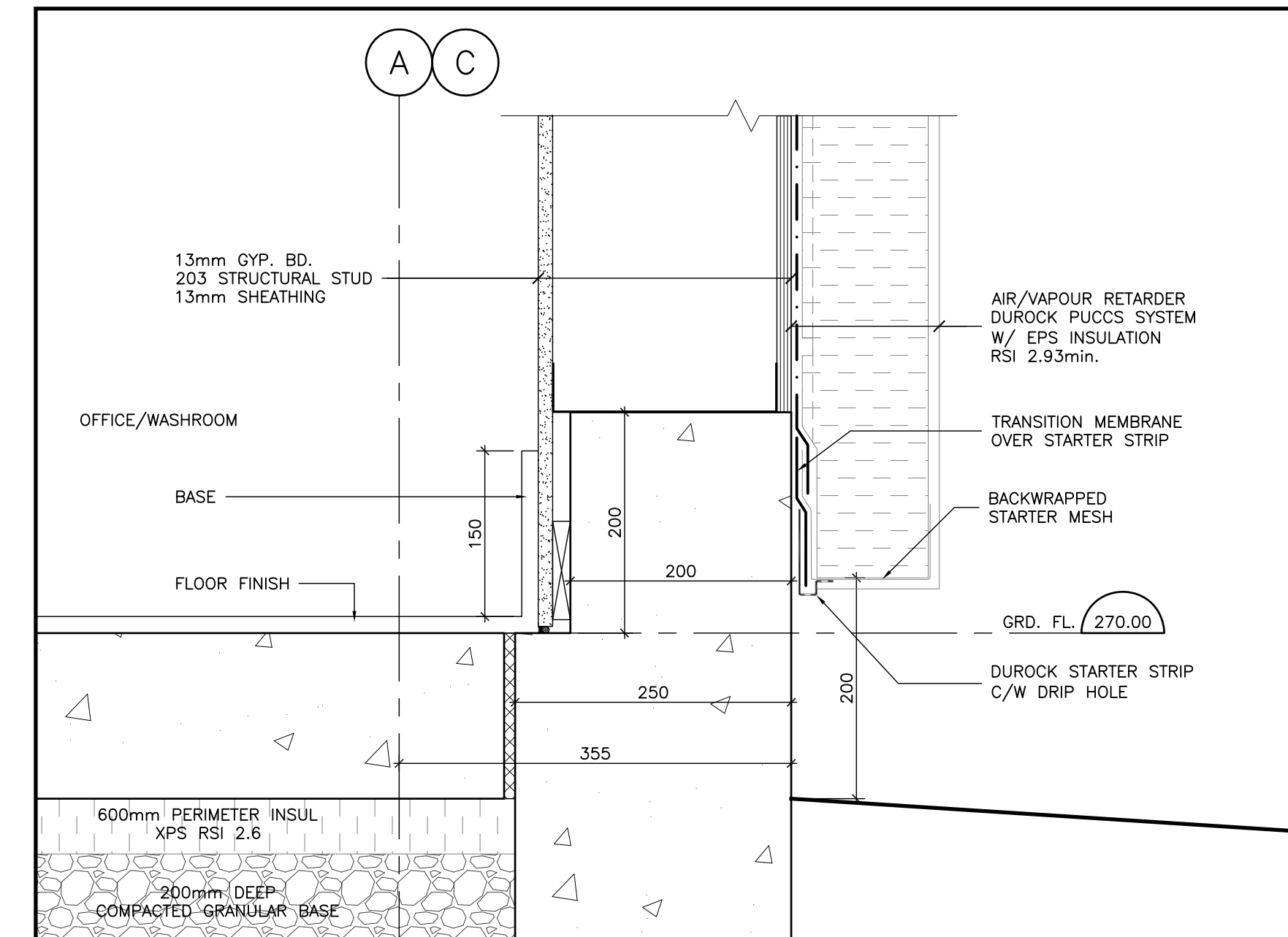
3 DETAIL-CURTAIN WALL ON GRID 5  
1:5



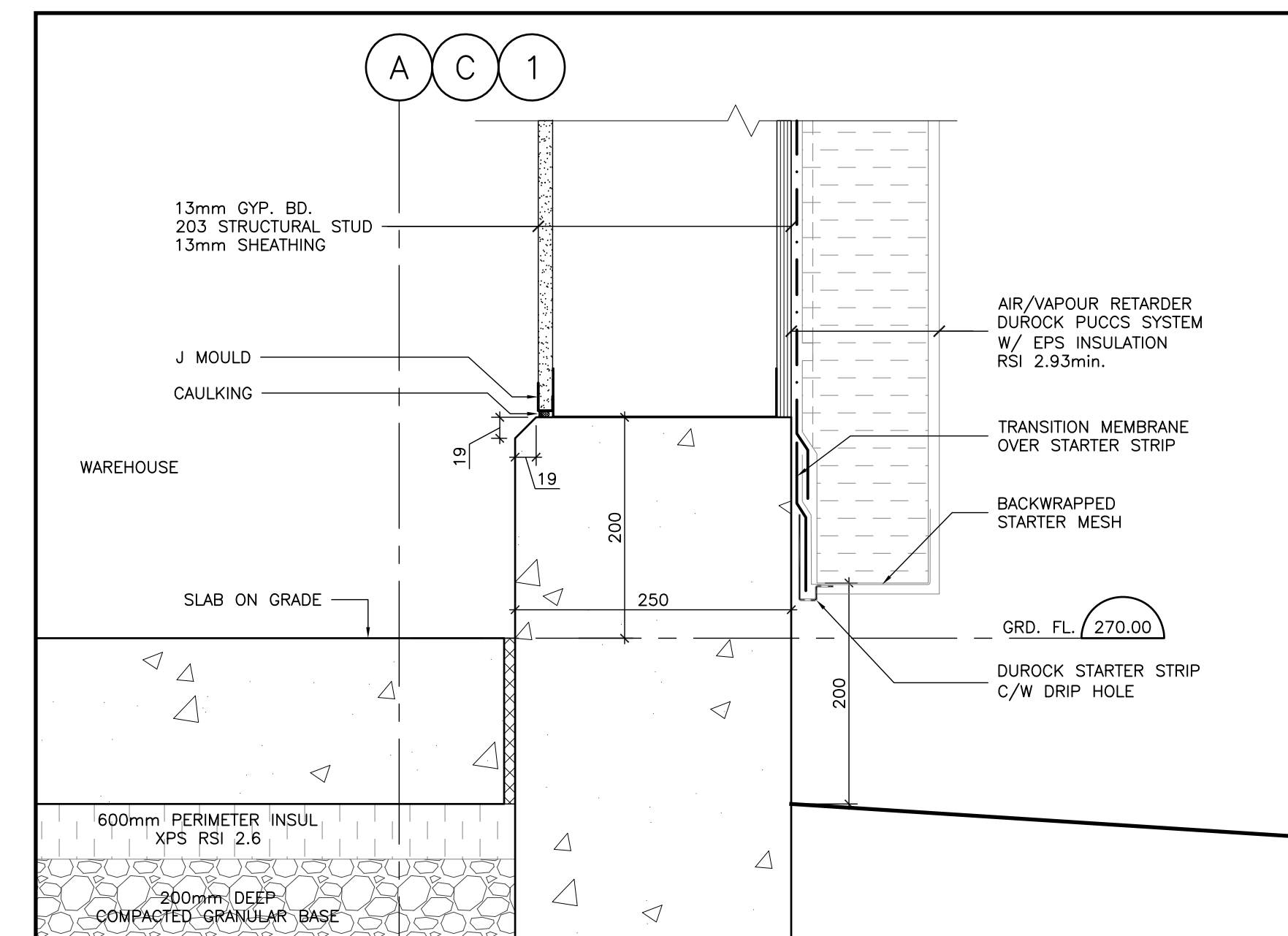
5 DETAIL-COLUMN FOUNDATION AT WAREHOUSE  
1:5



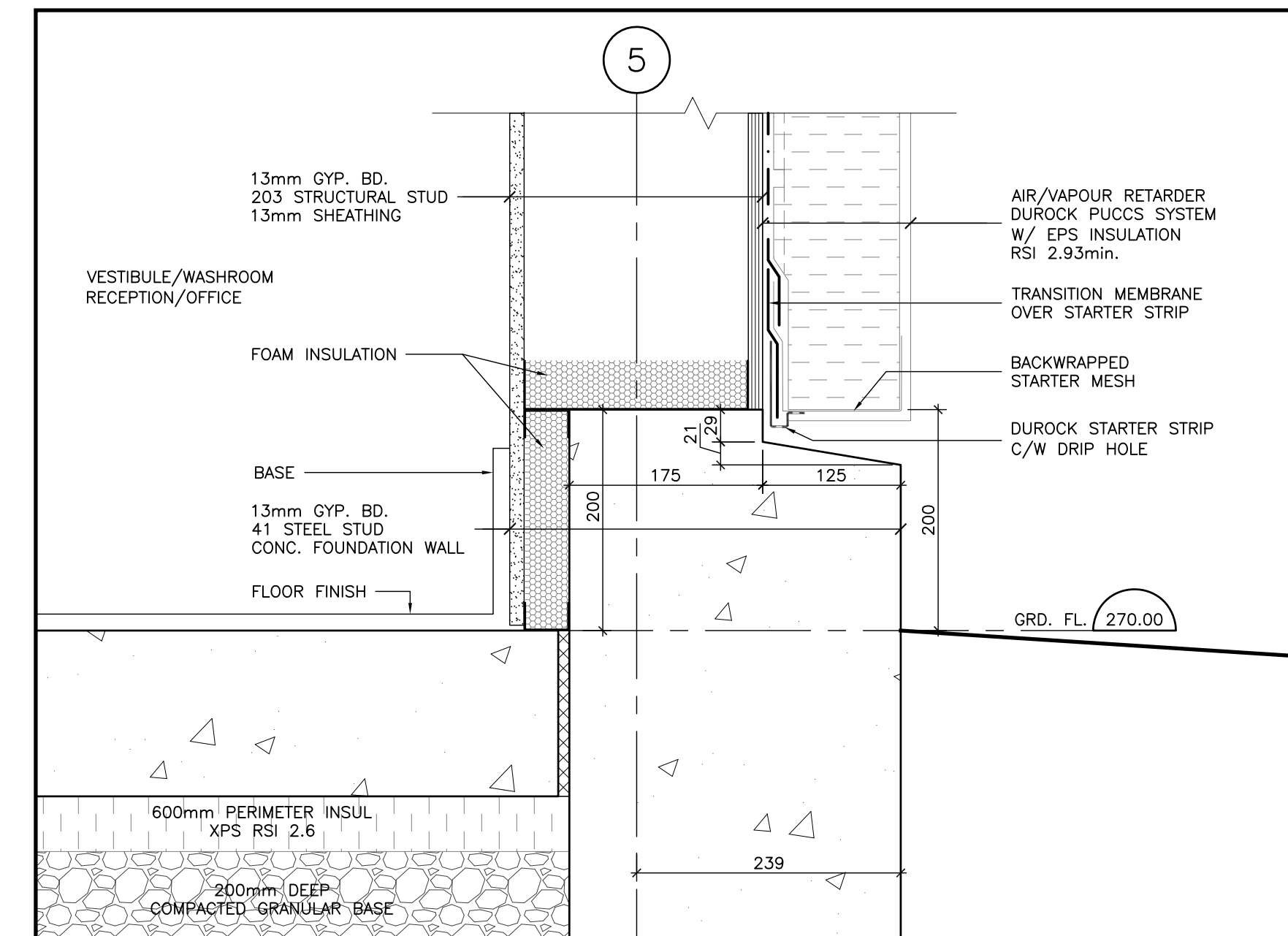
2 DETAIL-COLUMN FOUNDATION ON GRID 5  
1:5



5A DETAIL-FOUNDATION ON GRID A & C AT OFFICE  
1:5



4 DETAIL-FOUNDATION AT WAREHOUSE  
1:5



1 DETAIL-FOUNDATION ON GRID 5  
1:5

The contractor shall check all dimensions and other data from the job and report any discrepancies to the architects before proceeding. Do not scale drawing.

1	ISSUED FOR BUILDING PERMIT	2015-08-05
2	ISSUED FOR CONSTRUCTION	2016-03-02
NO.	REVISIONS	DATE

Owner  
JOCHRI INVESTMENTS LIMITED

Drawing Title  
DETAILS

Project Title  
NEW WAREHOUSE

200 INDUSTRIAL PARKWAY SOUTH AURORA



**Donald J. Caunter**  
Architect Limited

40 St. Clair Ave. East, Suite 302, Toronto, ON M4T 1M9 (416) 922-2040

Approved	DC	Checked	DC	Drawn By	WT
Scale	AS NOTED	Date	2014-09-10	File No.	116902
Drawing Number					Revision Number

A-501