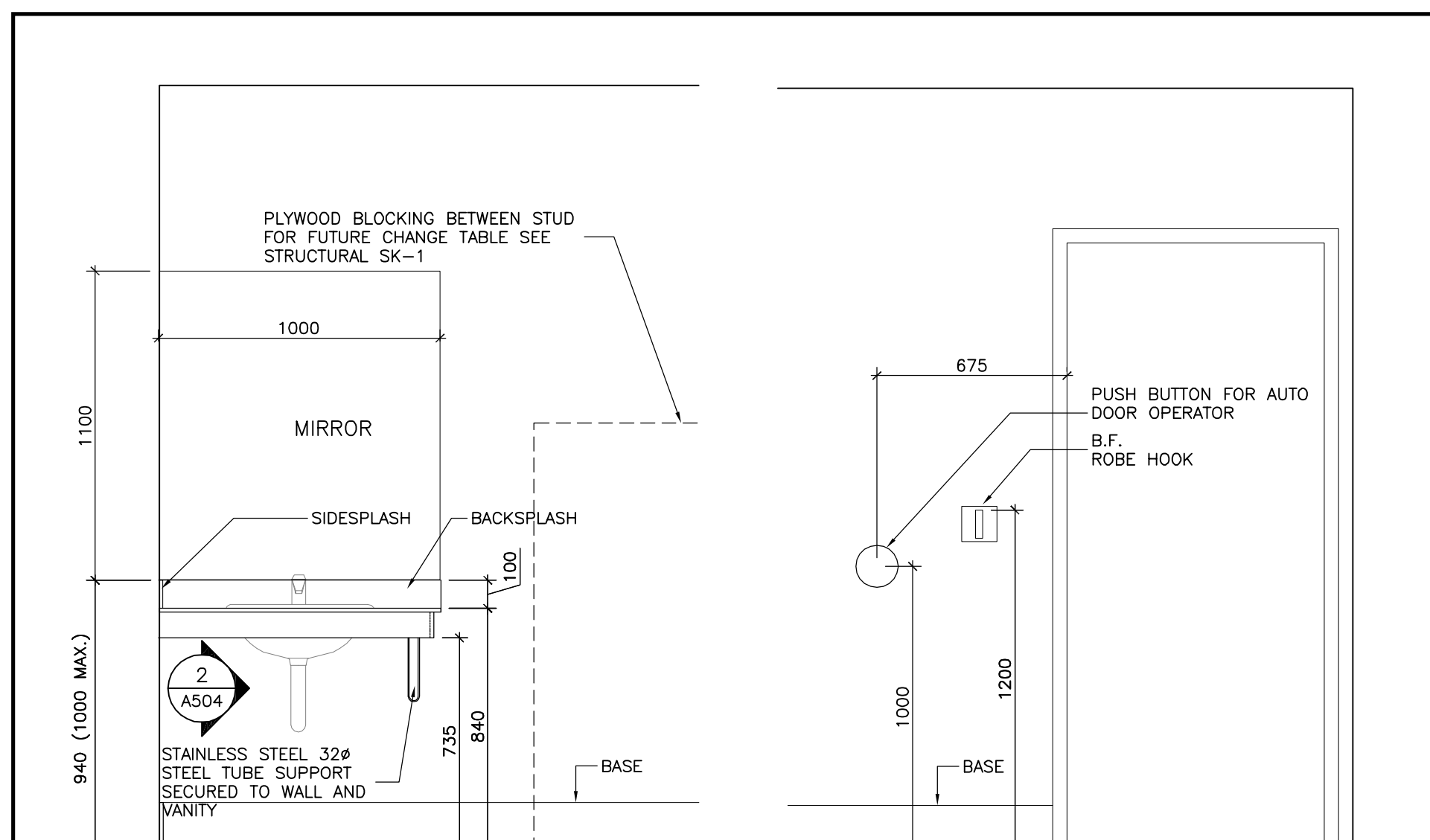
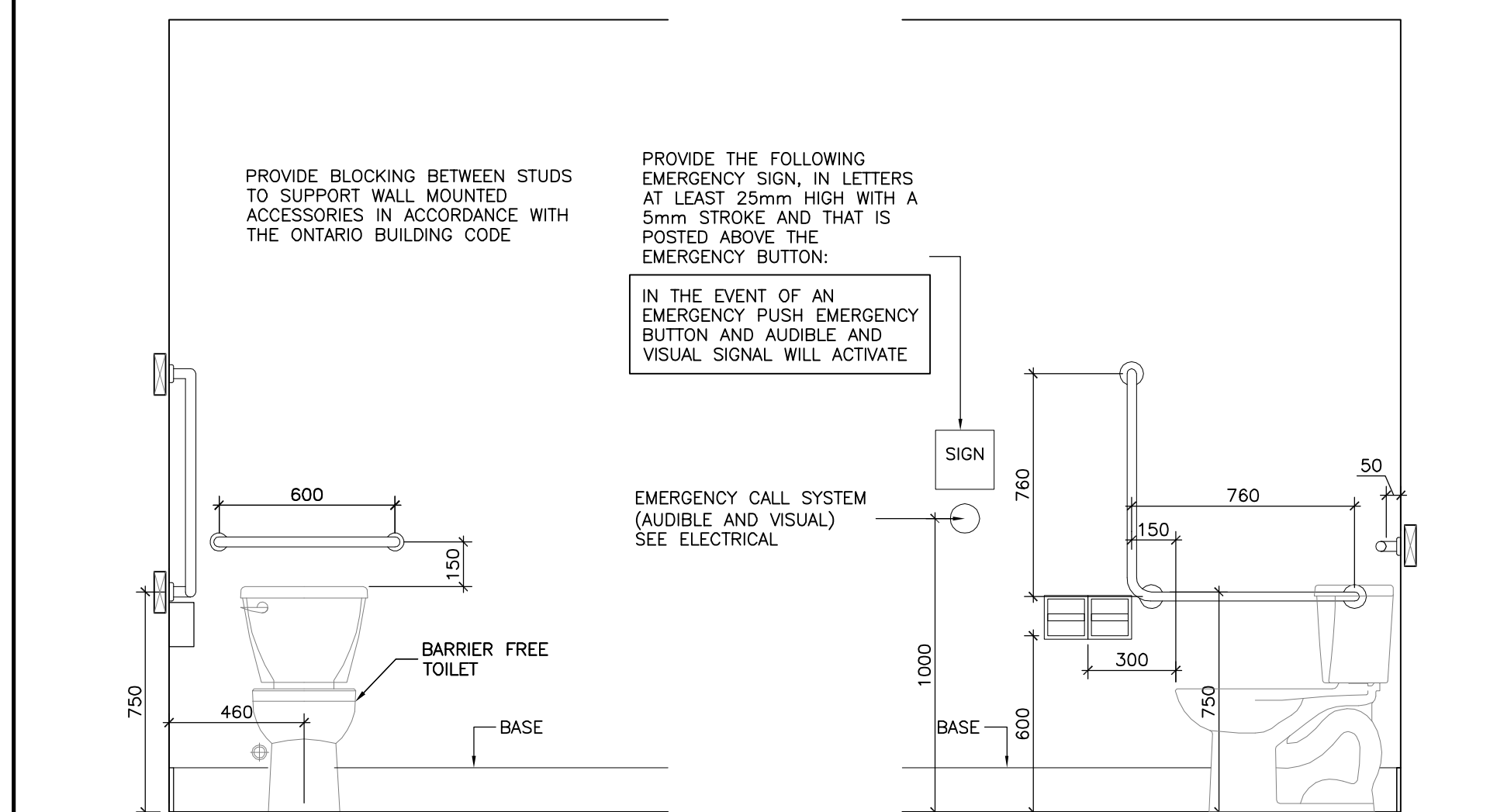


4 DETAIL-BARRIER FREE WASHROOM VANITY
1:10



TYP. B.F. WASHROOM VANITY

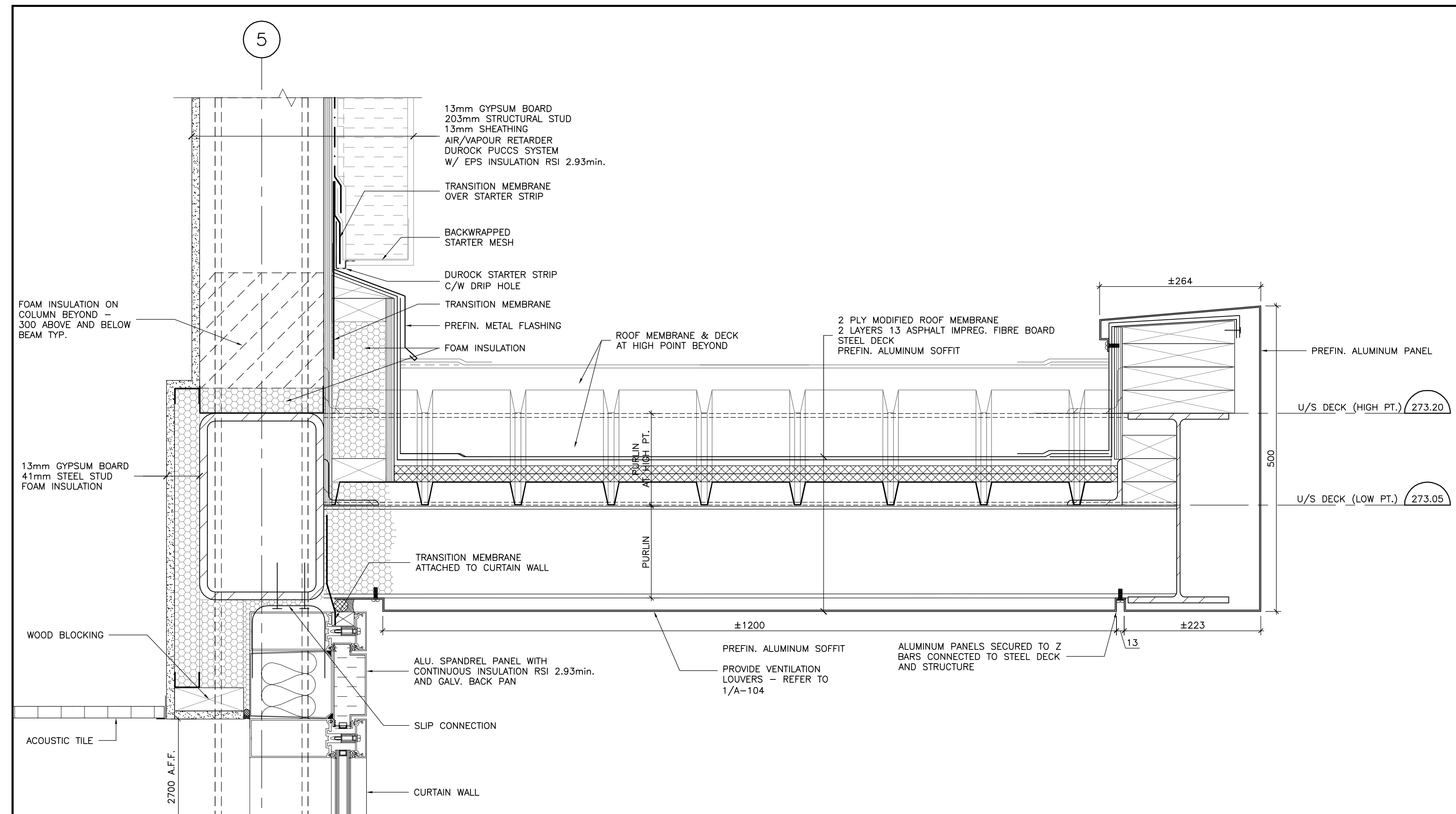
TYP. B.F. WASHROOM ROBE HOOK



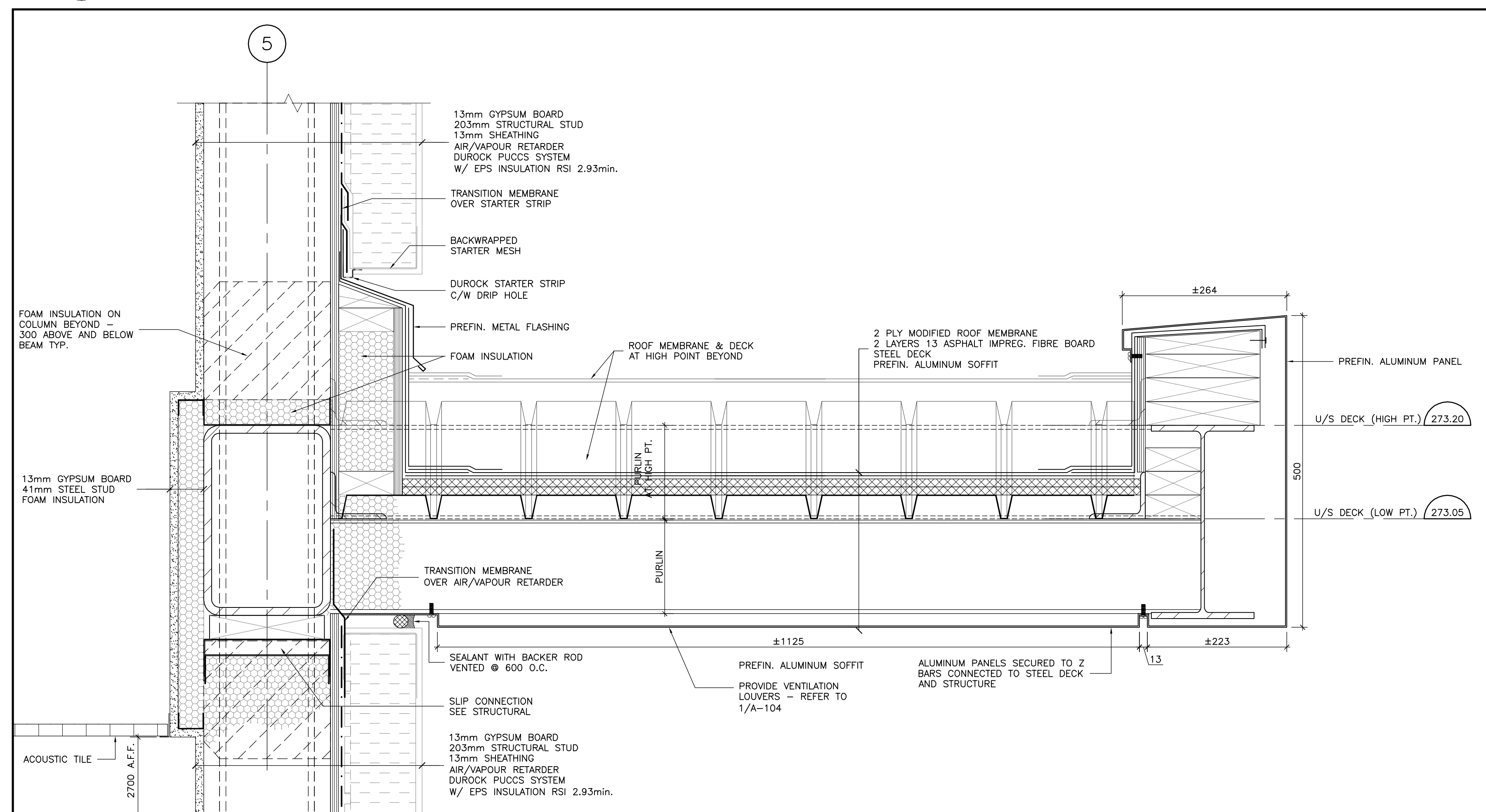
TYP. B.F. WASHROOM TOILET & ACCESSORIES

TYP. B.F. WASHROOM TOILET & ACCESSORIES

3 INTERIOR ELEVATIONS - UNIVERSAL WASHROOM
1:20



2 DETAIL-CANOPY AT CURTAIN WALL
1:5



1 DETAIL-CANOPY AT STUCCO
1:5

The contractor shall check all dimensions and other data from the job and report any discrepancies to the architects before proceeding. Do not scale drawing.

NO.	REVISIONS	DATE
1	ISSUED FOR BUILDING PERMIT	2015-08-05
2	ISSUED FOR CONSTRUCTION	2016-03-02

Owner
JOCHRI INVESTMENTS LIMITED

Drawing Title
DETAILS

Project Title
NEW WAREHOUSE

200 INDUSTRIAL PARKWAY SOUTH AURORA



Donald J. Caunter
Architect Limited

40 St. Clair Ave. East, Suite 302, Toronto, ON M4T 1M9 (416) 922-2040

Approved	Checked	Drawn By
DC	DC	WT
Scale	Date	File No.
AS NOTED	2014-09-10	116902

Drawing Number	Revision Number
A-503	