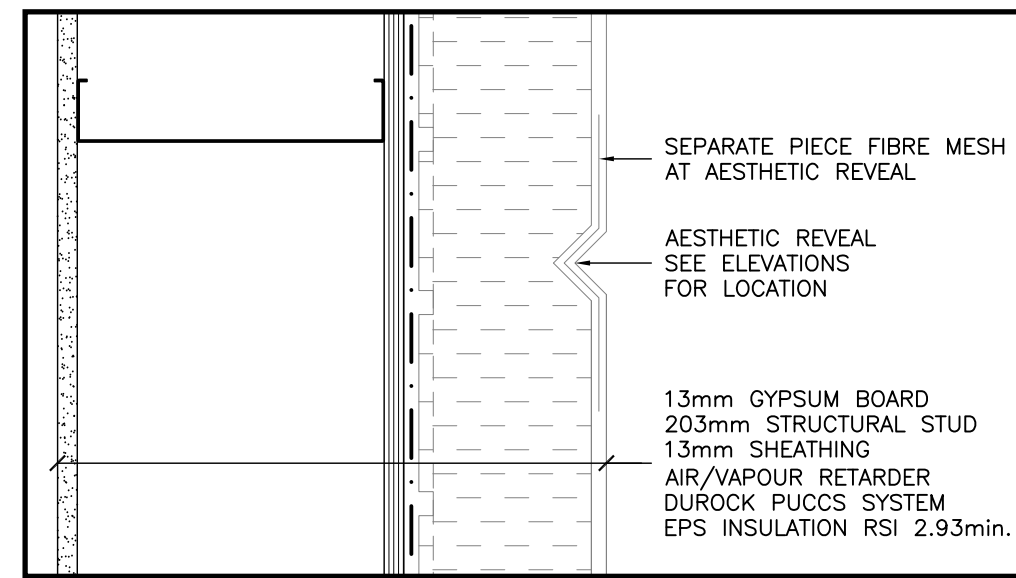
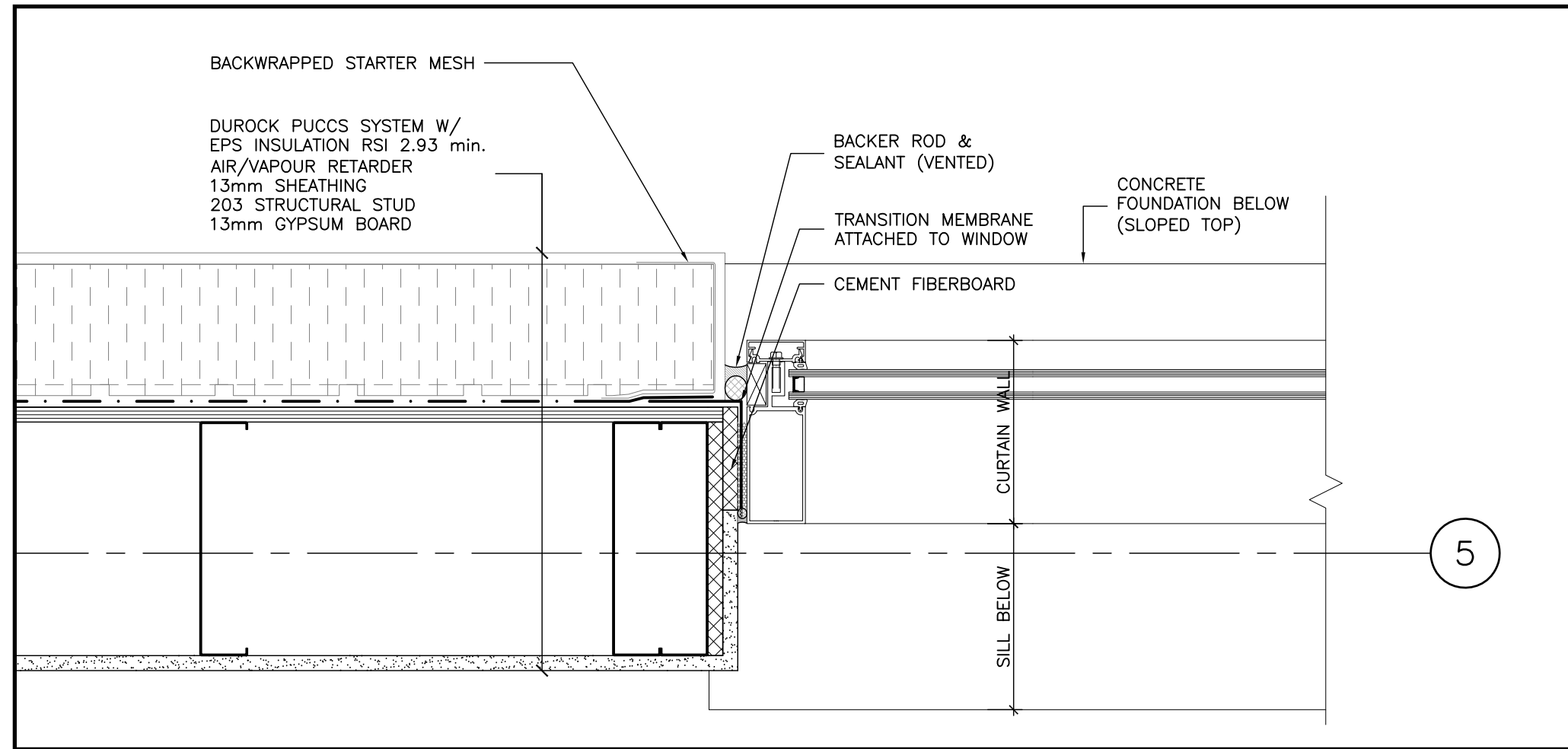


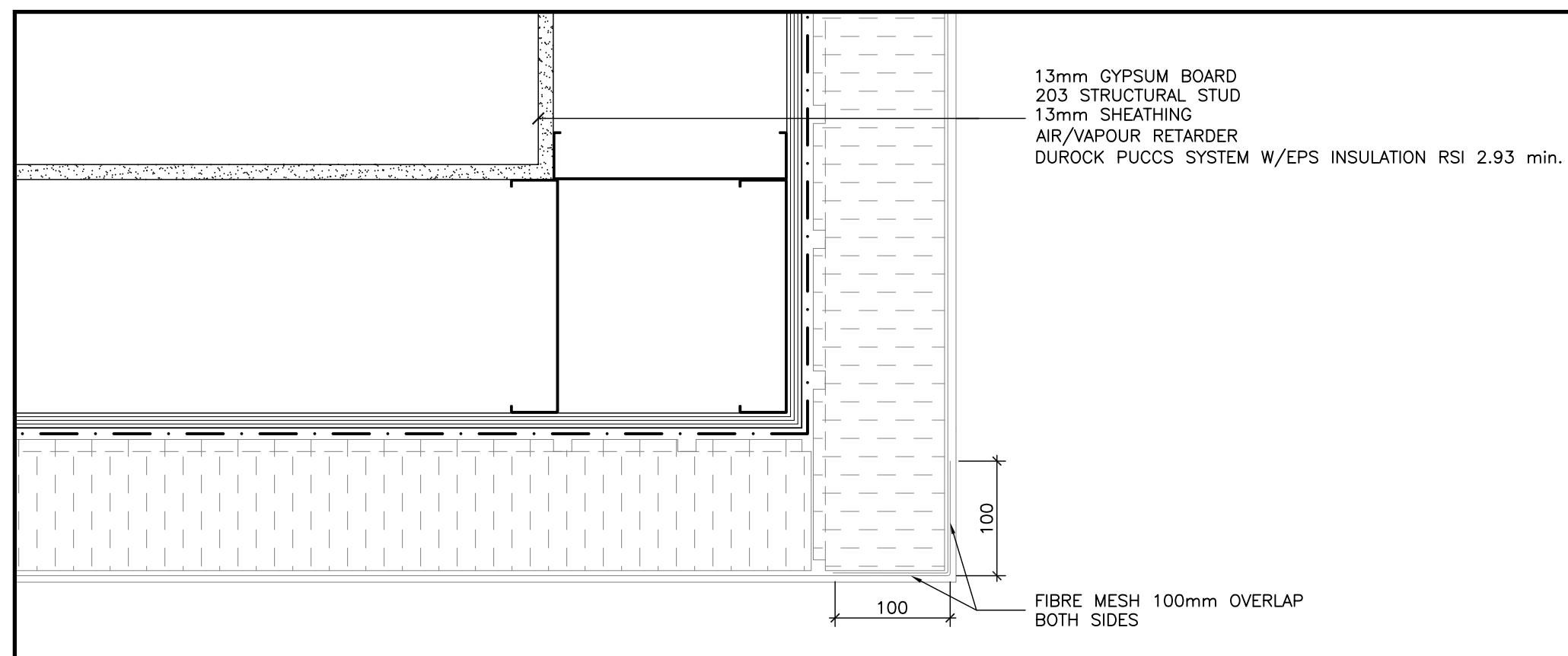
9 DETAIL-STUCCO EXPANSION JOINT  
1:5



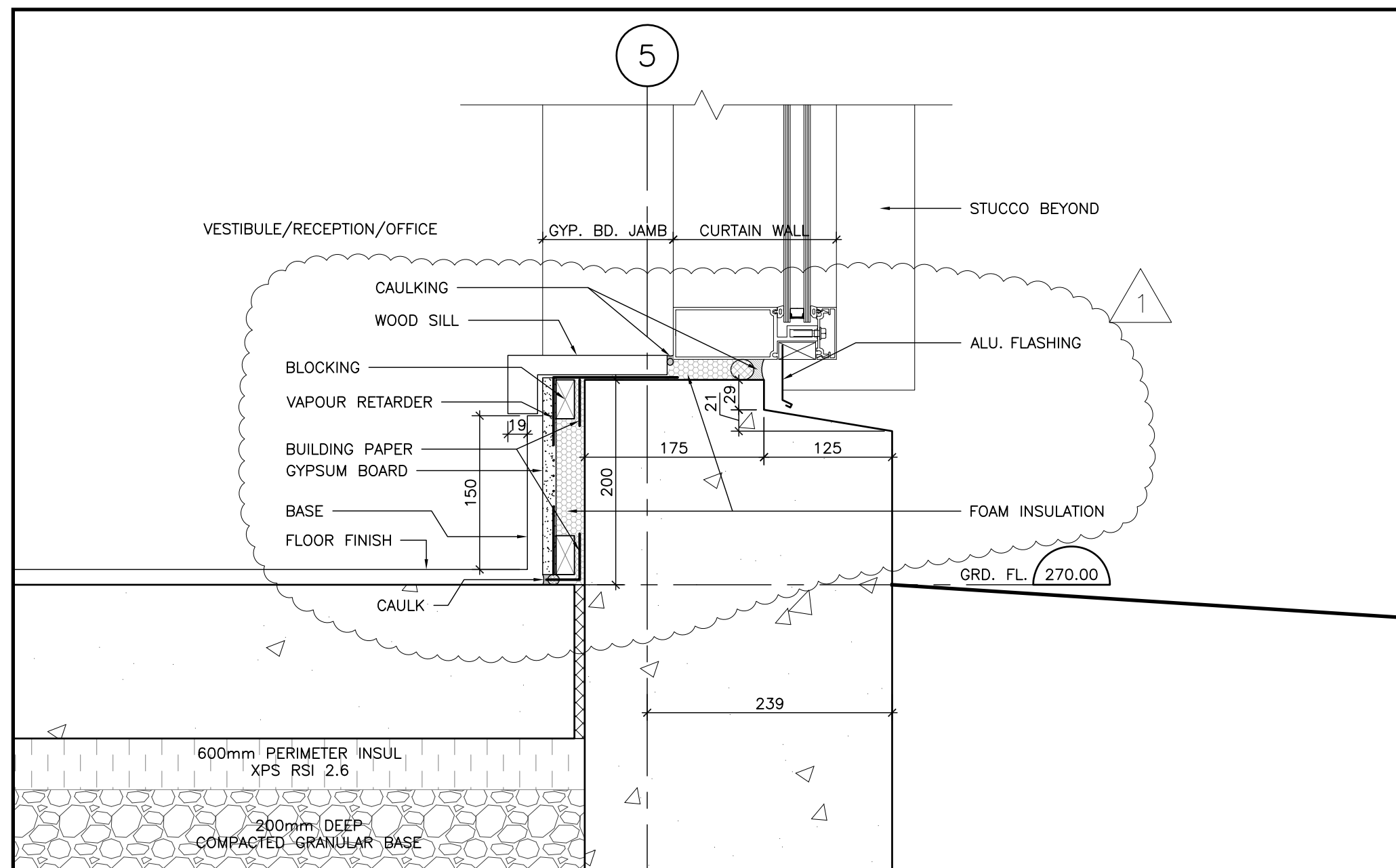
8 DETAIL-STUCCO REVEAL  
1:5



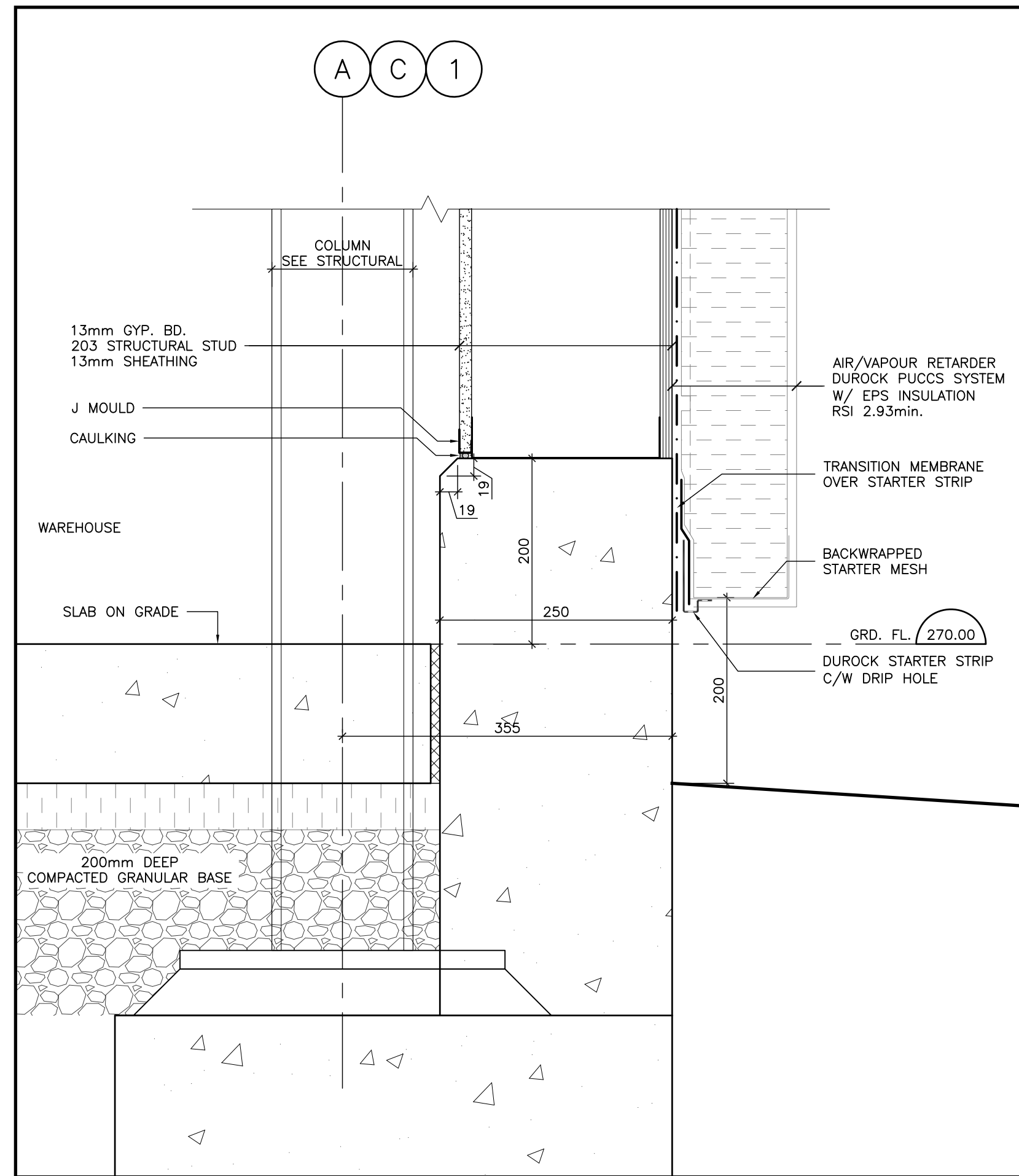
7 PLAN DETAIL - CURTAIN WALL/STUCCO  
1:5



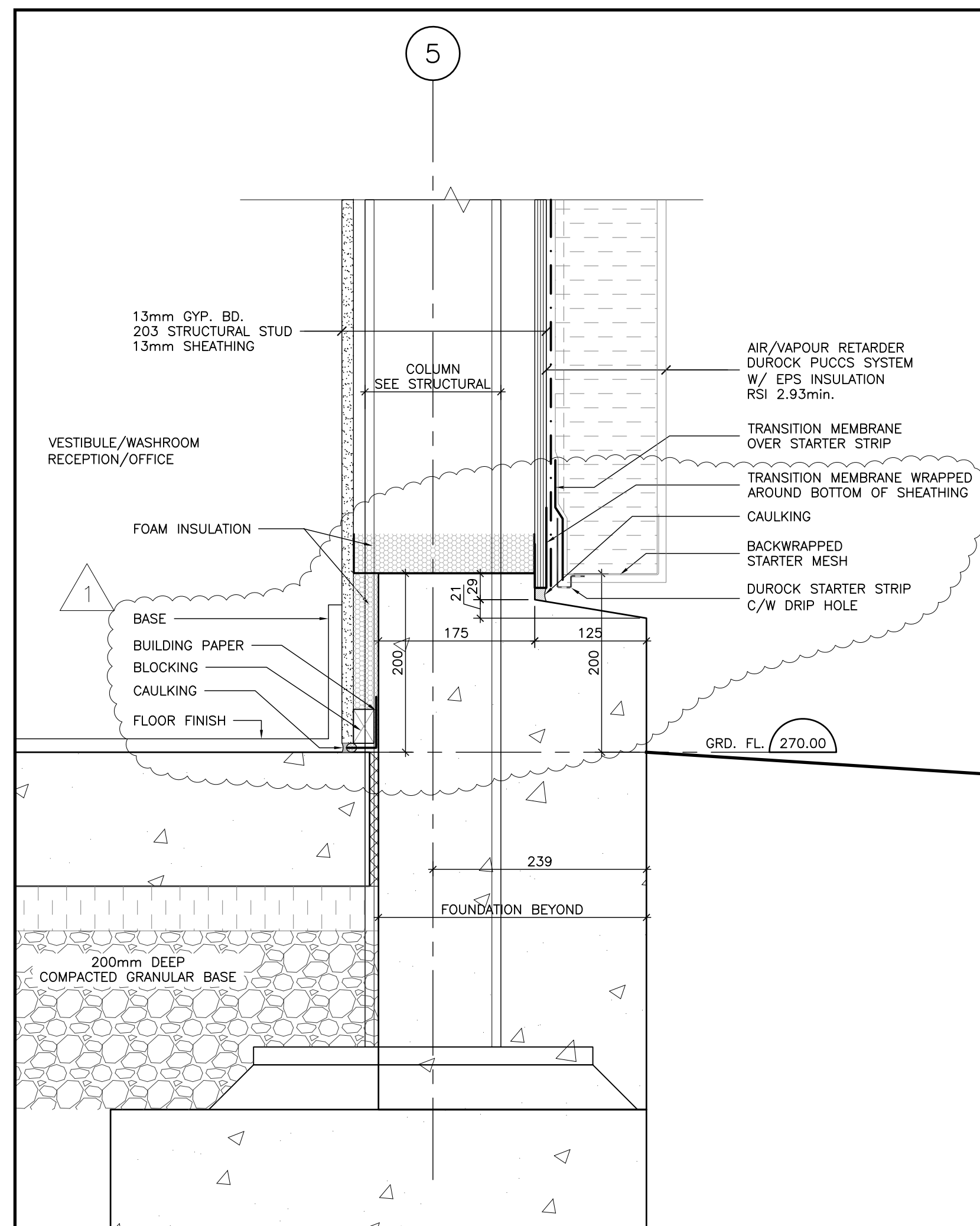
6 PLAN DETAIL - STUCCO CORNER  
1:5



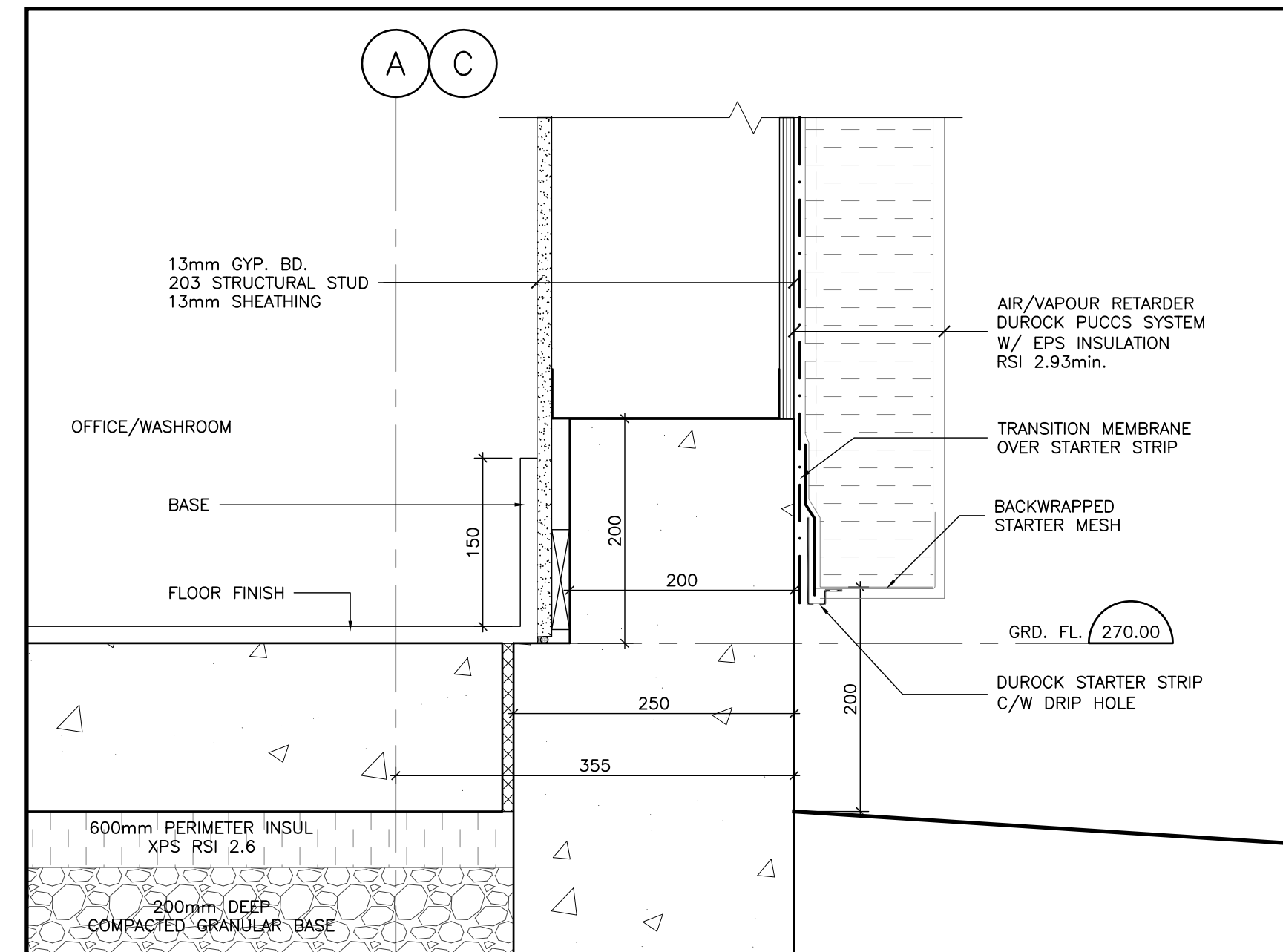
3 DETAIL-CURTAIN WALL ON GRID 5  
1:5



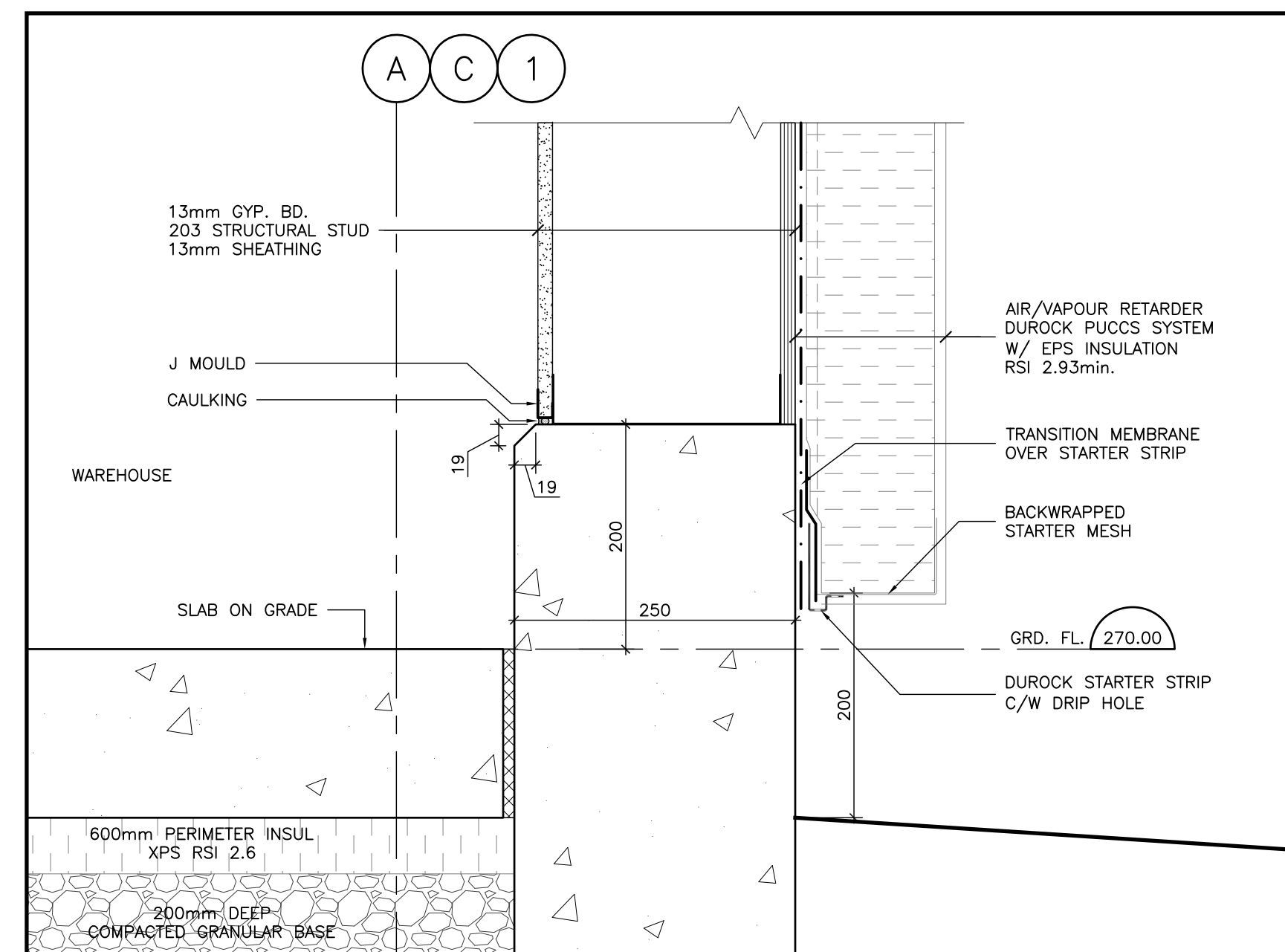
5 DETAIL-COLUMN FOUNDATION AT WAREHOUSE  
1:5



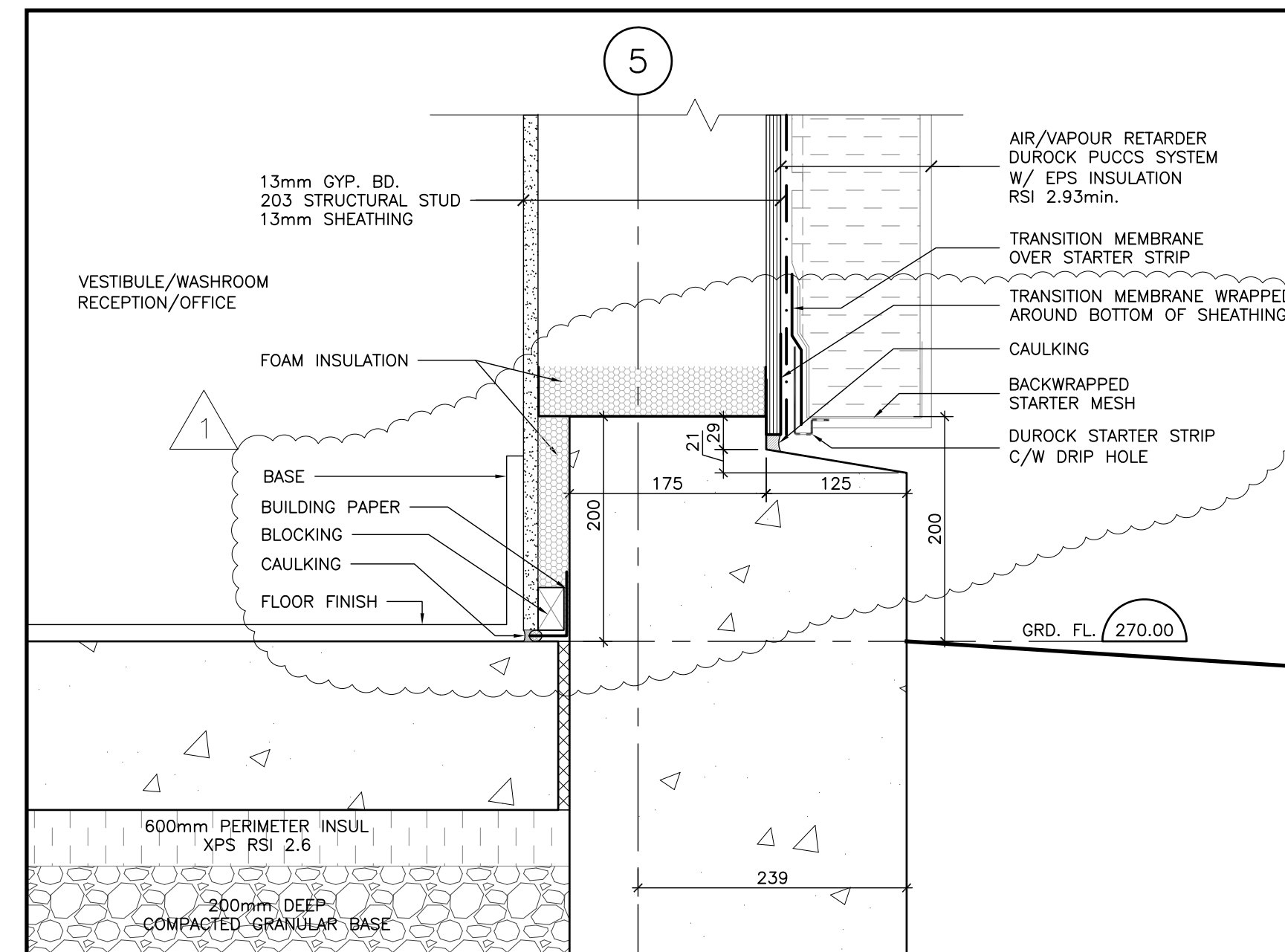
2 DETAIL-COLUMN FOUNDATION ON GRID 5  
1:5



5A DETAIL-FOUNDATION ON GRID A & C AT OFFICE  
1:5



4 DETAIL-FOUNDATION AT WAREHOUSE  
1:5



1 DETAIL-FOUNDATION ON GRID 5  
1:5

The contractor shall check all dimensions and other data from the job and report any discrepancies to the architects before proceeding. Do not scale drawing.

NO.	REVISIONS	DATE
1	ISSUED FOR BUILDING PERMIT	2015-08-05
2	ISSUED FOR CONSTRUCTION	2016-03-02
1	SI #01	2016-07-20

Owner  
JOCHRI INVESTMENTS LIMITED

Drawing Title  
DETAILS

Project Title  
NEW WAREHOUSE

200 INDUSTRIAL PARKWAY SOUTH AURORA



Donald J. Caunter  
Architect Limited

40 St. Clair Ave. East, Suite 302, Toronto, ON M4T 1M9 (416) 922-2040

Approved	Checked	Drawn By
DC	DC	WT
Scale	Date	File No.
AS NOTED	2014-09-10	116902
Drawing Number	Revision Number	

A-501 R1

Computer File Number: 116902-A-501-DT Copyright: 2014