

The contractor shall check all dimensions and other data from the job and report any discrepancies to the architects before proceeding. Do not scale drawing.

1	ISSUED FOR PRELIMINARY REVIEW	2014-09-10
2	ISSUED FOR SPA -1	2015-02-26
3	RE-ISSUED FOR SPA - 2	2015-05-22
4	ISSUED FOR BUILDING PERMIT	2015-08-05
5	ISSUED FOR CONSTRUCTION	2016-03-02

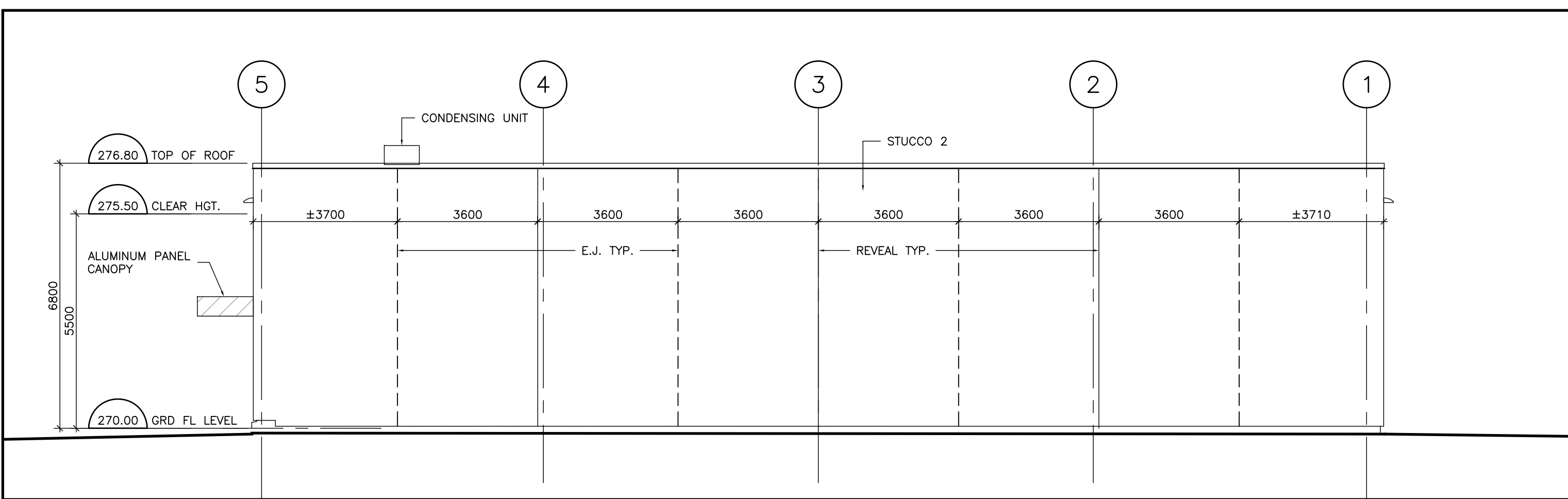
NO.	REVISIONS	DATE

- NOTES:
- PROVIDE COLOUR SAMPLES FOR APPROVAL.
 - STUCCO 1&2 - DRAINAGE/PRESSURE MODERATED RAINSCREEN, PUCCS SYSTEM BY DUROCK, COMPONENTS AS FOLLOWS, INSTALLED AS PER MANUFACTURER'S STANDARD SPECIFICATIONS:
 - AIR/VAPOUR RETARDER - VAPOUR BLOCK
 - TRANSITION MEMBRANE - AIRSEAL TRANSITION MEMBRANE
 - STARTER STRIP - UNI-TRACK, PVC EXTRUSION (BASE OF WALL)
 - DRAINAGE FLASH, PVC EXTRUSION (ABOVE OPENINGS)
 - INSULATION - MECHANICALLY FASTENED EXPANDED POLYSTYRENE TYPE 1, 0.65 RSI PER 25mm
 - BASE COAT - PREP COAT D
 - REINFORCING MESH - 5 OZ. REINFORCING MESH, 165g/m WITH DUROCK LOGO
 - DETAIL MESH - STARTER MESH, 145g/m, 241mm WIDE
 - CORNER MESH - 110Z. REINFORCING MESH, 370g/M, 970mm WIDE
 - PRIMER COAT - COLOUR PRIME, FACTORY MIXED, ACRYLIC BASED HOMOGENEOUSLY PIGMENTED TO MATCH FINISH COLOUR.
 - FINISH COAT (STUCCO 1) - 2 COATS OF AIRLESS COATING ON TROWELLED SMOOTH BASECOAT, COLOUR SLATE GREY-LQ.
 - FINISH COAT (STUCCO 2) - FACTORY MIXED ACRYLIC BASED, HOMOGENEOUSLY PIGMENTED, COLOUR D096-LQ, MARBLE FINE.
 - VINYL EXTRUSIONS - VINYL CONTROL JOINT, UNI-TRACK.
 - CURTAIN WALL:
 - CURTAIN WALL SECTION TO HAVE ASSEMBLY U-VALUE OF 1.99 MAXIMUM.
 - ALUMINUM COLOUR: CLEAR ANODIZED.
 - SPANDREL COLOUR: CLEAR ANODIZED.
 - GLAZING:
 - TEMPERED GLASS
 - SHGC 0.40
 - VT 0.70
 - SEALED UNIT: LOW E, CLEAR & CLEAR, SOLARBAN 60 BY PPG
 - CANOPY:
 - PREFINISHED ALUMINUM PANEL, DURANAR XL COLOUR TO MATCH IG#30GY 15/242.

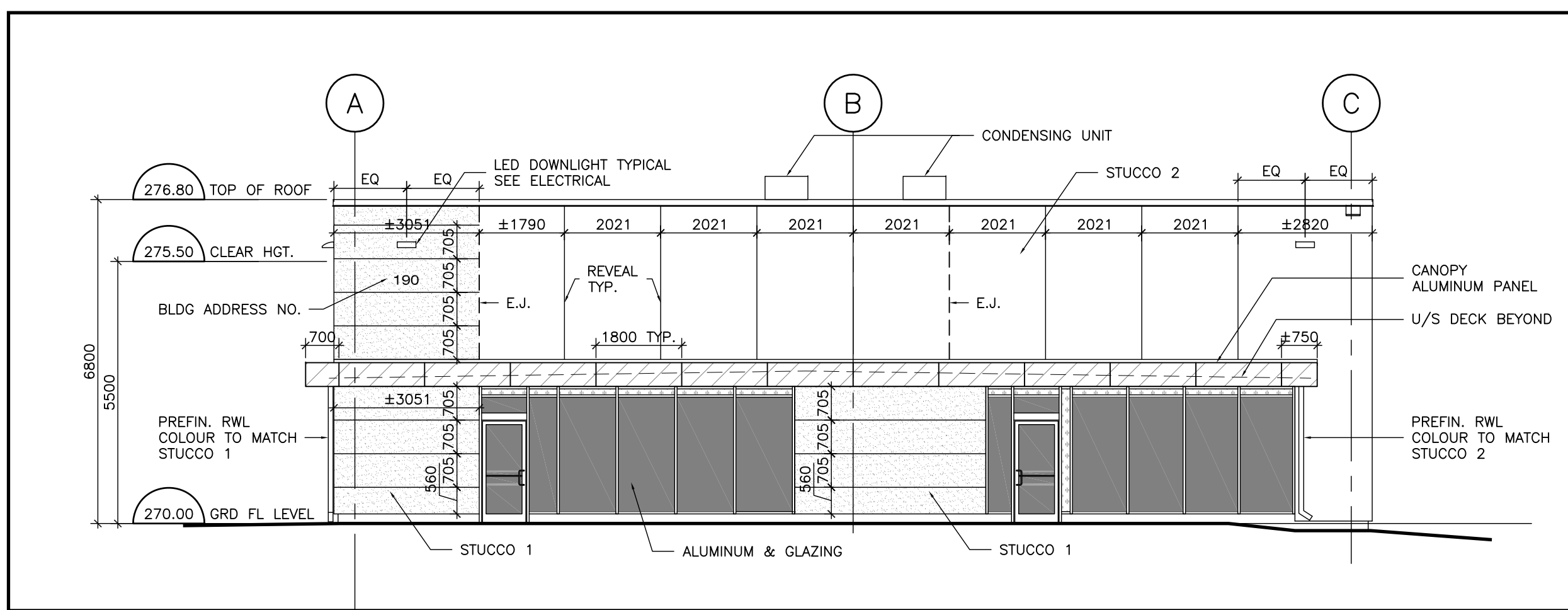
Roof Assembly	Thickness	Provided		Required	
		RSI	U-Value	RSI	U-Value
Outside Air Film		0.03			
Roofing Membrane		0.09			
Protection Board (11mm fiberboard)	11 mm	0.0671			
Continuous insulation - Polycyanurate	150 mm	5.3	5.3cd		
Vapour Retarder		-			
Metal Deck		0.001			
Interior Air Film		0.11			
		5.5081	5.5556	0.18	
Wall Assembly - Stucco					
Outside Air Film		0.03			
Acrylic Stucco		-			
Continuous insulation -EPS	114 mm	2.93	1.8cd		
Moisture Barrier		-			
Sheathing - Canaglass Gold	13 mm	0.099			
Steel Stud	203 mm	0.002683			
Air/Vapour Retarder		-			
Gypsum board	13 mm	0.0793			
Interior Air Film		0.12			
		3.2015083	3.2258	0.31	
Slab on Grade					
Concrete Slab	150 mm	0.06		2.6 for 600mm	
Perimeter insulation (600mm)		2.8	1.1111	0.9	
		2.86	1.1111	0.9	
Doors & Windows					
		SHGC	U-Value	SHGC	U-Value
Opaque Doors - Swinging		-	2.27	-	2.27
Opaque Doors - Non-swinging		-	2.27	-	2.27
Penetration - Curtain Wall		0.4	1.99	0.4	1.99
Penetration - Entrance Door		0.4	3.97	0.4	3.97

NOTES:
1. DESIGN CURTAIN WALL TO MEET CURRENT OBC REQUIREMENTS.

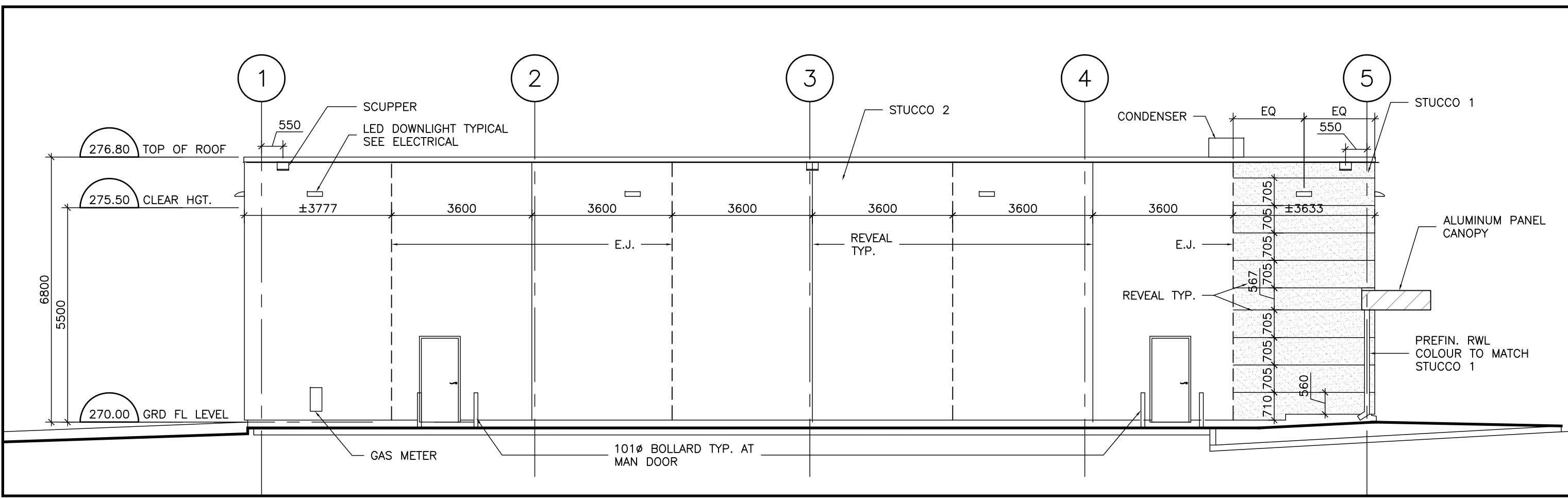
- LEGEND:
- STUCCO - FINISH TYPE 1
 - STUCCO - FINISH TYPE 2
 - PREFIN. ALUMINUM
 - GLAZING
 - SPANDREL PANEL



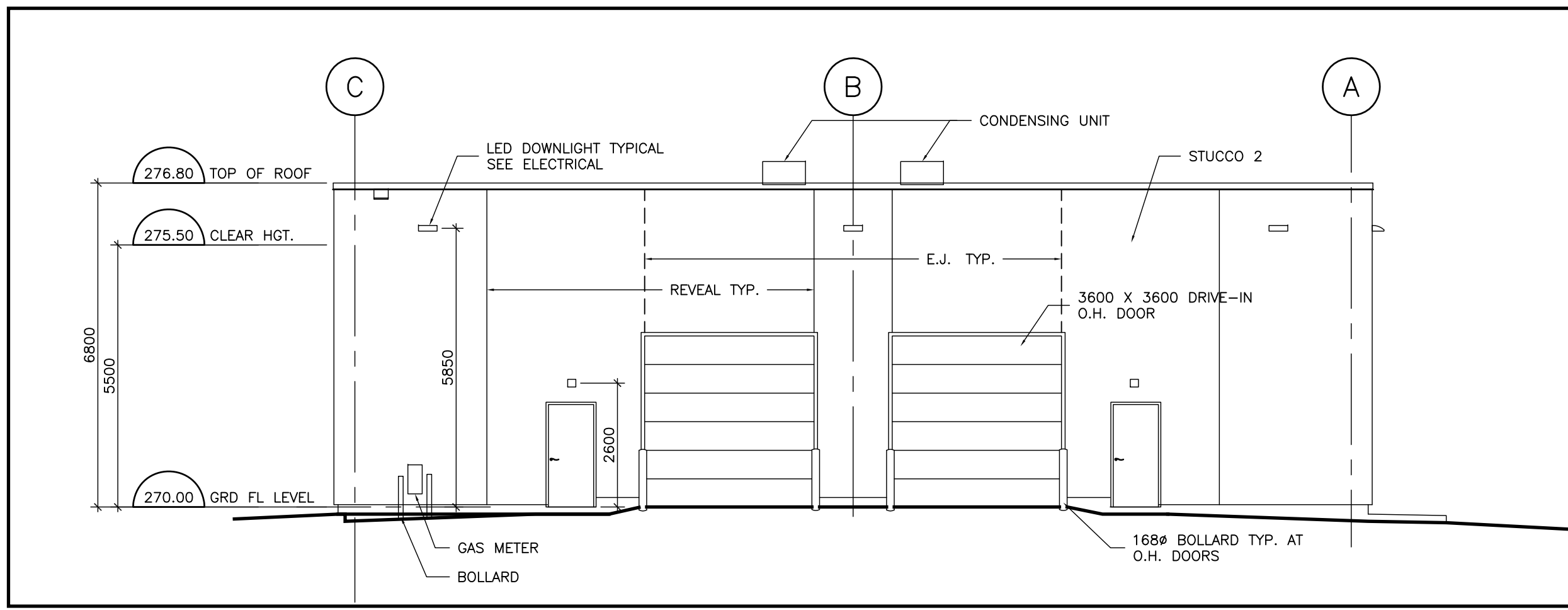
4 WEST ELEVATION
1:100



3 NORTH ELEVATION
1:100



2 EAST ELEVATION
1:100



1 SOUTH ELEVATION
1:100

Owner
JOCHRI INVESTMENTS LIMITED

Drawing Title
ELEVATIONS & BUILDING SECTIONS

Project Title
NEW WAREHOUSE

190 INDUSTRIAL PARKWAY SOUTH AURORA



Donald J. Caunter Architect Limited

40 St. Clair Ave. East, Suite 302, Toronto, ON M4T 1M9 (416) 922-2040

Approved	DC	Checked	DC	Drawn By	WT
Scale	1:100	Date	2014-09-10	File No.	116902
Drawing Number	A-201			Revision Number	