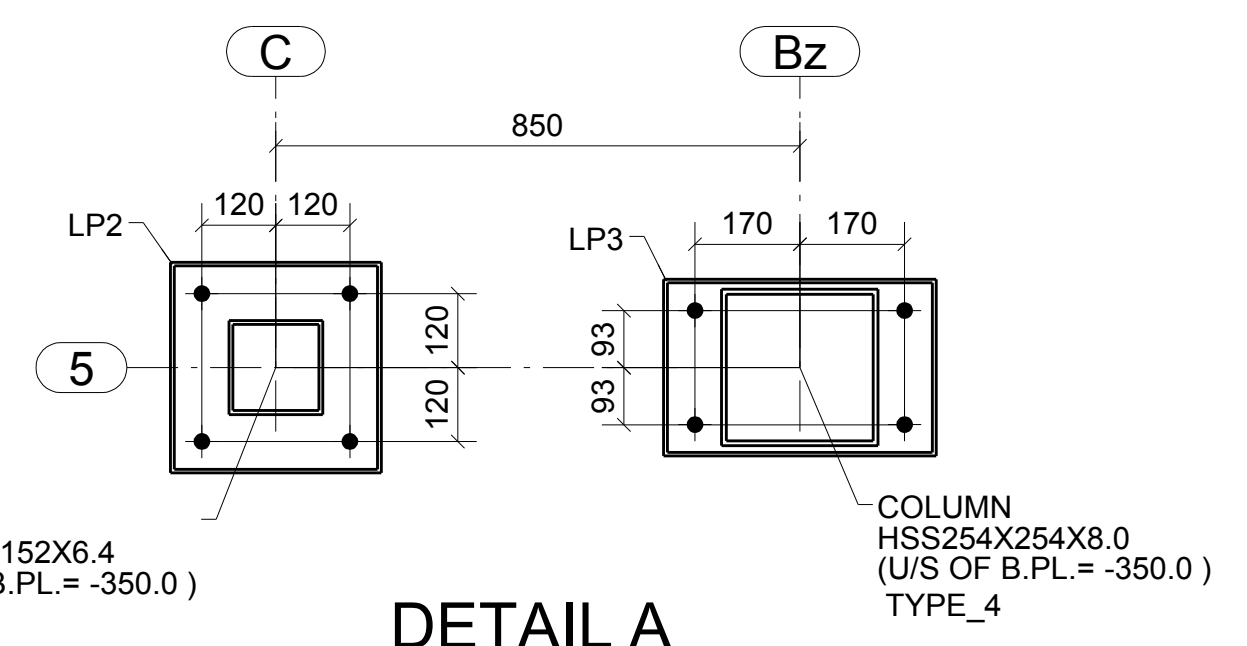
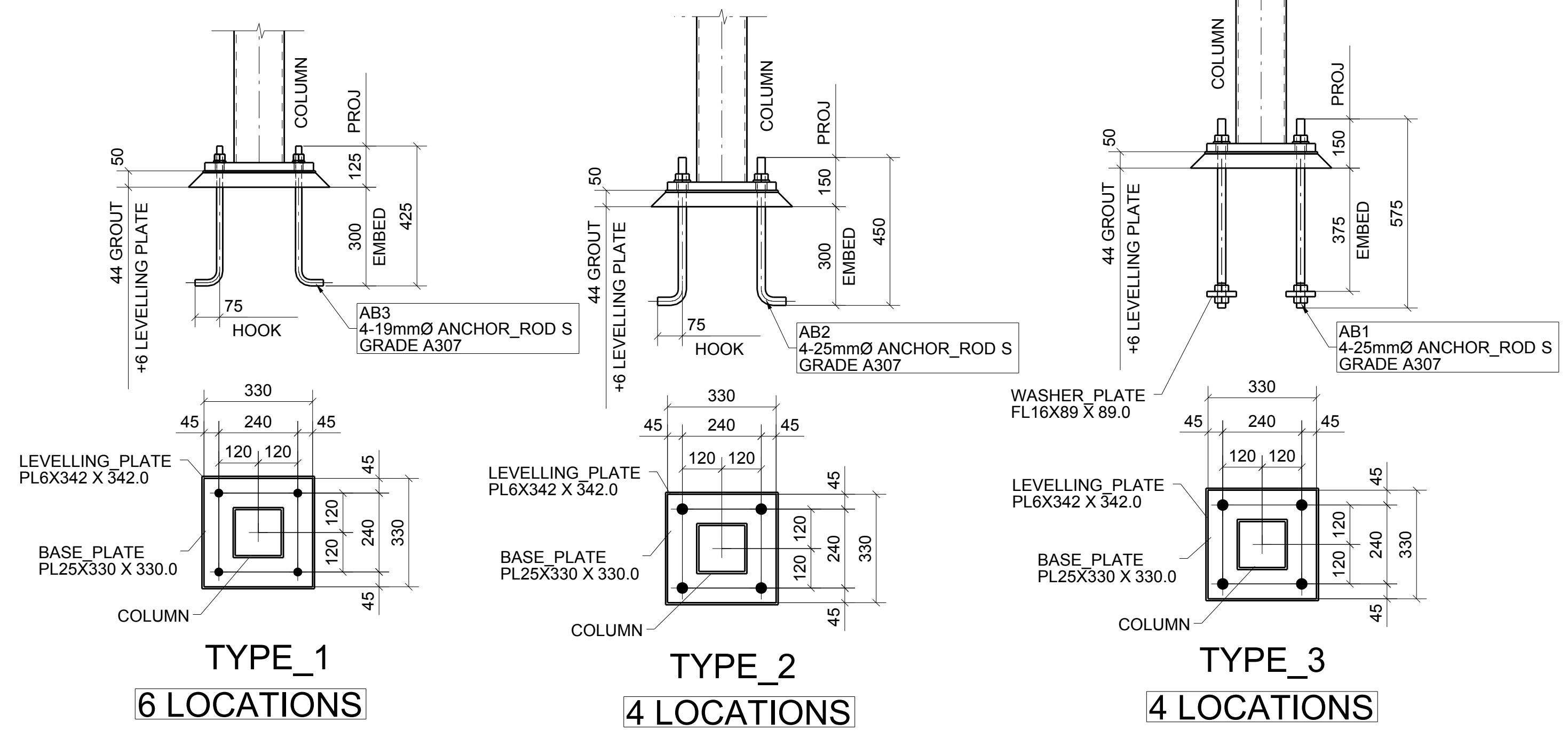


ANCHOR BOLT SETTING PLAN



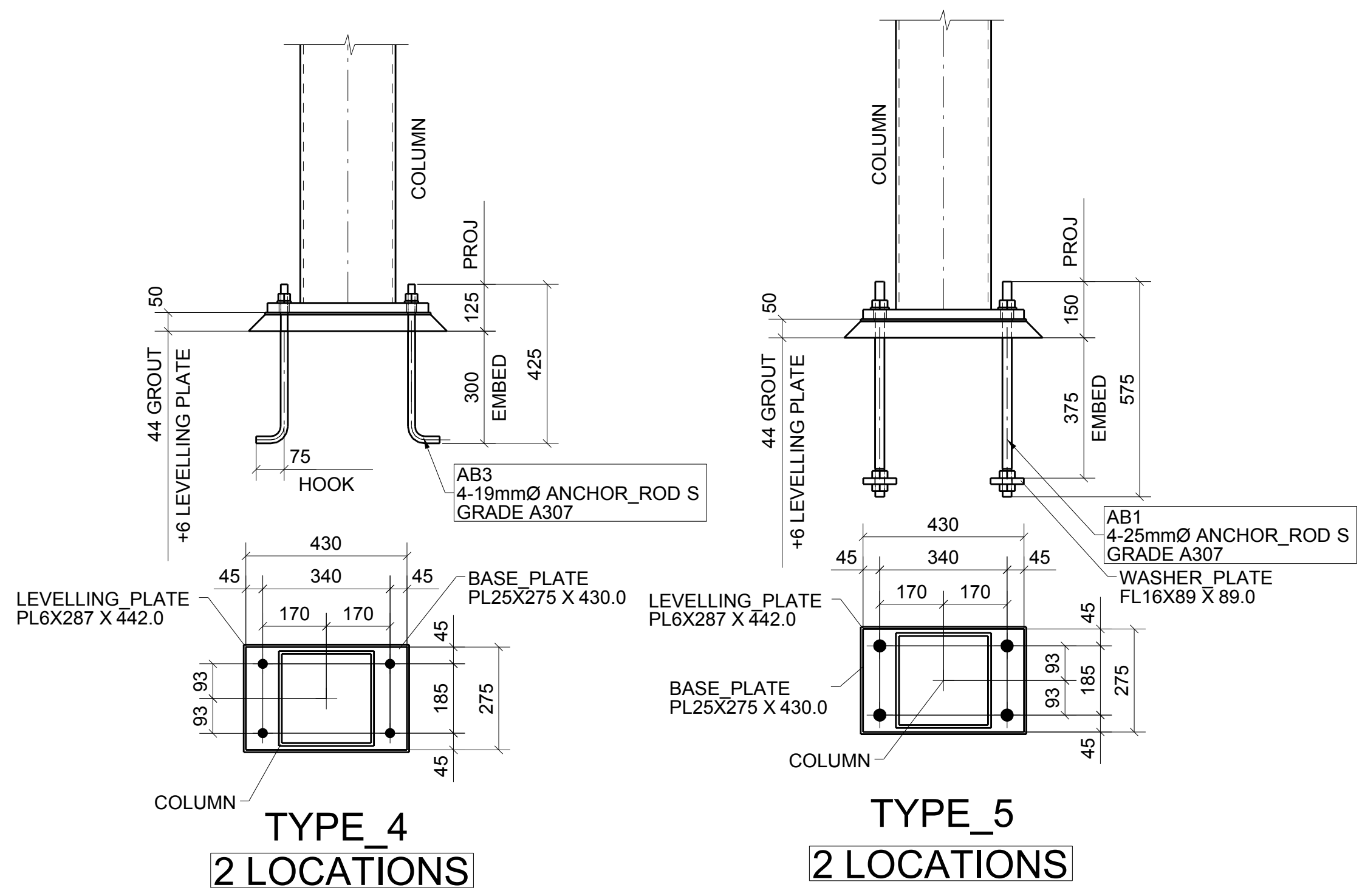
DETAIL A



TYPE_1
6 LOCATIONS

TYPE_2
4 LOCATIONS

TYPE_3
4 LOCATIONS

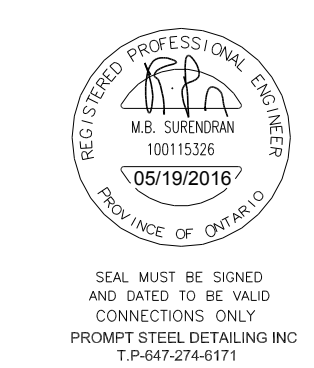


TYPE_4
2 LOCATIONS

TYPE_5
2 LOCATIONS

- STRUCTURAL STEEL NOTES:
- ALL STRUCTURAL STEEL SHALL CONFORM TO CSA STANDARD G40.21
 - ALL STRUCTURAL STEEL USED 300W
 - HSS SECTIONS 350W, CLASS H
 - W & WWF SECTIONS 350W
 - ALL BOLTS ARE HIGH STRENGTH BOLTS COMPLYING WITH ASTM A325N BOLTS.
 - ANCHOR BOLTS ARE GRADE A307

- NOTES:
- TOP OF OF FINISH GRADE (270.00)m IS REFERED AS DATUM (0.00)m.
 - U/S OF B.PL. DENOTES UNDER SIDE OF BASE PLATE ELEVATION.
 - ALL U/S BASE PLATE ELEVATIONS ARE REFERED FROM FINISHED DATUM REFERENCE ELEVATION.
 - V-B DENOTES VERTICAL BRACES



B	For Field Use	05/19/2016
A	For Approval	05/03/2016
REV	DESCRIPTION	DATE

GSB STEEL LIMITED
Architectural Metal Fabrication
91 Romina Drive Vaughan ON L4K 4Z9
T 416-261-1314 F 416-261-1315
E gsbsteel@gsbsteel.com W www.gsbsteel.com

PROJECT:	190 INDUSTRIAL PARKWAY SOUTH
LOCATION:	AURORA, ONTARIO
DETAIL OF:	ANCHOR BOLT SETTING PLAN
CONTRACTOR:	TRUMBLY HAMPTON DESIGN BUILD INC.
DRAWN BY:	MST
CHECKED BY:	BSU
SHEET NO.	AB1
JOB #	1244