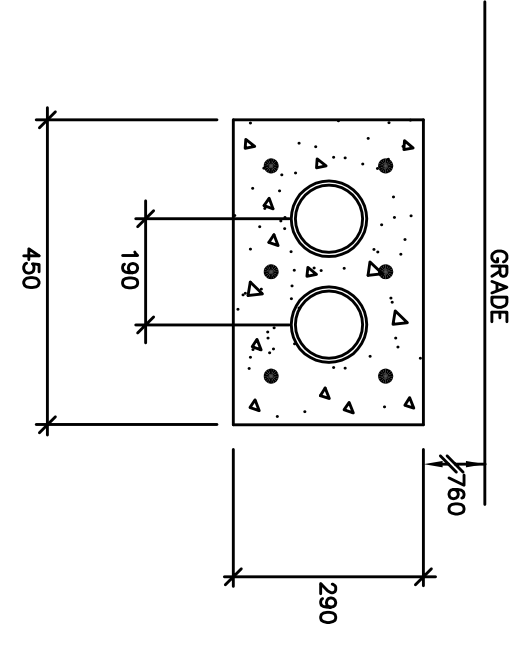
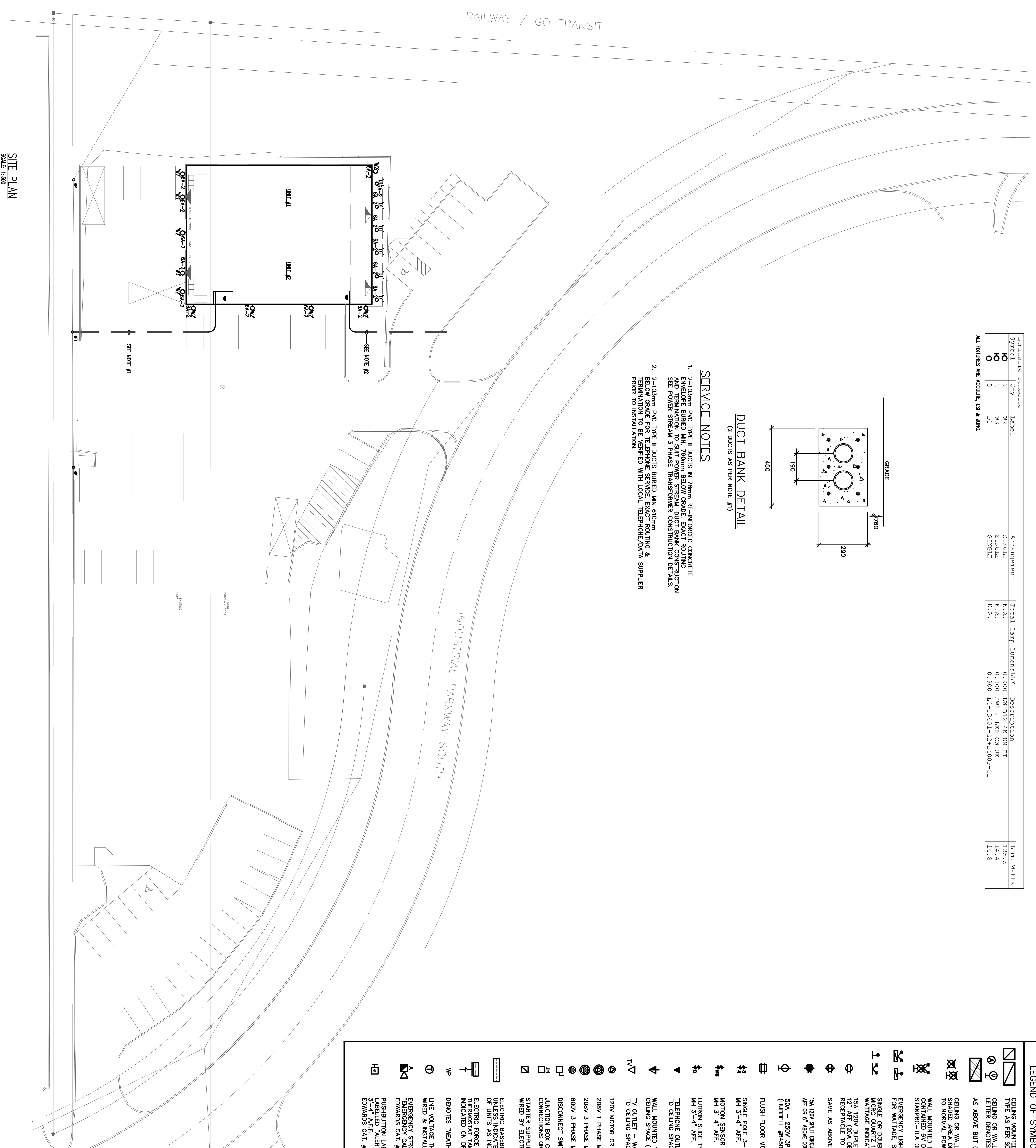


Symbol	Qty	Label	Arrangement	Total Lamp Lumens	Description	Lum. Watts
⊙	9	W2	SINGLE	N.A.	N.A.	135.5
⊙	2	W3	SINGLE	N.A.	N.A.	14.4
⊙	3	D1	SINGLE	N.A.	N.A.	14.8

ALL FIXTURES ARE ACQUITE LS & JMO.



- SERVICE NOTES**
- 2-103mm PVC TYPE II DUCTS IN 78mm RE-INFORCED CONCRETE ENVELOPE BURIED MIN. 760mm BELOW GRADE. EXACT ROUTING AND REMAINING TO SUIT POWER STREAM. DUCT BANK CONSTRUCTION SEE POWER STREAM & PHASE TRANSFORMER CONSTRUCTION DETAILS.
 - 2-103mm PVC TYPE II DUCTS BURIED MIN 610mm BELOW GRADE FOR TELEPHONE SERVICE. EXACT ROUTING & PROPOSED WORK TO BE SERVED WITH LOCAL TELEPHONE/DATA SUPPLIER PRIOR TO INSTALLATION.



SITE PLAN
SCALE 1:300

LEGEND OF SYMBOLS

	CEILING MOUNTED FLUORESCENT FIXTURE. INSCRIBED LETTER DENOTES TYPE AS PER SCHEDULE.
	CEILING OR WALL MOUNTED INCANDESCENT OR HID. FIXTURE. INSCRIBED LETTER DENOTES TYPE AS PER SCHEDULE.
	AS ABOVE BUT ON NIGHT LIGHT CIRCUIT.
	CEILING OR WALL MOUNTED EXIT SIGN. FACE LIGHT FIXTURE. LED SERIES. SHADDED AREA DENOTES REQUIRED FACE. STARPRO-TLA OR EQUAL. CONNECTED TO NORMAL POWER AND 12V DC EMERGENCY POWER. (GREEN RUNNING MAN)
	WALL MOUNTED EXIT LIGHT SIMILAR TO ABOVE EXCEPT C/W SELF-CONTAINED BY DC EMERGENCY BATTERY PACK AND 2-12W QUARTZ HALOGENS STARPRO-TLA OR EQUAL. (GREEN RUNNING MAN)
	EMERGENCY LIGHTING UNIT 120V, 1 DC. SEE DRAWINGS FOR WATTAGE. STARPRO-TLA OR EQUAL.
	SINGLE OR DOUBLE ENDITE EMERGENCY LAMPHEADS WALL MOUNTED MICRO QUARTZ 12V DC LAMP/SEE DRAWINGS FOR WATTAGE WATTAGE INDICATED REPRESENT WATTAGE FOR EACH HEAD
	15A 120V DUPLEX U-GROUND RECEPTACLE C/W MATCHING COVERPLATE. MH 12" AFF (20A DENOTES 20A RATING) (1/2 DENOTES ISOLATED GROUND) RECEPTACLE TO BE ORANGE IN COLOR.
	SAME AS ABOVE EXCEPT MH 3"-6" AFF OR 6" ABOVE COUNTER.
	15A 120V SPLIT CIRCUIT DUPLEX U-GROUND RECEPTACLE C/W MATCHING COVERPLATE. MOUNTING HEIGHT 3'-6" AFF OR 6" ABOVE COUNTER.
	50A-250V 3P-4W GROUNDED SINGLE RECEPTACLE WALL MOUNTED (HUBBELL #8450 EIMAC 15-50S) 42" AFF.
	FLUSH FLOOR MOUNTED RECEPTACLE
	SINGLE POLE 3-WAY OR 4-WAY TOGGLE SWITCH C/W MATCHING COVERPLATE MH 3'-4" AFF.
	MOTION SENSOR WATTSTOPPER OR EQUAL C/W MATCHING COVERPLATE MH 3'-4" AFF.
	LUTRON SLIDE TYPE DIMMER TO BE RATED FOR 1600W C/W MATCHING COVERPLATE MH 3'-4" AFF.
	TELEPHONE OUTLET - WALL MOUNTED (PROVIDE 3/4" C FROM EACH OUTLET TO CEILING SPACE)
	WALL MOUNTED TEL/DATA OUTLET. 12" AFF. EXTEND 3/4" UP TO CEILING SPACE (F-INDICATES FLUSH FLOOR MOUNTED)
	TV OUTLET - WALL MOUNTED (PROVIDE 3/4" C FROM EACH OUTLET TO CEILING SPACE)
	120V MOTOR OR POWER OUTLET AS INDICATED ON DRAWINGS.
	208V 1 PHASE MOTOR OR POWER OUTLET AS INDICATED ON DRAWINGS.
	208V 3 PHASE MOTOR OR POWER OUTLET AS INDICATED ON DRAWINGS.
	600V 3 PHASE MOTOR OR POWER OUTLET AS INDICATED ON DRAWINGS.
	DISCONNECT SWITCH SIZED AS INDICATED ON DRAWINGS OR TO SUIT.
	JUNCTION BOX CEILING MOUNTED C/W CIRCUIT AS NOTED FOR FUTURE POWER CONNECTIONS OR AS NOTED ON DRAWINGS.
	STARTER SUPPLIED BY MECHANICAL CONTRACTOR BUT INSTALLED AND WIRED BY ELECTRICAL CONTRACTOR.
	ELECTRIC BASEBOARD HEATER C/W BUILT-IN THERMOSTAT. ELECTRIC BASEBOARD HEATER C/W BUILT-IN THERMOSTAT & VOLTAGE OF UNITS AS INDICATED ON DRAWINGS.
	ELECTRIC FORCE FLOW HEATER C/W BUILT-IN THERMOSTAT TAMPERSHOOF. STELPRO. WATTAGE & VOLTAGE OF UNITS AS INDICATED ON DRAWINGS.
	DENOTES "WEATHERPROOF"
	LINE VOLTAGE THERMOSTAT SUPPLIED BY MECHANICAL CONTRACTOR WIRING & INSTALLED BY ELECTRICAL CONTRACTOR.
	EMERGENCY STROBE/ALARM
	EMERGENCY CALL
	EDWARDS CAT #57A-6538-05
	FIRE ALARM PULL STATION LABELLED "FIRE ALARM PULL STATION"
	FIRE ALARM PULL STATION LABELLED "FIRE ALARM PULL STATION" WITH "ALERT" LABELLED ALERT EDWARDS CAT #57A-7813

The contractor shall check all annotations and other data from this list and report any discrepancies to the architect before proceeding. Do not scale drawing.

NO.	REVISIONS	DATE
1	ISSUED FOR REVIEW	2015-01-28
2	ISSUED FOR PERMITS	2015-05-27
3	RE-ISSUED FOR PERMITS	2015-07-15
4	ISSUED FOR PRICING	2015-08-10

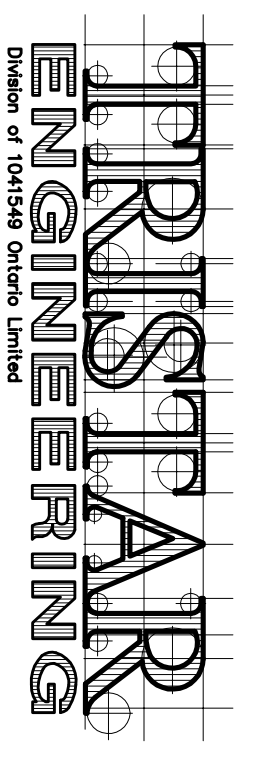
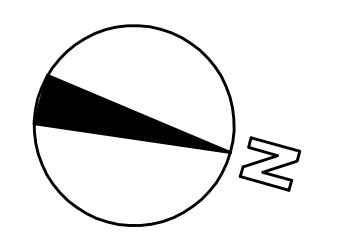
Owner
JOCHELI INVESTMENTS LIMITED

Drawing Title
SITE PLAN & DETAILS

Project Title
NEW WAREHOUSE

200 INDUSTRIAL PARKWAY SOUTH

AURORA



Approved	Checked	Drawn By	File No.
J.P.	J.P.	K.B.	2015-015

Scale: 1:300 Date: 2014-09-10

Drawing Number: E-1 Revision Number: