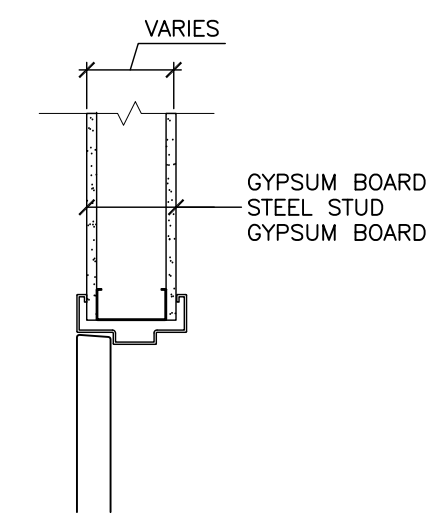
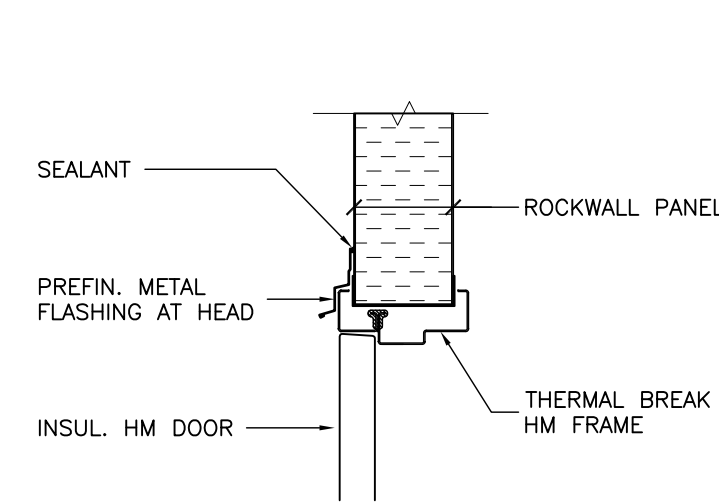


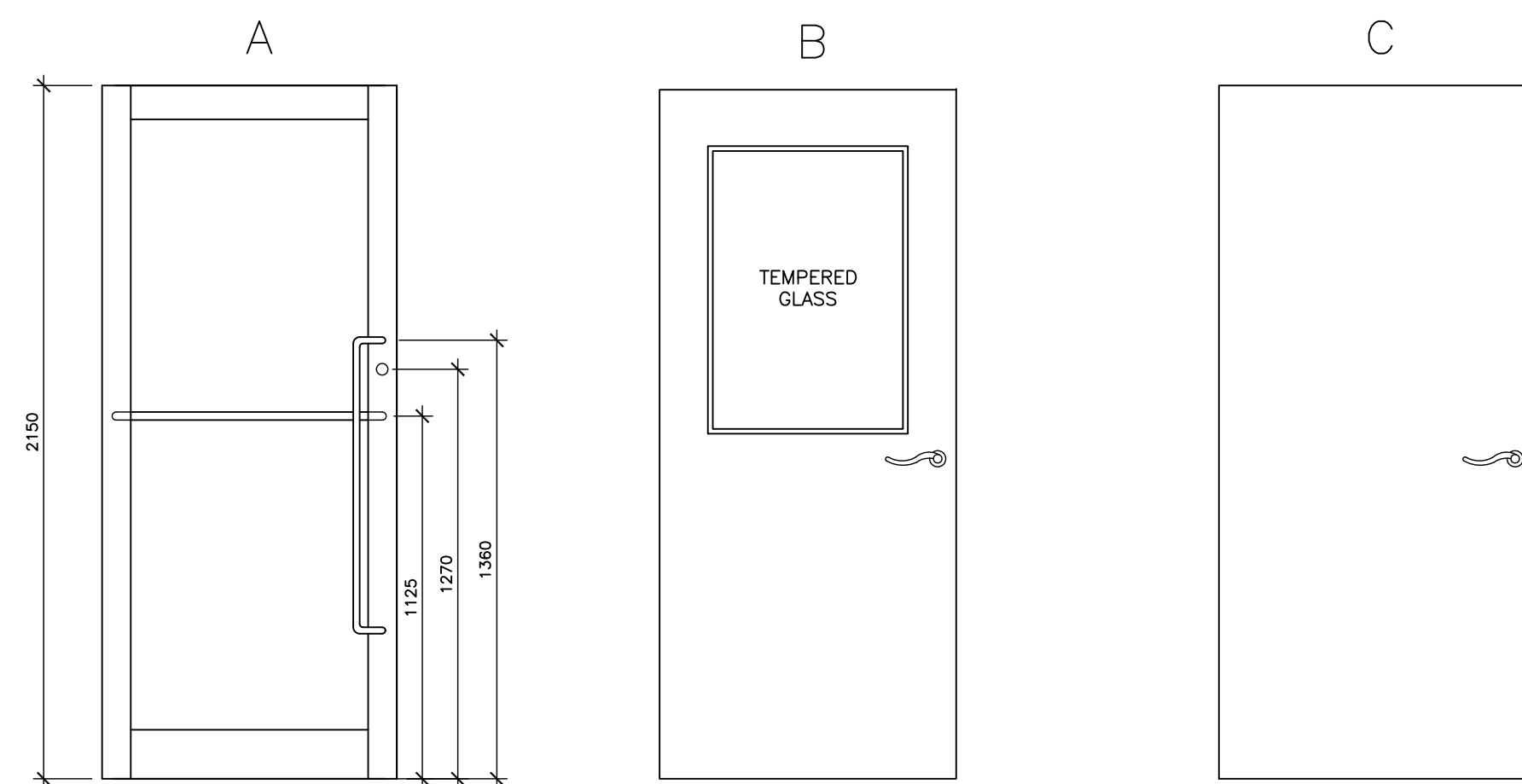
TYPE 1
HEAD/JAMB



TYPE 2
HEAD/JAMB



4 DOOR FRAME TYPES
1:10



D

3 DOOR TYPES
1:20

ROOM FINISH SCHEDULE

NO.	ROOM	FLOOR		BASE		WALLS		CEILING			REMARKS
		MAT'L	FIN.	MAT'L	HGT.	MAT'L	FIN.	MAT'L	FIN.	HGT.	
101	VESTIBULE	CONC.	PT1	PT1	150	GB	PAINT 1	G.B.	PAINT 6	2550	
102	GENERAL OFFICE	CONC.	PT2	PT2	150	GB	PAINT 2	A.T.	-	2700	
103	OFFICE	CONC.	PT2	PT2	150	GB	PAINT 2	A.T.	-	2700	
104	HALL	CONC.	PT2	PT2	150	GB	PAINT 2	A.T.	-	2700	
105	WASHROOM	CONC.	PT2	PT2	150	GB	PAINT 3	A.T.	-	2700	
106	WASHROOM	CONC.	PT2	PT2	150	GB	PAINT 3	A.T.	-	2700	
107	LUNCH/STORAGE	CONC.	PT2	PT2	150	GB	PAINT 4	A.T.	-	2700	
108	WAREHOUSE	CONC.	SEALER	*RUBBER	150	ROCKWALL GB	PREFIN PAINT 5	DECK	-	±4900	* RUBBER BASE ON GYPSUM BOARD WALL ONLY.
109	ELECTRICAL ROOM	CONC.	SEALER	*RUBBER	150	ROCKWALL GB	PREFIN *PAINT 5	G.B.	PAINT 5	**2251	* PAINT GYP. BD. ROOF SAME AS WALL ** SLOPED CEILING, ±2251 AT LOW POINT

LEGEND:

A.T. ACOUSTIC TILE (TO BE DETERMINED)
G.B. GYPSUM BOARD
PAINT(1-6) COLOURS TO BE DETERMINED
PT1&2 PORCELAIN TILE (TO BE DETERMINED)
PREFIN PRE-FINISHED
RUBBER BASE TO BE DETERMINED

NOTES:

1. LEVEL FLOOR WITH LATEX FILLER PRIOR TO FLOOR FINISH.

2 ROOM FINISH SCHEDULE
NTS

DOOR AND FRAME SCHEDULE

DOOR NO.		DOOR				FRAME			F.R.R.	CLOSER	REMARKS			
		SIZE				MAT'L	CORE	GLAZING						
		WIDTH	HGT.	THICK.	TYPE									
101	VESTIBULE 101	1050	2150	45	A	ALU	INSUL	TEMPERED	ALU	-	-	-	●	THERMAL BREAK SECTIONS, WIDE STILE AUTOMATIC DOOR OPERATOR
102	GENERAL OFFICE 102	1050	2150	45	A	ALU	INSUL	TEMPERED	ALU	-	-	-	●	WIDE STILE AUTOMATIC DOOR OPERATOR
103	OFFICE 103	950	2150	45	B	HM	INSUL	TEMPERED	HM	-	1	-	●	ACOUSTIC INSUL
104	HALL 104	950	2150	45	B	HM	INSUL	TEMPERED	HM	-	1	-	●	WEATHERSTRIPS (ACOUSTIC) ACOUSTIC INSUL
105	WASHROOM 105	950	2150	45	C	HM	INSUL	-	HM	-	1	-	●	ACOUSTIC INSUL AUTOMATIC DOOR OPERATOR
106	WASHROOM 107	950	2150	45	C	HM	INSUL	-	HM	-	1	-	●	ACOUSTIC INSUL
107	LUNCH/STORAGE 107	950	2150	45	B	HM	INSUL	TEMPERED	HM	-	1	-	●	ACOUSTIC INSUL
108	HALL 104	950	2150	45	B	HM	INSUL	TEMPERED	HM	-	1	-	●	WEATHERSTRIPS (ACOUSTIC) ACOUSTIC INSUL
109	ELECTRICAL ROOM 109	950	2150	45	C	HM	INSUL	-	HM	-	2	-	●	THERMAL BREAK FRAME WEATHERSTRIPS
110	WAREHOUSE 108	950	2150	45	C	HM	INSUL	-	HM	-	2	-	●	THERMAL BREAK FRAME WEATHERSTRIPS
111	WAREHOUSE 108	3600	3600	45	D	HM	INSUL	-	-	-	-	-	●	OVERHEAD DOOR, U-VALUE 0.7 MAX. WEATHERSTRIPS
112	WAREHOUSE 108	3600	3600	45	D	HM	INSUL	-	-	-	-	-	●	OVERHEAD DOOR, U-VALUE 0.7 MAX. WEATHERSTRIPS
113	WAREHOUSE 108	950	2150	45	C	HM	INSUL	-	HM	-	2	-	●	THERMAL BREAK FRAME WEATHERSTRIPS
114	ELECTRICAL ROOM 109	950	2150	45	C	HM	-	-	HM	-	1	-	●	

LEGEND:

ALU ALUMINUM
FRR FIRE RESISTANCE RATING
FG FIREGLASS
HC HONEYCOMB
HM HOLLOW METAL
INSUL INSULATED
SC SOLID CORE

NOTES:

1. ALL CLOSERS TO COMPLY WITH OBC 2012 BARRIER FREE REQUIREMENTS.
2. DOOR HANDLE - LEVER UNLESS NOTED OTHERWISE.
3. EXTERIOR DOORS TO HAVE U-VALUE 0.7 MAXIMUM.
4. EXTERIOR DOORS TO HAVE THERMAL BREAK FRAME.

1 DOOR & FRAME SCHEDULE
NTS

The contractor shall check all dimensions and other data from the job and report any discrepancies to the architects before proceeding. Do not scale drawing.

1	ISSUED FOR BUILDING PERMIT	2016-03-02
2	ISSUED FOR TENDER	2016-05-05
3	ISSUED FOR CONSTRUCTION	2016-06-22
4	REISSUED FOR BUILDING PERMIT	2016-08-08
NO.	REVISIONS	DATE
1	AUTO DOOR OPERATOR ADDED	2016-06-22
2	ELEC. ROOM ADDED PER HYDRO REQUEST	2016-08-08

Owner
S. ACTON HOLDINGS LTD.
905 338 9253

Project Title
SCHEDULES

Project Title
NEW WAREHOUSE

1340 HEINE COURT BURLINGTON



Donald J. Caunter
Architect Limited

40 St. Clair Ave. East, Suite 302, Toronto, ON M4T 1M9 (416) 922-2040

Approved	DC	Checked	DC	Drawn By	WT
Scale	AS NOTED	Date	2015-03-16	File No.	116903
Drawing Number					Revision Number

A-601

R2