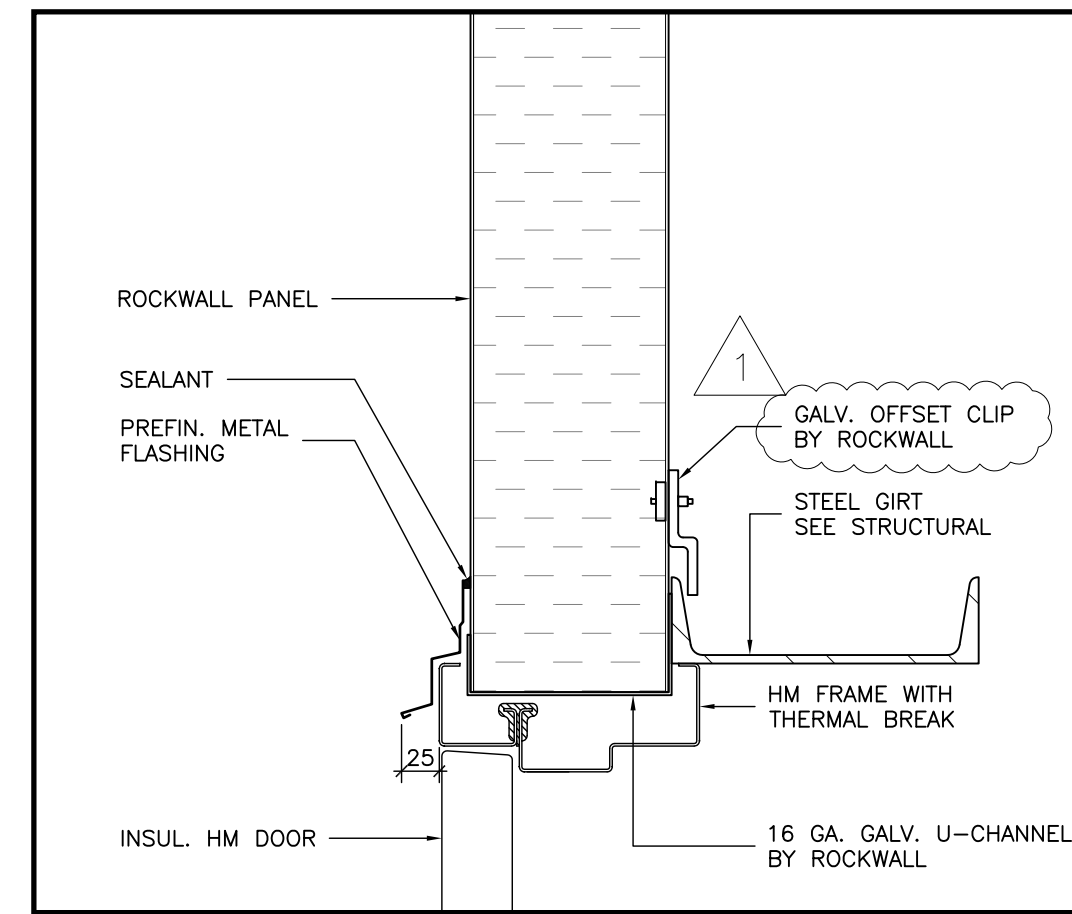
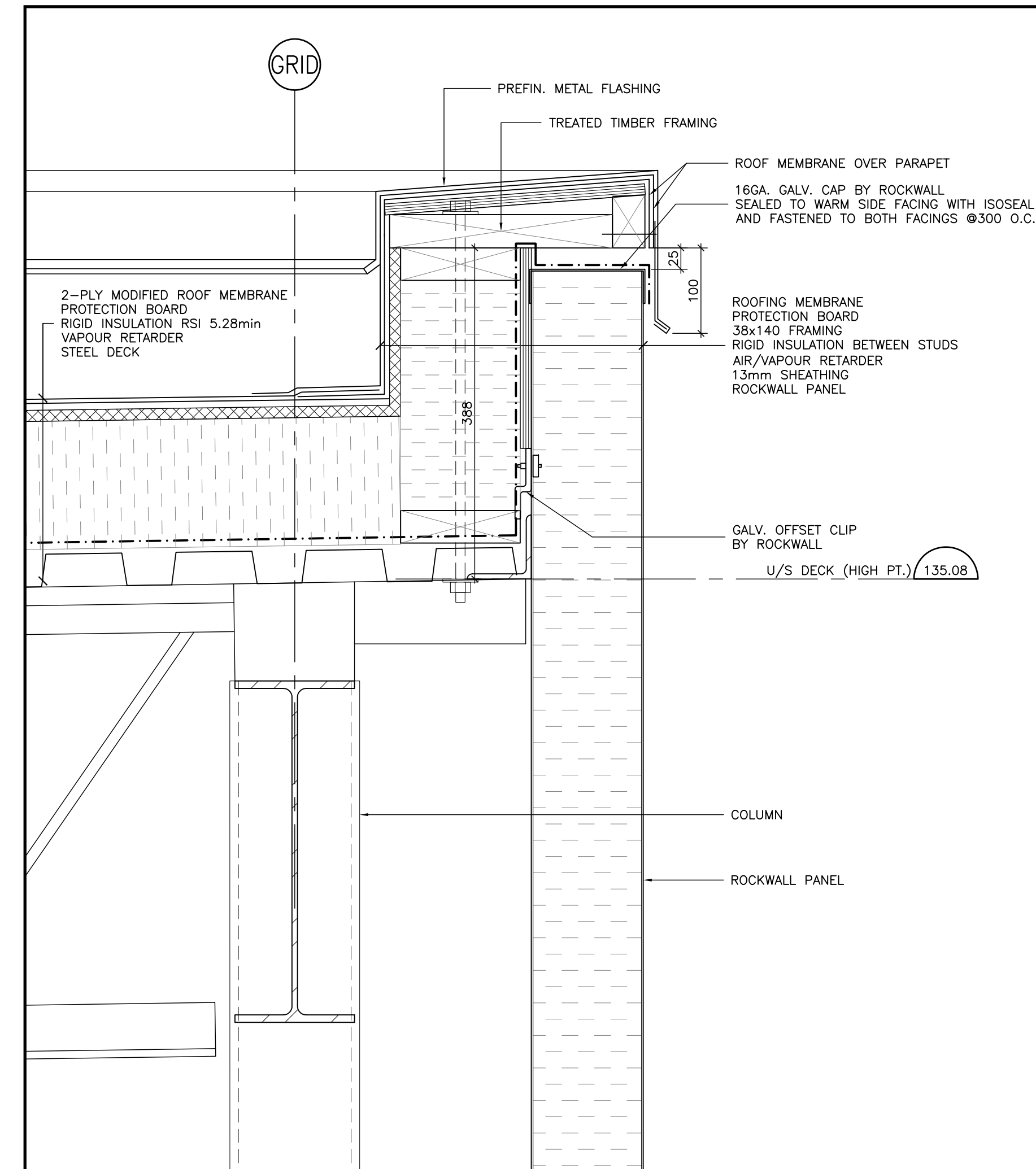


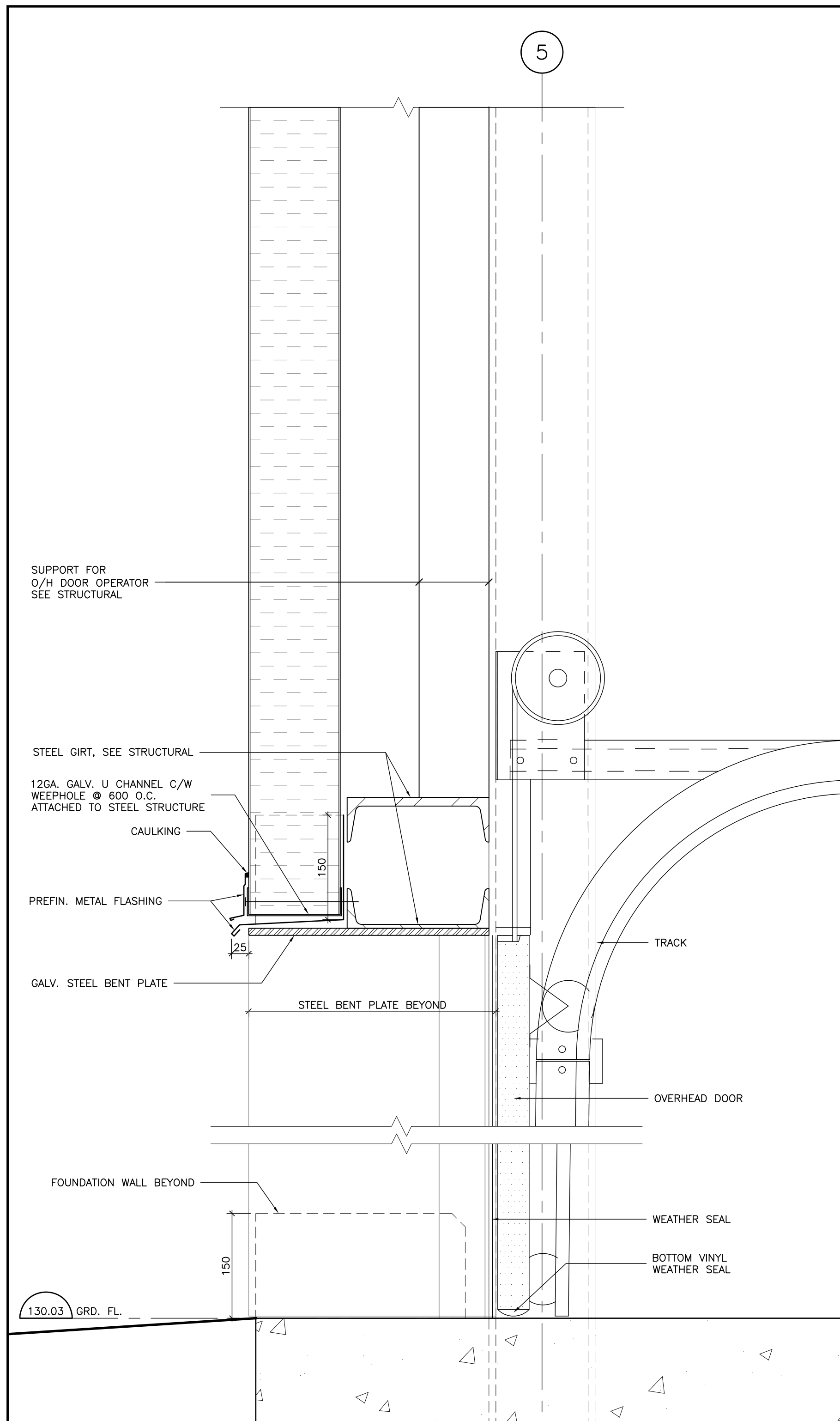
7 DETAIL-OVERHEAD DOOR
1:5



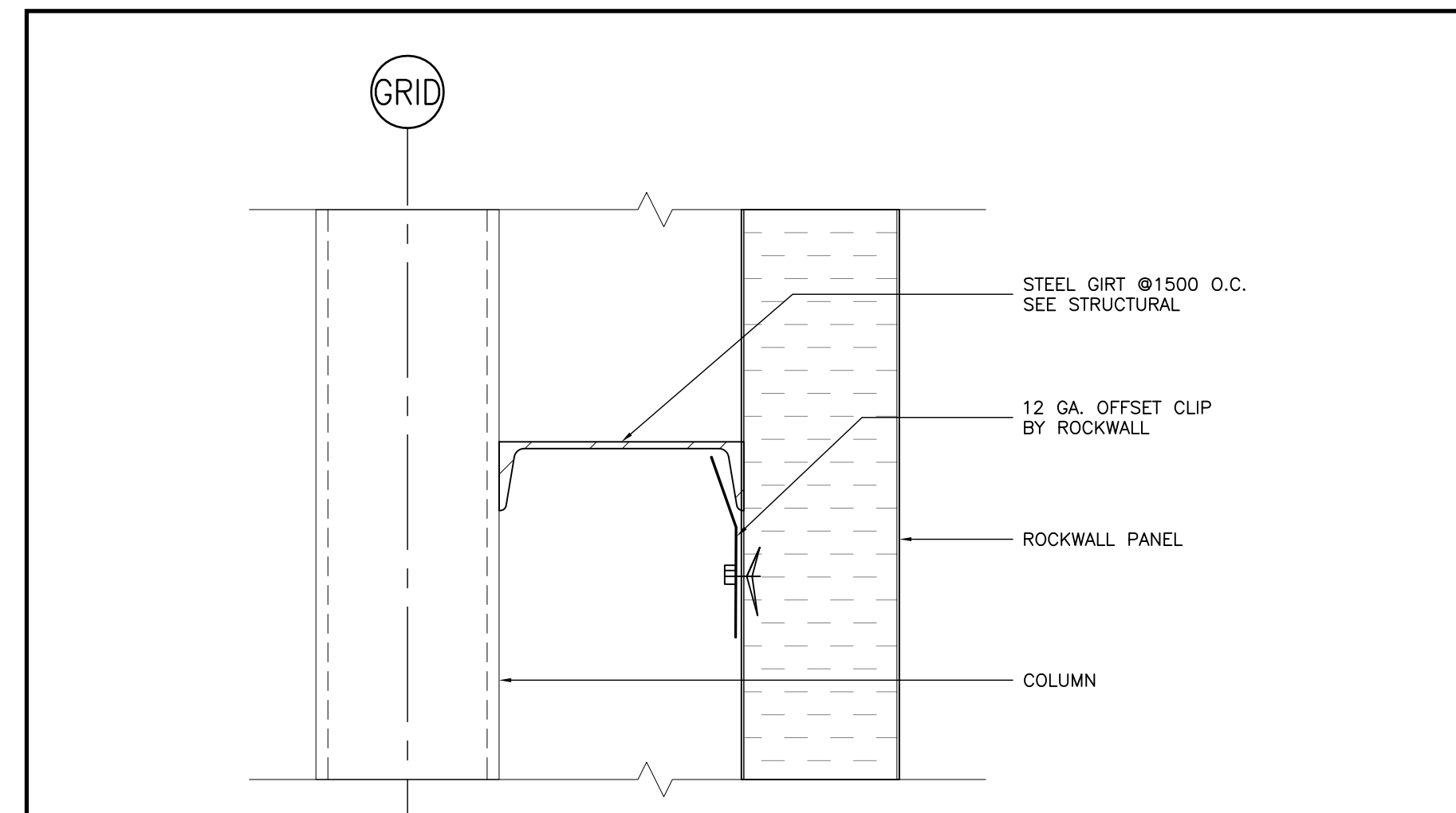
6 HEAD DETAIL-HM DOOR
1:5



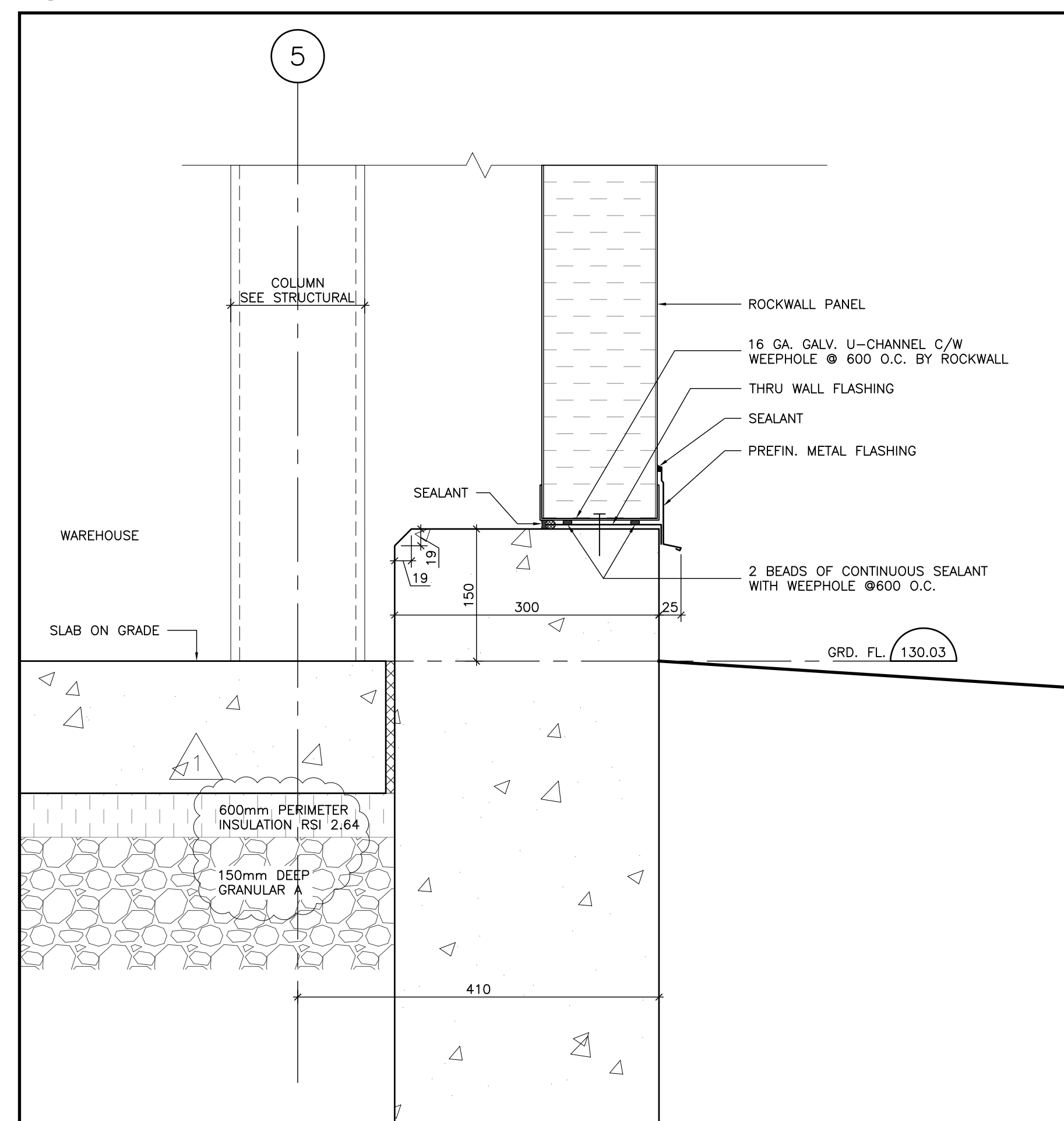
4 DETAIL-ROOF AT WAREHOUSE
1:5



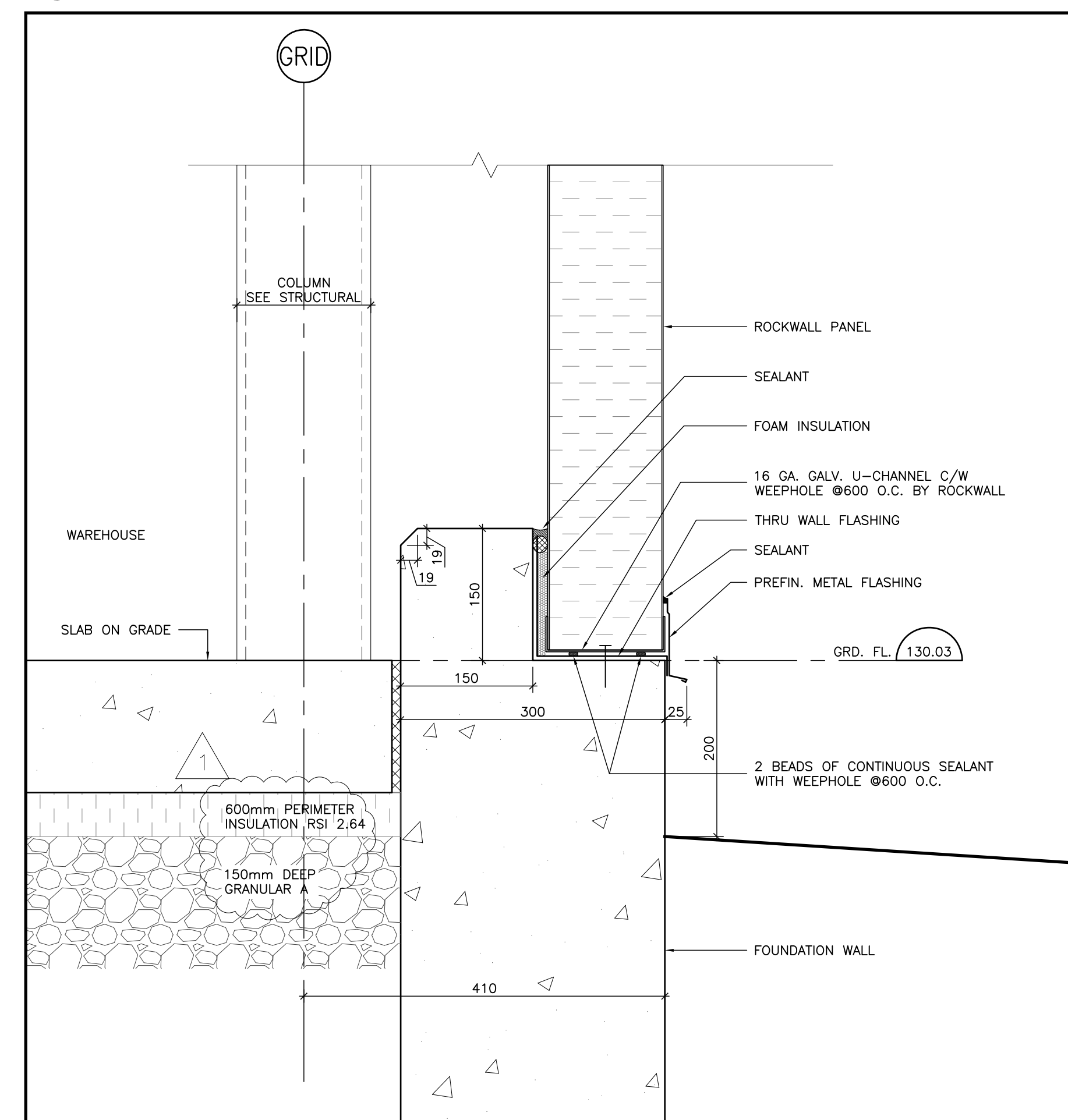
3 DETAIL-OVERHEAD DOOR
1:5



5 DETAIL-ROCKWALL PANEL AT MID GIRT
1:5



2 DETAIL-FOUNDATION AT WAREHOUSE
1:5



1 DETAIL-FOUNDATION AT WAREHOUSE
1:5

The contractor shall check all dimensions and other data from the job and report any discrepancies to the architects before proceeding. Do not scale drawing.

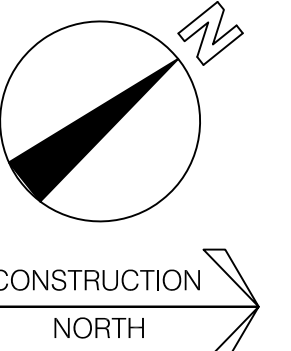
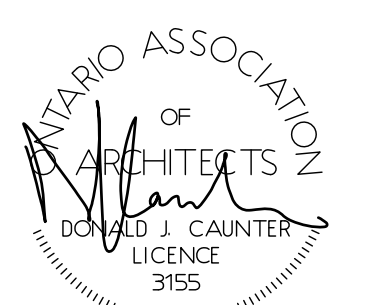
NO.	REVISIONS	DATE
1	ISSUED FOR BUILDING PERMIT	2016-03-02
2	ISSUED FOR TENDER	2016-05-05
3	ISSUED FOR CONSTRUCTION	2016-06-22
1	PERIMETER INSUL REV.	2016-06-22

Owner
S. ACTON HOLDINGS LTD.
905 338 9253

Drawing Title
DETAILS

Project Title
NEW WAREHOUSE

1340 HEINE COURT BURLINGTON



Donald J. Caunter
Architect Limited

40 St. Clair Ave. East, Suite 302, Toronto, ON M4T 1M9 (416) 922-2040

Approved	Checked	Drawn By
DC	DC	WT
Scale	Date	File No.
AS NOTED	2015-03-16	116903
Drawing Number	Revision Number	

A-502 R1