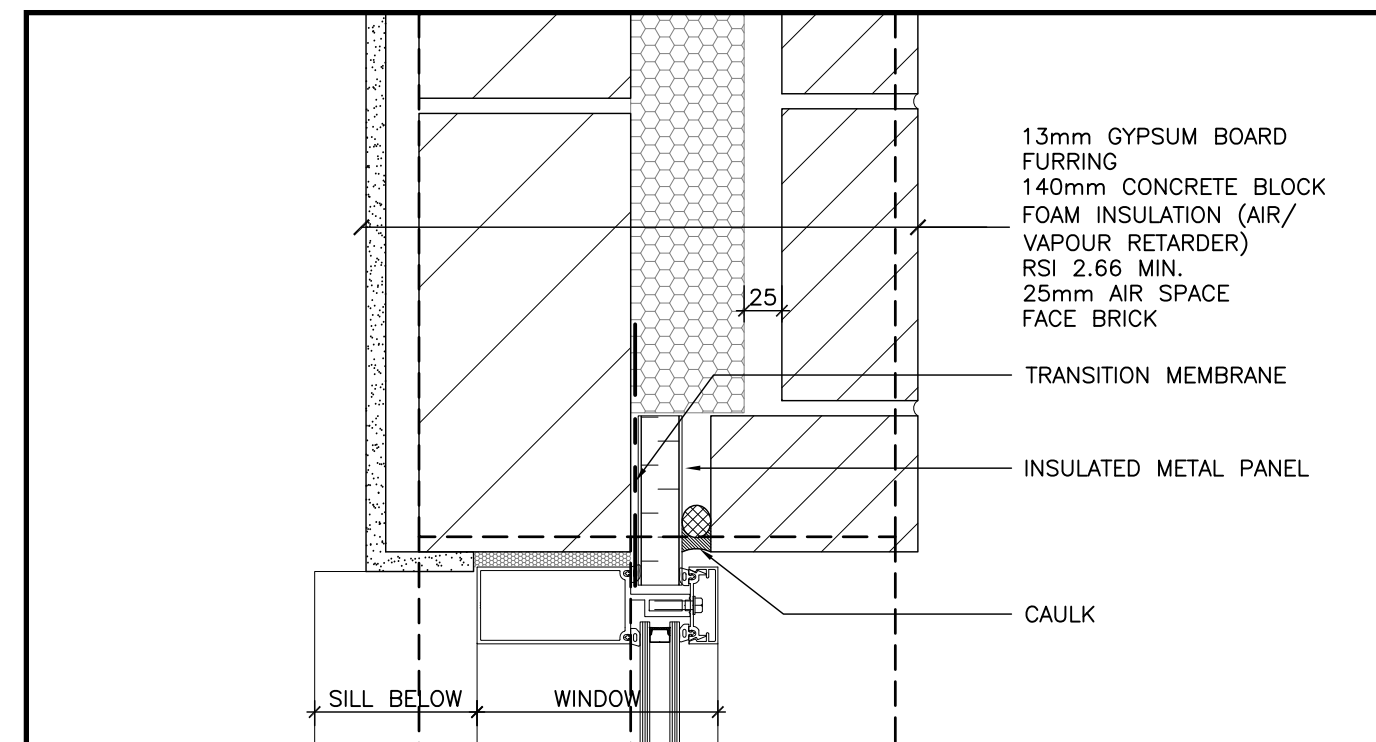
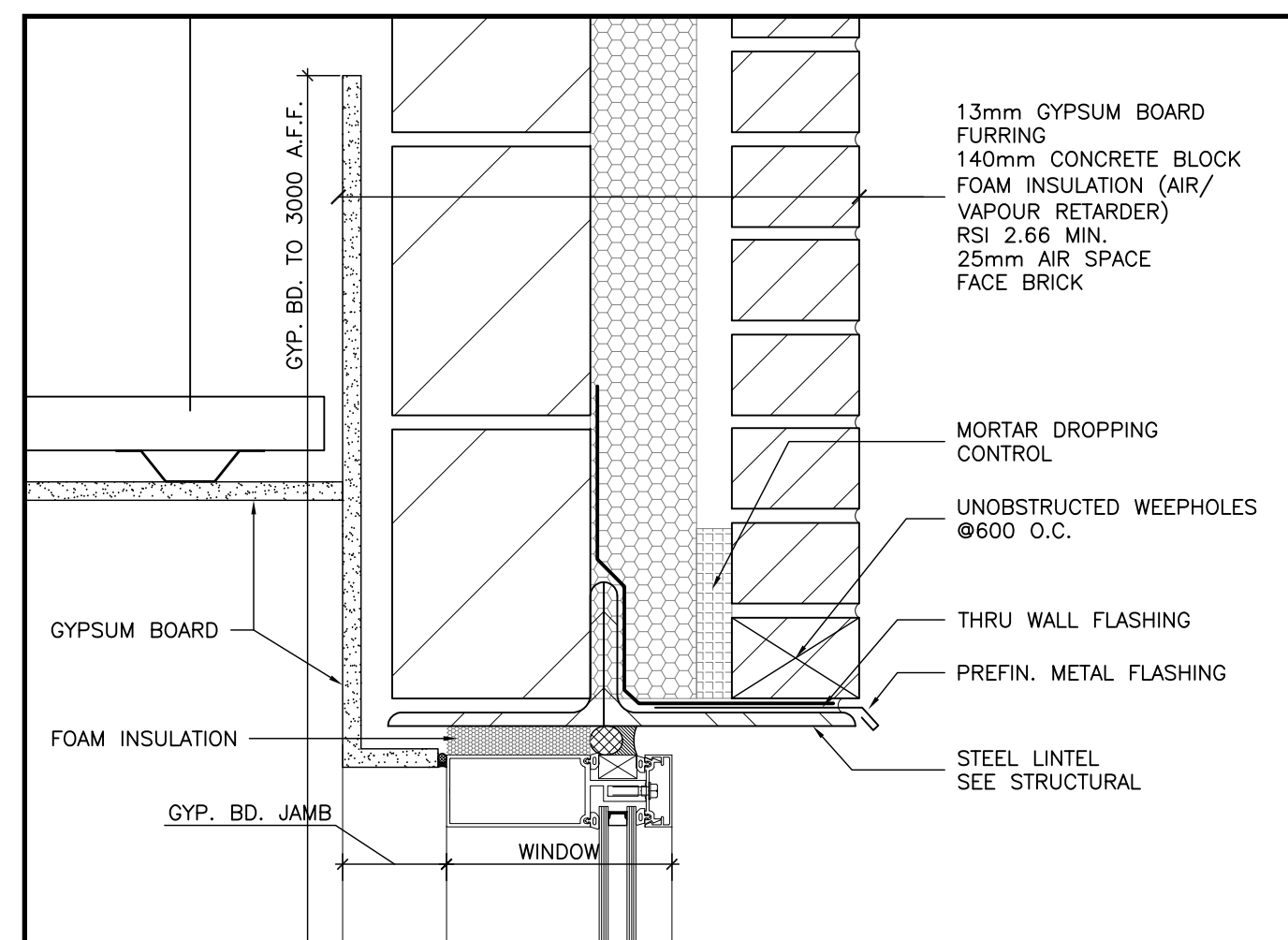


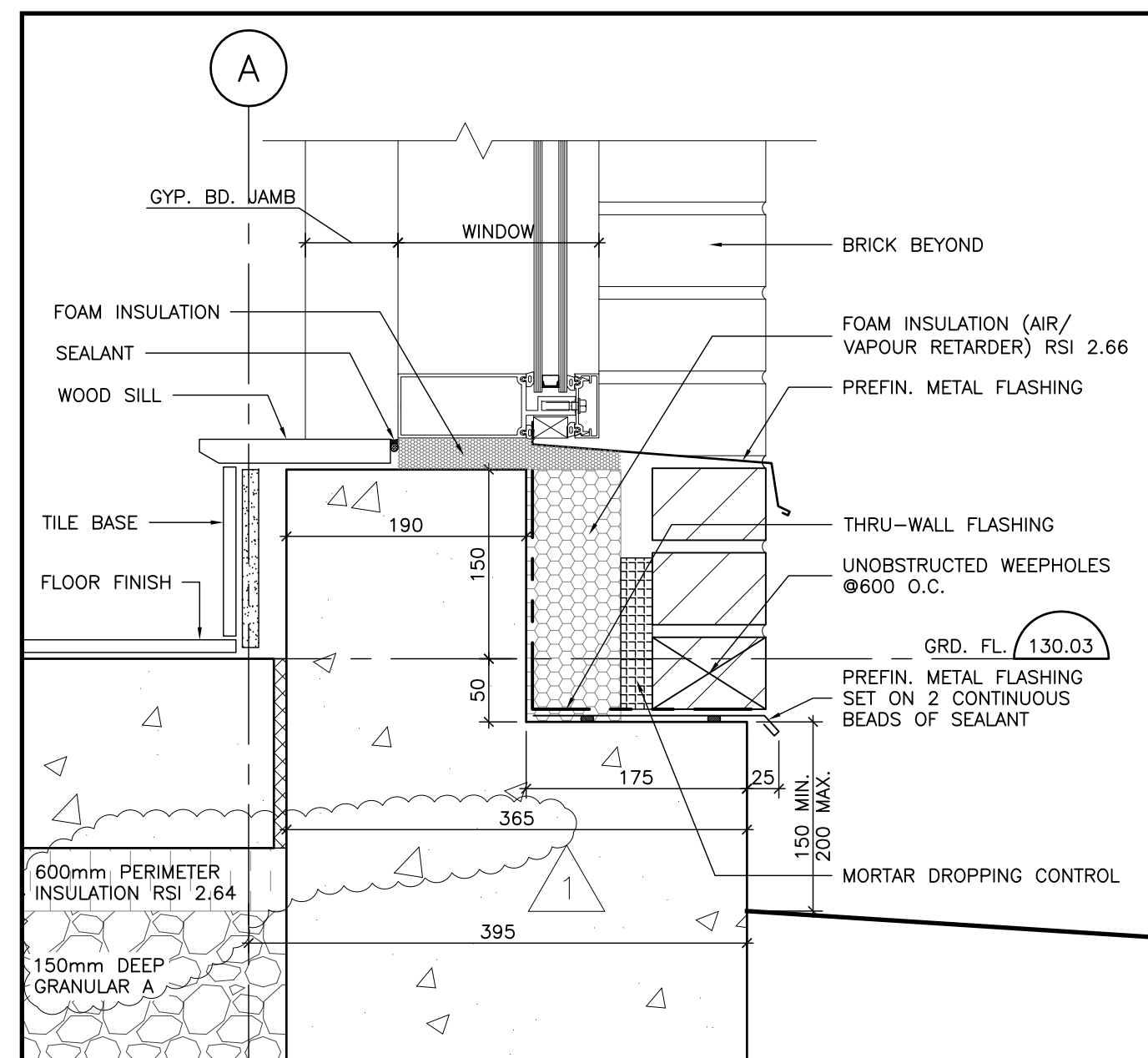
11 PLAN DETAIL—MOVEMENT JOINT (MJ)
1:5



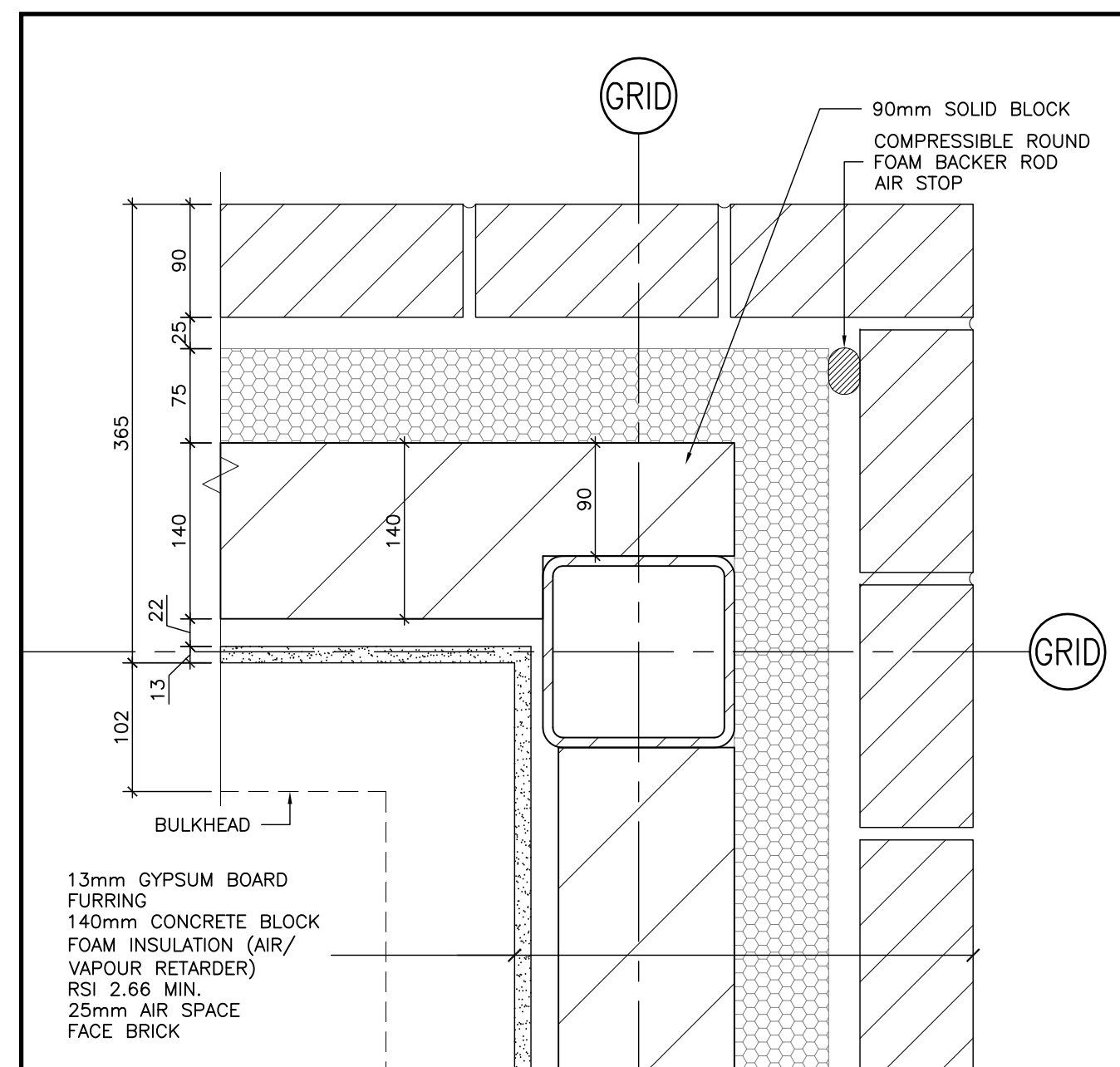
10 PLAN DETAIL—BRICK/CURTAIN WALL
1:5



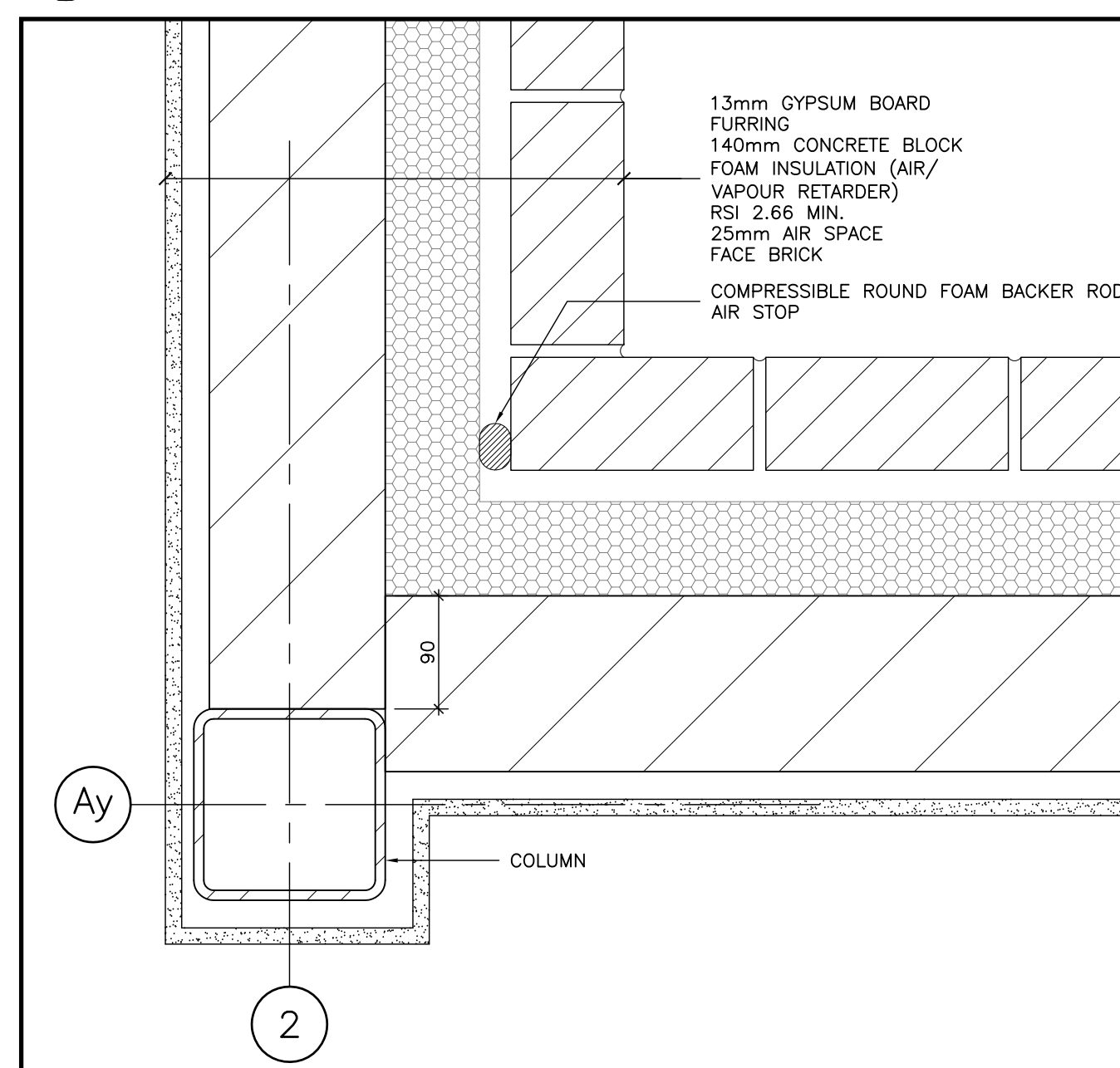
9 DETAIL—CURTAIN WALL HEAD AT OFFICE
1:5



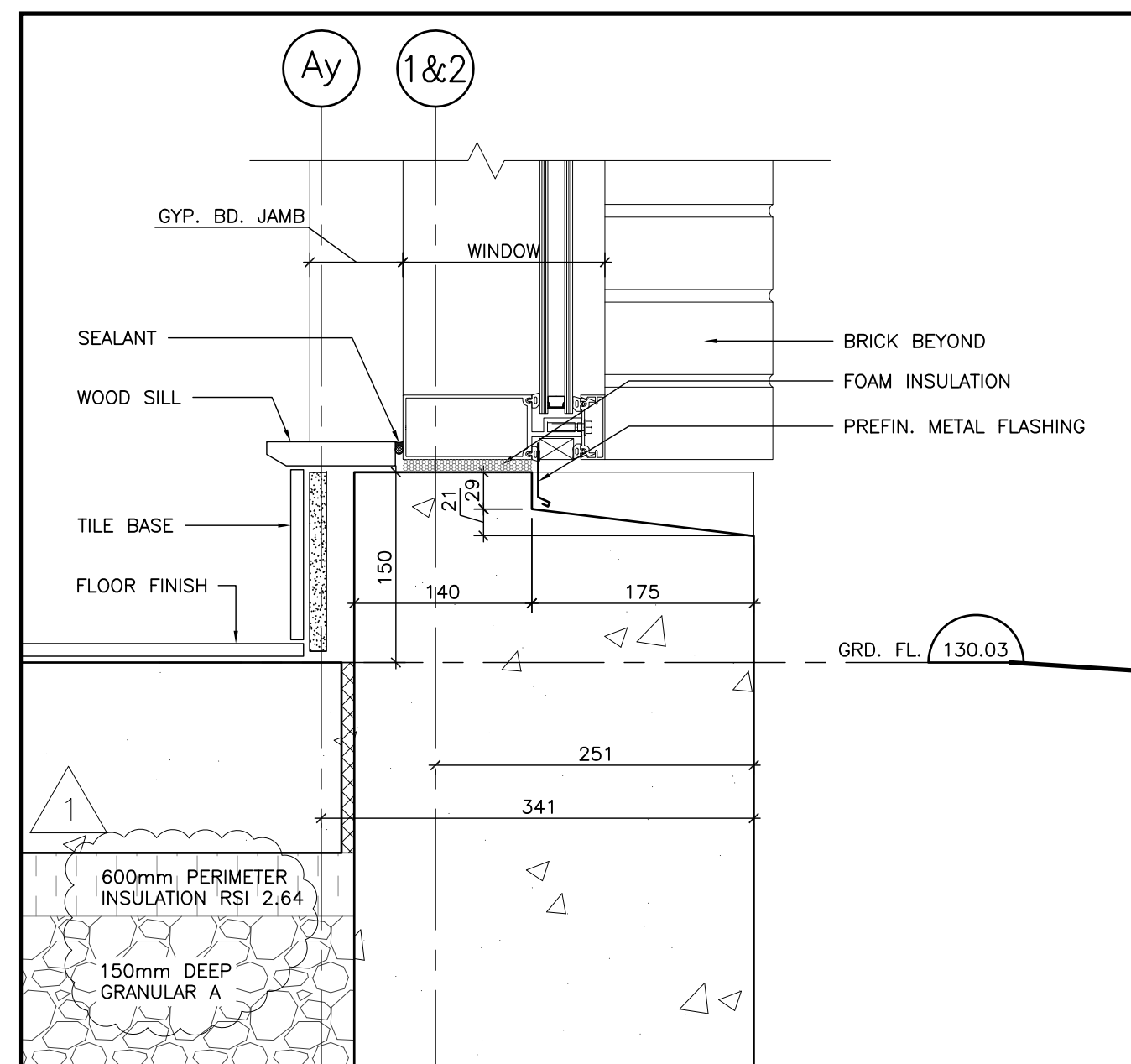
4 DETAIL—CURTAIN WALL SILL AT OFFICE
1:5



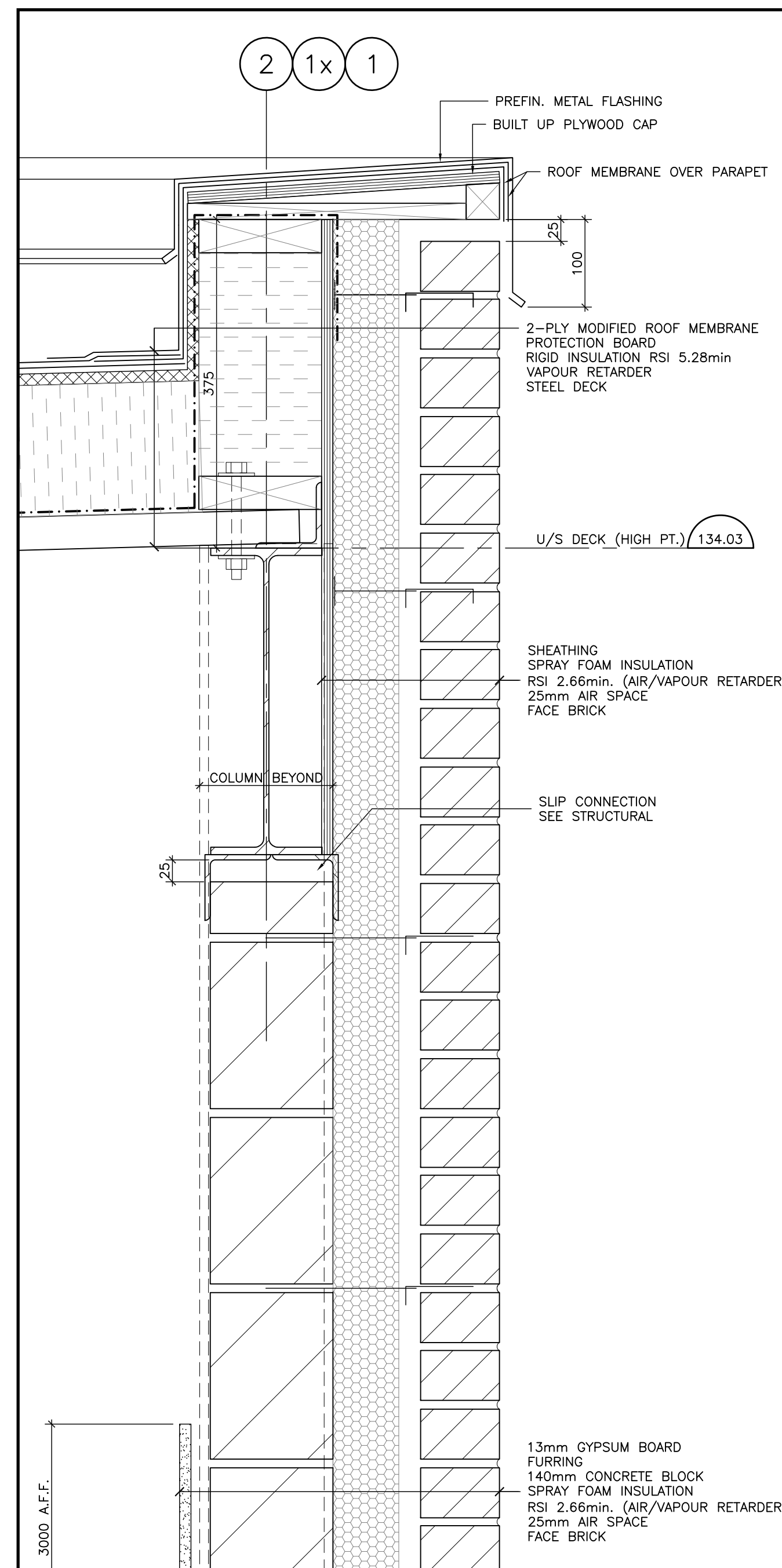
8 PLAN DETAIL—BRICK OUTSIDE CORNER
1:5



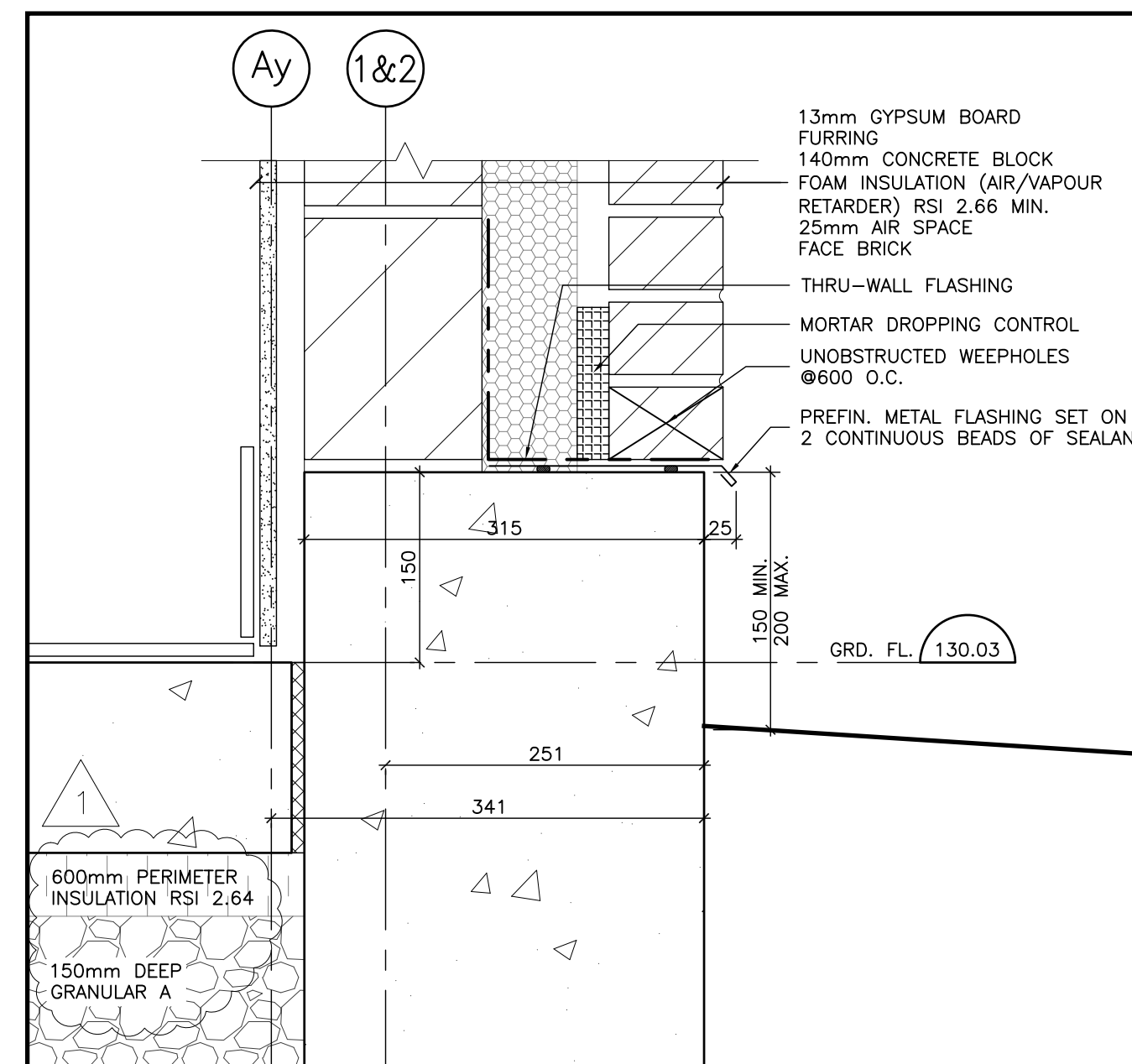
7 PLAN DETAIL—BRICK INSIDE CORNER
1:5



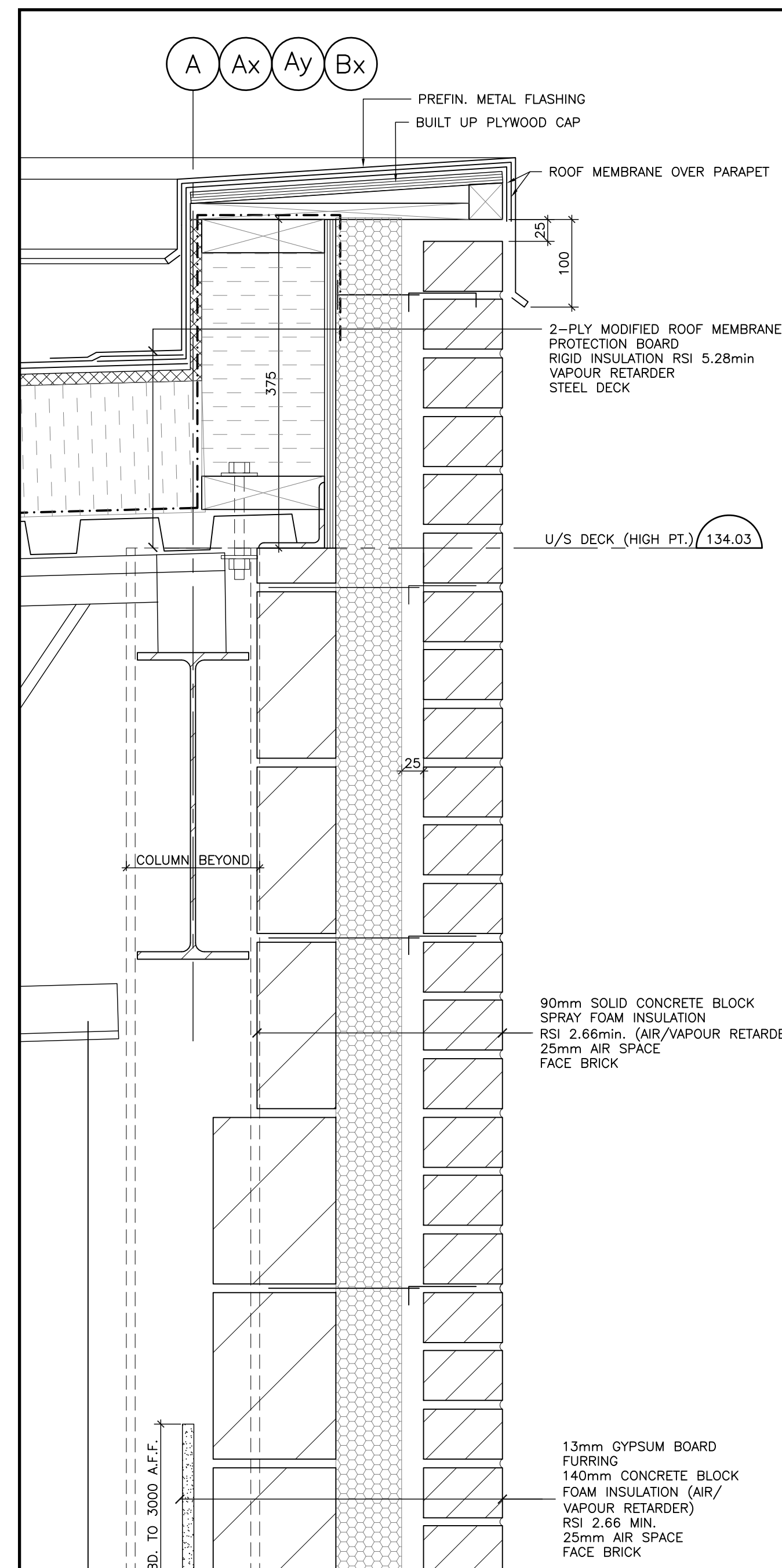
3 DETAIL—CURTAIN WALL SILL AT OFFICE
1:5



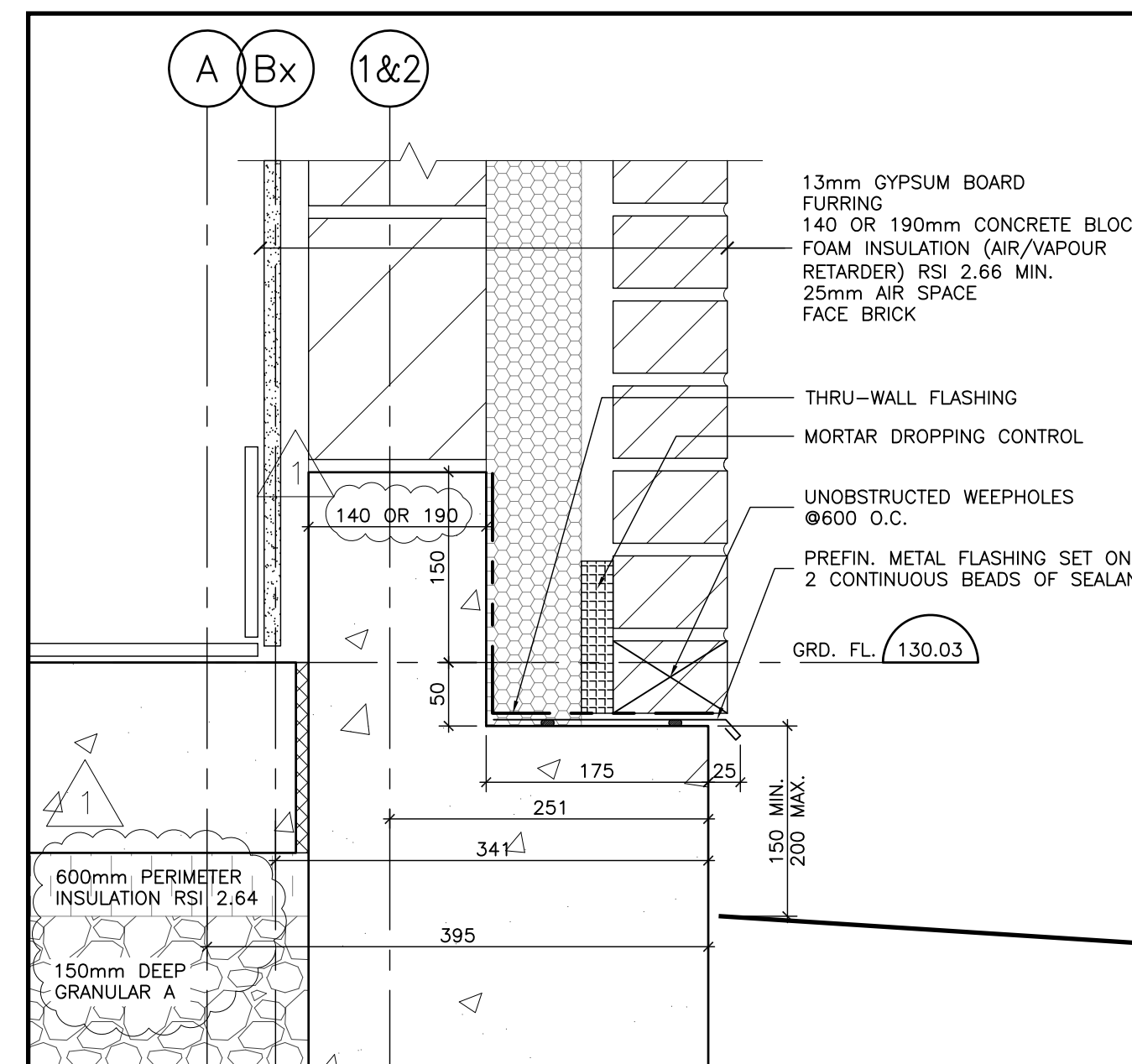
6 DETAIL—ROOF AT OFFICE
1:5



2 DETAIL—FOUNDATION AT OFFICE
1:5



5 DETAIL—ROOF AT OFFICE (FIRE RATED WALL)
1:5



1 DETAIL—FOUNDATION AT OFFICE
1:5

The contractor shall check all dimensions and other data from the job and report any discrepancies to the architects before proceeding. Do not scale drawing.

| | | |
|---|----------------------------|------------|
| 1 | ISSUED FOR BUILDING PERMIT | 2016-03-02 |
| 2 | ISSUED FOR TENDER | 2016-05-05 |
| 3 | ISSUED FOR CONSTRUCTION | 2016-06-22 |

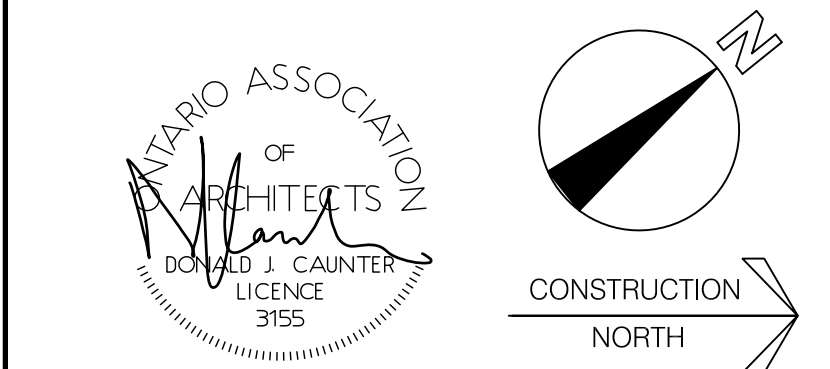
| NO. | REVISIONS | DATE |
|-----|-------------------------------------|------------|
| 1 | PERIMETER INSUL AND DIMENSIONS REV. | 2016-06-22 |

Owner
S. ACTON HOLDINGS LTD.
905 338 9253

Drawing Title
DETAILS

Project Title
NEW WAREHOUSE

1340 HEINE COURT BURLINGTON



Donald J. Caunter Architect Limited

40 St. Clair Ave. East, Suite 302, Toronto, ON M4T 1M9 (416) 922-2040

| | | | | | |
|----------------|----------|------|------------|-----------------|--------|
| Approved | Checked | DC | Drawn By | WT | |
| Scale | AS NOTED | Date | 2015-03-16 | File No. | 116903 |
| Drawing Number | | | | Revision Number | |

A-501 R1