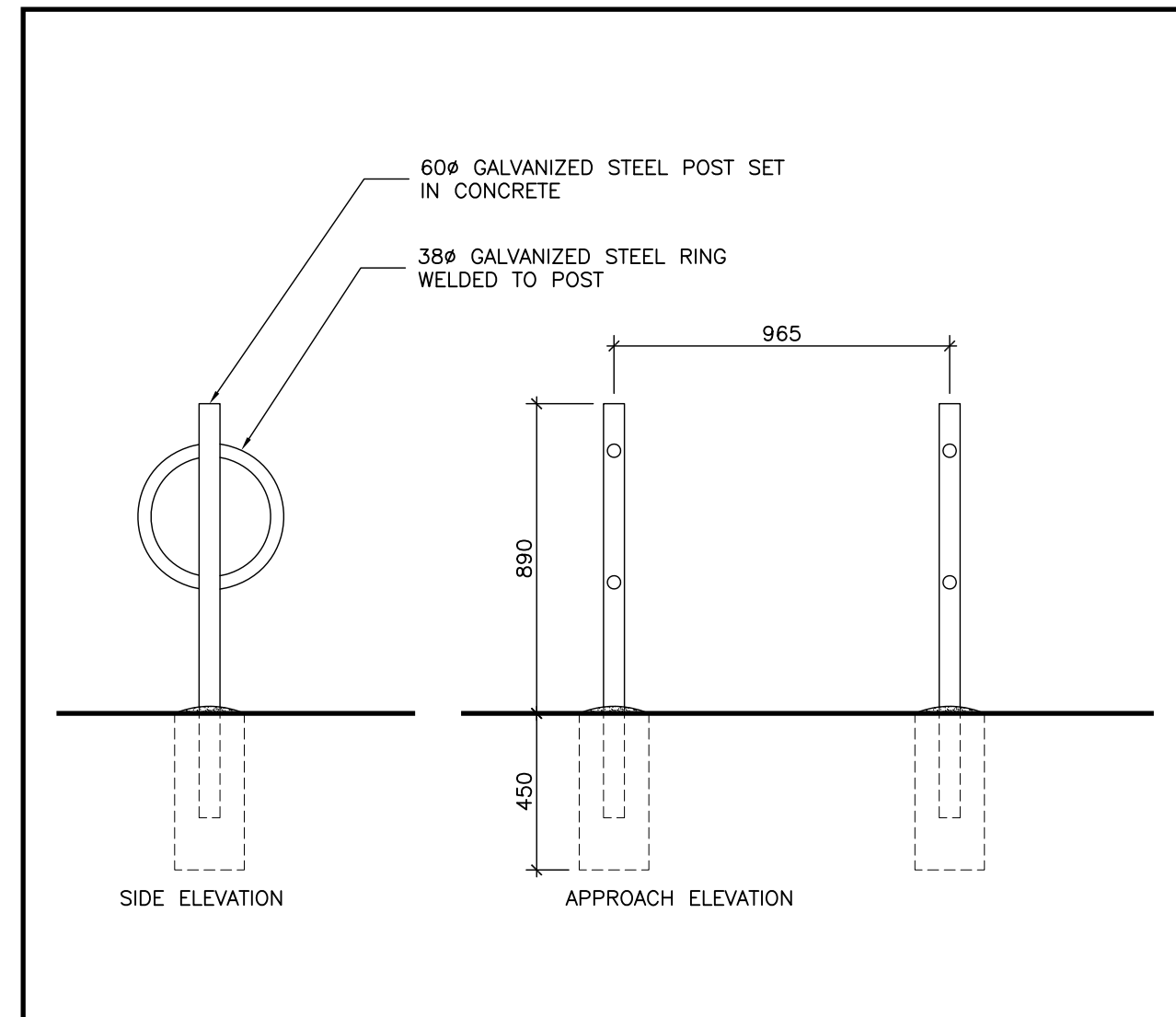


The contractor shall check all dimensions and other data from the job and report any discrepancies to the architects before proceeding. Do not scale drawing.

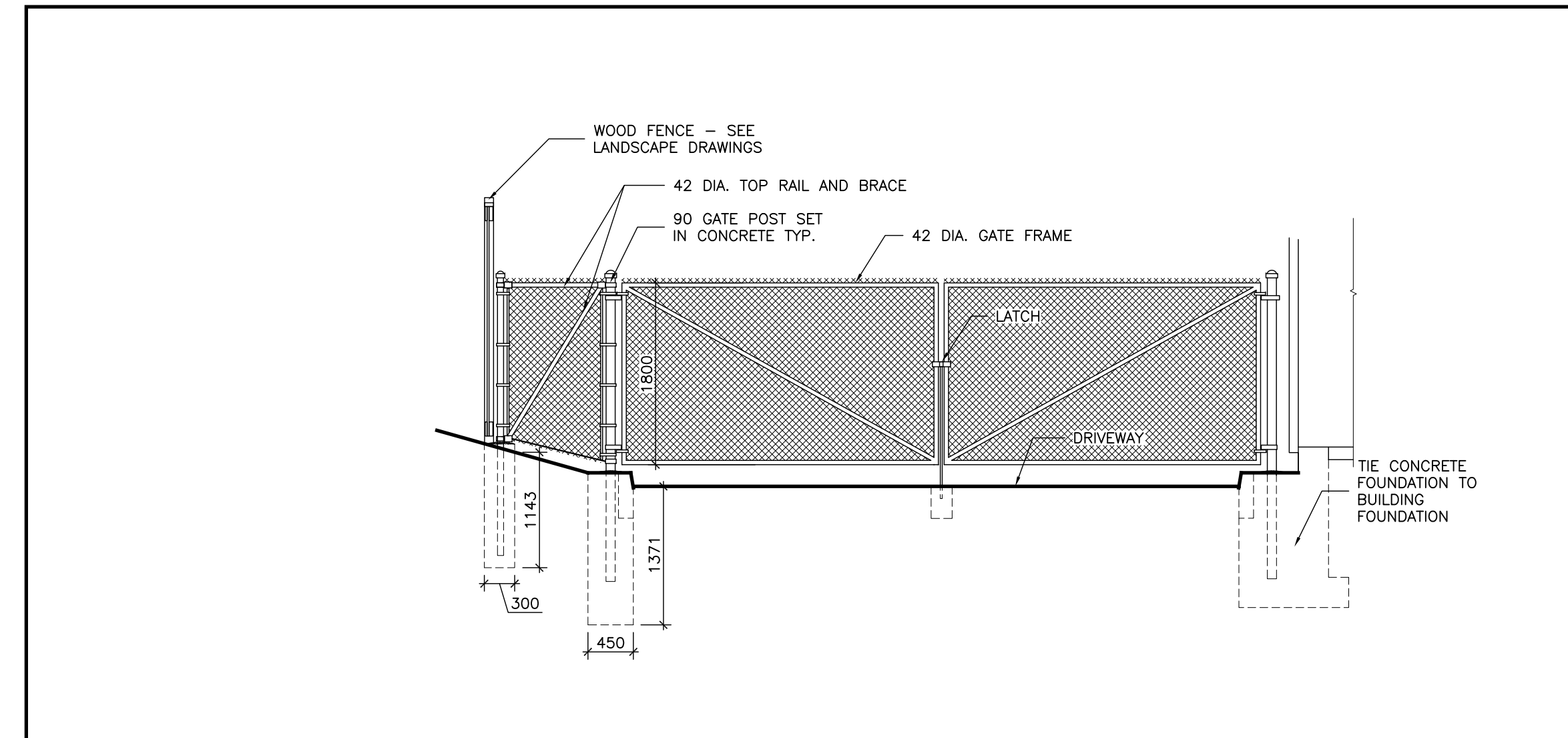
1	ISSUED FOR SPA - 1	2015-06-10
2	ISSUED FOR SPA - 2	2015-08-14
3	ISSUED FOR BUILDING PERMIT	2016-03-02
4	ISSUED FOR TENDER	2016-05-05
5	ISSUED FOR CONSTRUCTION	2016-06-22
NO.	REVISIONS	DATE

- NOTES:
- ROCKWALL PANEL - SEE A-102.
 - BRICK - TO BE DETERMINED.
 - CURTAIN WALL:
 - CURTAIN WALL SECTION TO HAVE ASSEMBLY U-VALUE OF 1.987 MAXIMUM.
 - ALUMINUM COLOUR: ANODIZED
 - GLAZING:
 - TEMPERED GLASS
 - SHGC 0.40
 - U-T 0.70
 - SEALED UNIT: LOW E, CLEAR & CLEAR, SOLARBAN 60 BY PPG
 - CANOPY:
 - ROOF PROFILE: TRADITION 100 WITH I-STYLE RIBS SNAP CAP BY VICWEST OR EQUAL, C/W THERMALLY RESPONSIVE CLIP SYSTEM AND ALL REQUIRED ACCESSORIES, PREFINISHED WITH METALLIC SERIES COLOUR BRIGHT SILVER #2624.
 - UNDERLAYMENT: LASTOBOND BY SOPREMA OR ICE AND WATER SHIELD BY W.R. GRACE.
 - SOFFIT: AD300 BY VICWEST OR EQUAL, PREFINISHED WITH WEATHERK OR 10,000 SERIES COLOUR BRIGHT SILVER #2624.
 - SNOW GUARD:
 - DESIGN SNOW RETENTION SYSTEM TO SUIT BUILDING AND MEET CURRENT CODES. PROVIDE SHOP DRAWINGS STAMPED BY PROFESSIONAL ENGINEER PRACTICING IN ONTARIO QUALIFIED IN THE DESIGN OF SNOW RETENTION AND ITS APPLICATION AND SAFETY REQUIREMENTS.
 - S-51 COLOURGARD SYSTEM BY SKY PRODUCTS LTD. OR APPROVED EQUAL. SNOW GUARD SYSTEM TO BE COMPLETE WITH S-51 HEAVY DUTY CLAMPS, UNPUNCHED CROSSMEMBER, VERSACLIP, ICE CLIP, AND STAINLESS STEEL HARDWARE AS RECOMMENDED BY THE MANUFACTURER.
 - COLOR STRIP - 2" (50.8mm) FROM MANUFACTURER OF THE ROOFING MATERIAL. COLOUR BRIGHT SILVER #2624. REFER TO SNOW GUARD MANUFACTURER FOR COLOR STRIP REQUIREMENTS.
 - PREFINISHED METAL FLASHING, RWL & GUTTER:
 - ROCKWALL PANEL - COLOUR TO MATCH ROCKWALL PANEL
 - BRICK - COLOUR TO MATCH BRICK
 - CANOPY - BRIGHT SILVER #2624
 - DESIGN METAL ROOF, EAVESTROUGHS, GUTTERS & SNOW GUARDS TO ACCOMMODATE THERMAL EXPANSIONS.

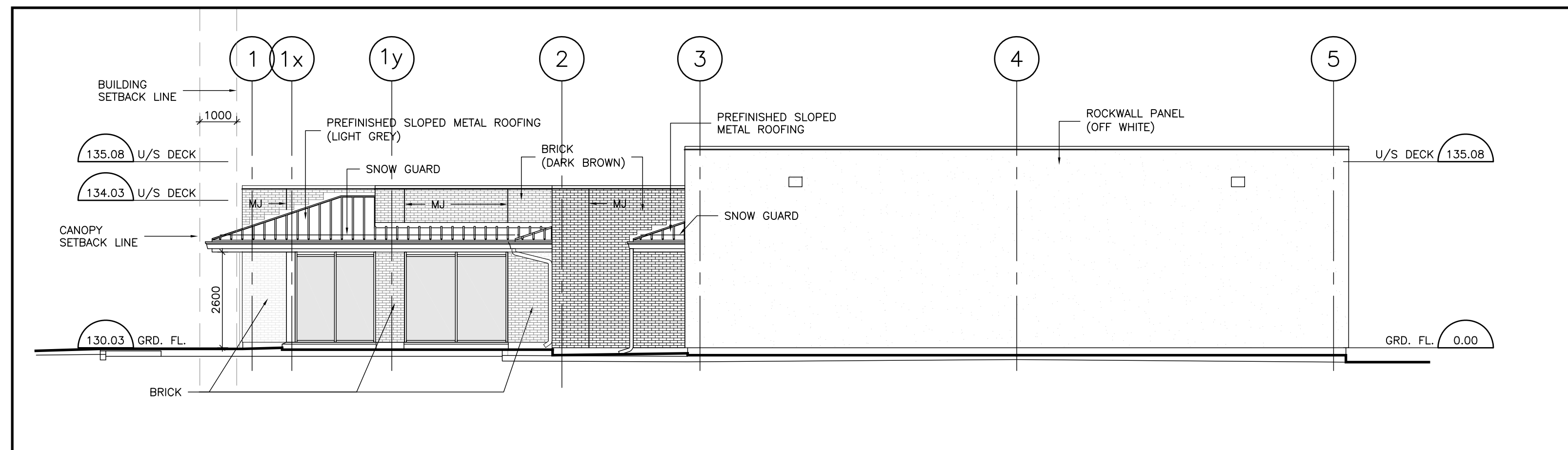
	Thickness	Provided		Required	
		RSI	U-Value	RSI	Max. U-Value
Roof Assembly					
Outside Air Film		0.03			
Roofing Membrane		0.06			
Protection Board (15mm fiberboard)	15 mm	0.0671			
Continuous Insulation - Polyisocyanurate		5.28		5.28ci	
Vapour Barrier					
Metal Deck		0.001			
Interior Air Film		0.11			
		5.5481	0.180		0.181
Office Wall Assembly - Masonry					
Outside Air Film		0.03			
Brick	90 mm	0.063			
Air Space	25 mm	0.18			
Continuous Insulation (spray foam)	90 mm	2.86		2.28+1.76ci	
Concrete Block	22 mm	0.003542			
Purring Channel	13 mm	0.0793			
Gypsum board		0.12			
Interior Air Film		0.11			
		3.323942	0.308		0.312
Warehouse Wall Assembly - Rockwall Panel					
Outside Air Film		0.03			
Exterior Steel Panel	0.51 mm	0.00008211			
Concrete Insulation (continuous)	127 mm	3.52		2.28+1.76ci	
Interior Steel Panel	0.51 mm	0.00008211			
Interior Air Film		0.12			
		3.670018422	0.272		0.312
Slab on Grade					
Concrete Slab	150 mm	0.06		2.64 for 600mm	
Perimeter Insulation (600mm)		2.64			
		2.7	0.370		
Doors					
Opaque Doors - Swinging		0.7		0.7	
Opaque Doors - Non-swinging		0.7		0.7	
Doors & Windows					
		Provided		Required	
	SHGC	U-Value		SHGC	U-Value
Penetration - Windows	0.4	1.987		0.4	1.987
Penetration - Entrance Door	0.4	1.987		0.4	1.987



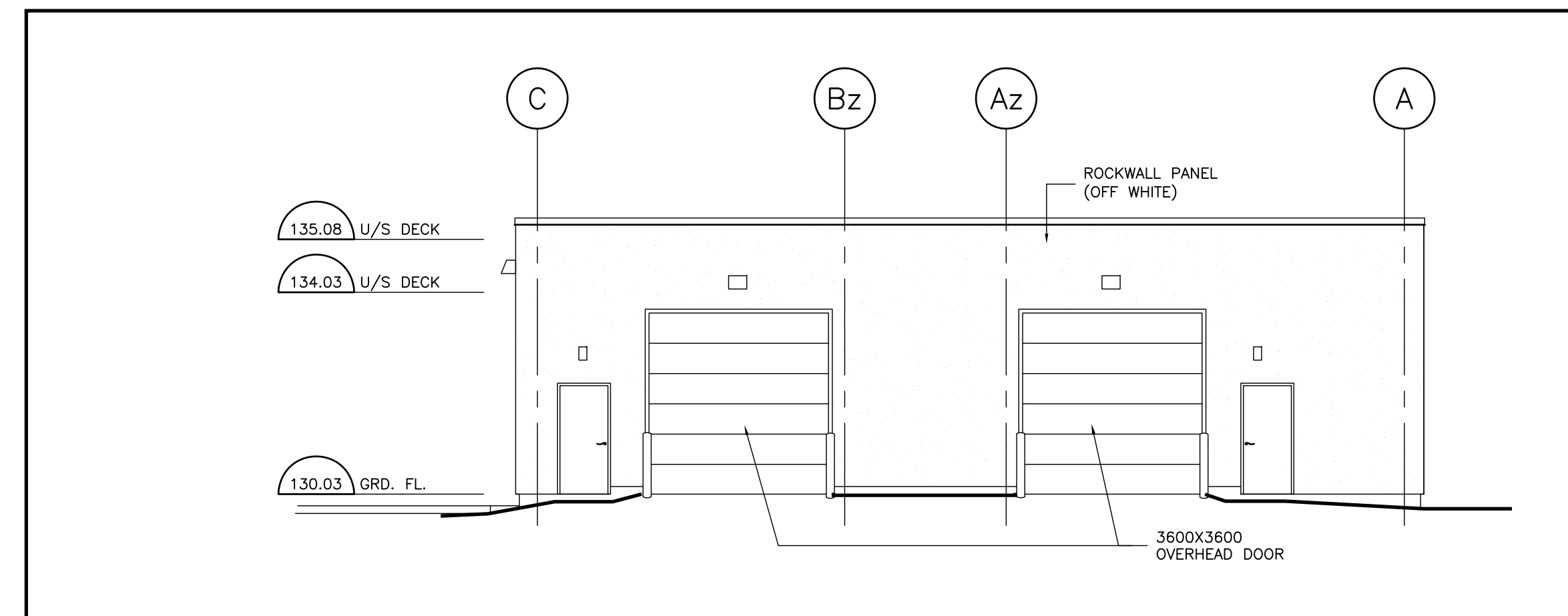
5 BICYCLE RACK
1:20



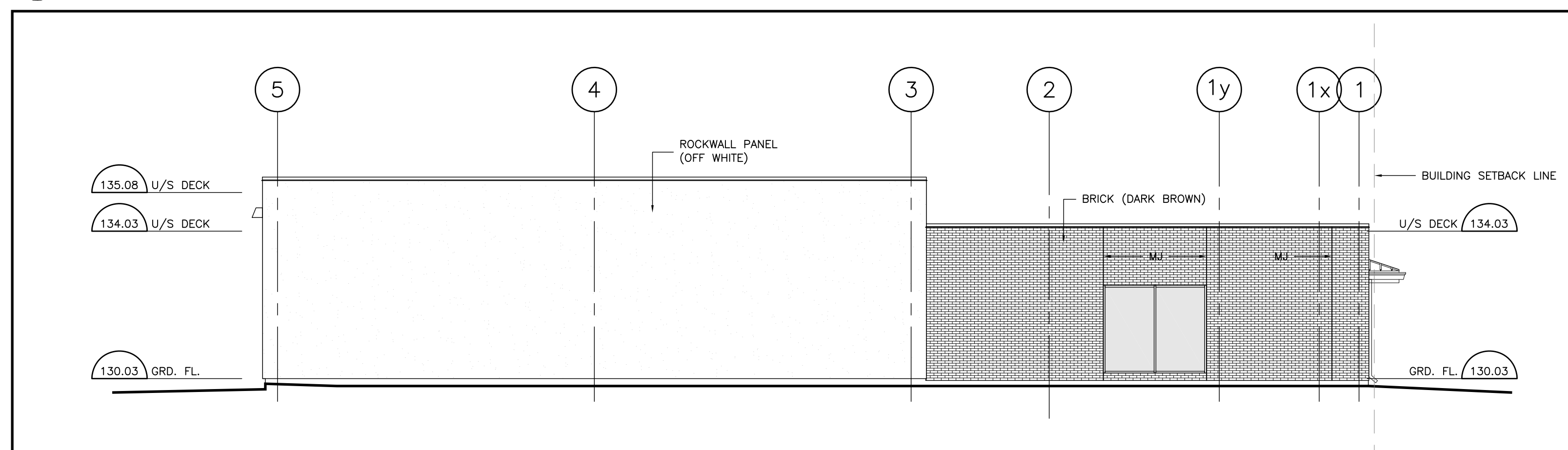
6 CHAIN LINK GATE
1:50



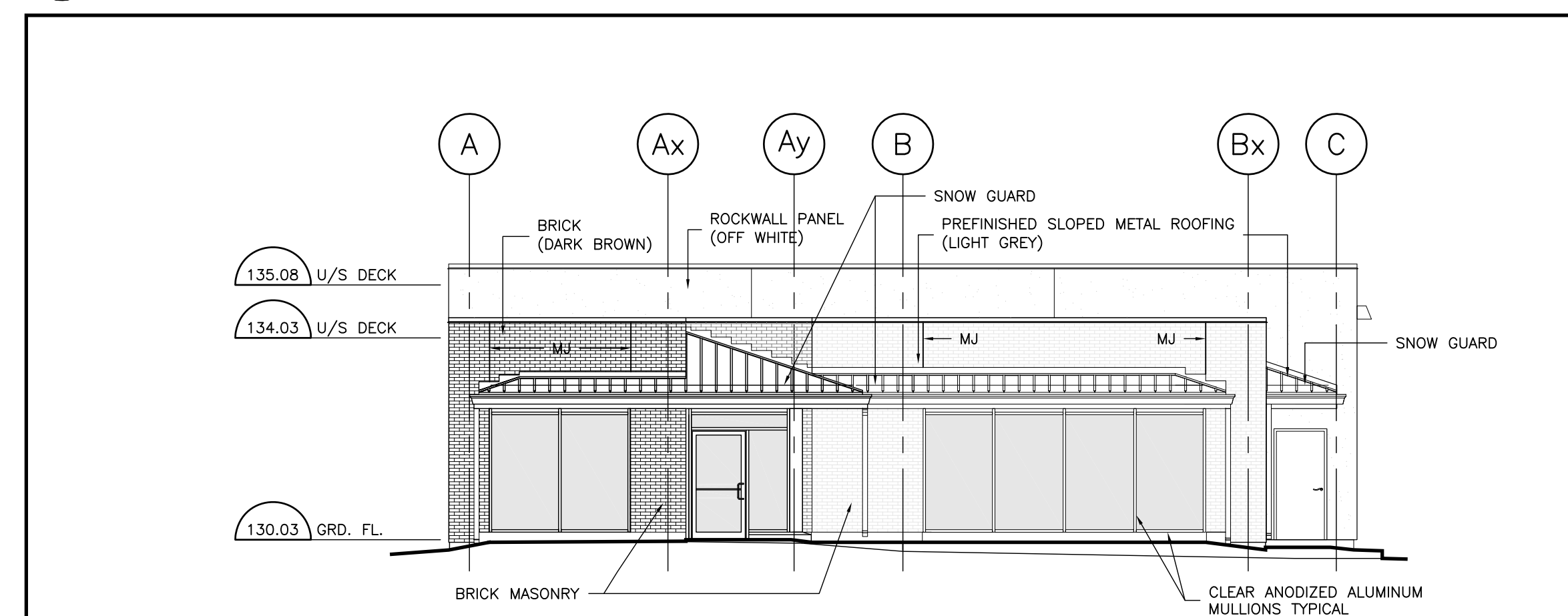
3 WEST ELEVATION
1:100



4 SOUTH ELEVATION
1:100



1 EAST ELEVATION
1:100



2 NORTH ELEVATION
1:100

Owner
S. ACTON HOLDINGS LTD.
905 338 9253

Drawing Title
ELEVATIONS & DETAILS

Project Title
NEW WAREHOUSE

1340 HEINE COURT BURLINGTON



Donald J. Caunter
Architect Limited

40 St. Clair Ave. East, Suite 302, Toronto, ON M4T 1M9 (416) 922-2040

Approved	DC	Checked	DC	Drawn By	WT
Scale	AS NOTED	Date	2015-03-16	File No.	116903
Drawing Number	A-201			Revision Number	